



## CALIFORNIA TRENDS IN STUDENT AID

2006 Report

California Student Aid Commission  
P.O. Box 419026  
Rancho Cordova, CA 95741-9026  
916.526.7590  
Toll free 888.CA.GRANT (888.224.7268)  
[www.csac.ca.gov](http://www.csac.ca.gov)

EdFUND  
P.O. Box 419045  
Rancho Cordova, CA 95741-9045  
Toll free 888.223.3357  
[www.edfund.org](http://www.edfund.org)

The California Student Aid Commission is the state's principal provider of intersegmental statewide grant aid to postsecondary students. Founded in 1955 as the California State Scholarship Commission, the Commission's primary programmatic responsibilities include operation of the Cal Grant program, which is distributing nearly \$800 million to California's college students during the 2005-2006 school year; operation of the California Chafee Grant Program; and several multi-million dollar targeted state scholarship and forgiveness programs. The 15-member Commission oversees the activities of its nonprofit student loan services auxiliary, EdFUND. The Commission is headquartered in Rancho Cordova, California.

EdFUND, a nonprofit public benefit corporation, is the nation's second largest provider of student loan guarantee services under the Federal Family Education Loan Program. EdFUND offers students a wide range of financial aid and debt management information while supporting schools with advanced loan processing solutions and default prevention techniques. Operating as an auxiliary corporation of the California Student Aid Commission, EdFUND processes more than \$7.8 billion in student loans annually (including consolidation loans) and manages a portfolio of outstanding loans valued at \$26 billion. EdFUND is headquartered in Rancho Cordova, California with regional offices located throughout the nation.

Contents copyright © EdFUND 2006. All rights reserved. EdFUND and its associated graphic are registered trademarks of EdFUND. All other trademarks are the property of their respective owners.

California Student Aid Commission and its associated graphic are the service mark of the California Student Aid Commission.

---

# **CALIFORNIA TRENDS**

## **IN STUDENT AID**

### **1994-95 to 2003-04**

---

**A Research Report Sponsored by the  
California Student Aid Commission and EDFUND**

**Prepared by**



**Educational Policy Institute**

**March 2006**

**Watson Scott Swail  
Lawrence E. Gladieux**



# TABLE OF CONTENTS

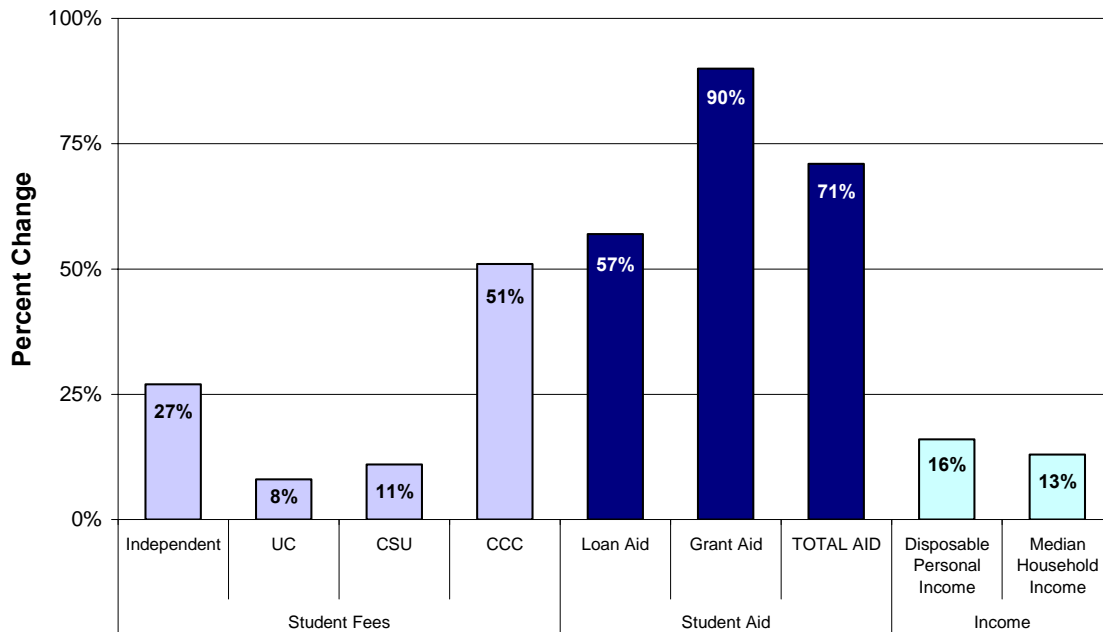
<b>Overview</b> _____	<b>1</b>
<b>Part I. Enrollments, Fees, Costs of Attendance and Ability to Pay</b> _____	<b>3</b>
<b>Part II. Student Aid in California</b> _____	<b>6</b>
<b>Part III. Student Aid by Sector</b> _____	<b>9</b>
<b>Methodology and Limitations</b> _____	<b>15</b>
<b>Tables</b> _____	<b>17</b>
<b>Appendix A. Percentage Tables</b> _____	<b>42</b>
<b>Appendix B. Federal Loan Limits</b> _____	<b>52</b>
<b>Notes and Sources</b> _____	<b>53</b>



## OVERVIEW

After coasting downward in the mid-1990s, fees to attend California's public colleges rose steeply in the early 2000s. During the same period, financial aid increased at a fast clip and median family income grew modestly – both outpacing the rate of growth in fees to attend public four-year institutions (see Exhibit 1). Nonetheless, when these and other statistics are brought together in the focused context of higher education affordability, the overall picture shows that college costs rise and fall with the state's economic health but inexorably increase over time. This takes an ever larger bite of household income and puts enormous pressure on aspiring college attendees and their families.

**Exhibit 1. Percent Change in Tuition/Fee Charges, Student Aid and Income, 1994-95 to 2003-04 (Constant Dollars)**



Based on Tables 1 and 2a

While rising costs are a higher education story common throughout the nation, it is particularly evident in California, which long has had a reputation for providing high-quality education at comparatively low costs in three levels of public institutions: the four-year University of California and California State University systems and the two-year California Community Colleges. Even after the sharp fee increases of the past few years, California's public institutions remain a bargain compared to the national average – but that may be little solace to the state's students as they struggle to pay costs that are 20 to 30 percent of the state's median annual household income.

To help students meet the rising costs, policy-makers at both the state and federal levels of government, and at the institutions as well, have increased financial aid resources repeatedly. During 2003-04,

California's students received \$9 billion in aid, an increase of 12 percent over the previous year and 71 percent over a 10-year period. However, since half of that aid came in the form of loans, with a volume that has increased 59 percent over the past decade, there continues to be a cost barrier for students and families who are ineligible or culturally reluctant to assume debt. There is also an increasing burden of repayment for graduates who enter low-paying careers.

The total scope of financial aid in California – what it is composed of, who provides it and where it is distributed – is the focus of this report. *California Trends in Student Aid, 1994-95 to 2003-04* is the latest in a series of reports that track data on financial aid, as well as undergraduate tuition and fees, the cost of college attendance and family incomes. The series places annual changes in historical perspective by showing the patterns of change over 10-year periods (adjusted for inflation); each new report provides an additional two years' worth of data. The California Student Aid Commission and EDFUND jointly issue the reports to assist policy makers as they consider options and priorities for state spending. This latest analysis was conducted by the Educational Policy Institute under contract to EDFUND.

The following narrative sections of the report provide an examination of many of the components that go into determining the affordability – and, therefore, the accessibility – of higher education in California during the decade bridging the mid-1990s and mid-2000s. In addition, this report includes extensive tables of detailed data that are the foundation for the analysis and exhibits provided in the narrative (relevant tables are noted throughout).

## PART I. ENROLLMENTS, FEES, COSTS OF ATTENDANCE AND ABILITY TO PAY

**Enrollments.** During the 10-year period covered by this report, enrollment grew by approximately one-third at California state public institutions (Table 7). Full-time equivalent enrollment at the University of California grew 33 percent to 201,896, compared to 34 percent for California State University (331,705) and 29 percent at California Community Colleges (1,105,212).

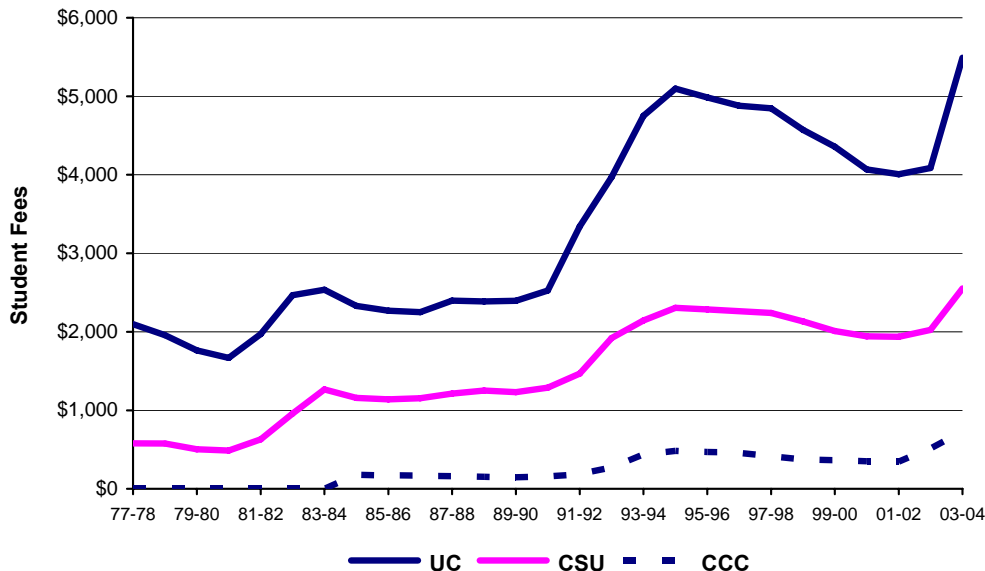
**Student Fee Charges.** In 2003-04, annual in-state fees within the three public sectors in California increased substantially over the previous year (Table 1):

- Total annual fees at the University of California were \$5,490 in 2003-04, up 37 percent from the previous year.
- Fees for the California State University system rose 29 percent to \$2,552.
- The fees for a full-time course load at the California Community Colleges rose 44 percent to \$728.

Comparatively, tuition at independent institutions increased a modest 6 percent to \$22,841.

Sharp fee hikes at public institutions during a recession and state budget crisis appear to be a replay of the response to similar economic conditions in the early 1990s. As Exhibit 2 indicates, fees rose significantly during that time and then receded a few years later – although not to pre-recession amounts – when the state’s economy improved and budget constraints eased.

**Exhibit 2. Annual Undergraduate Student Fees for Public Institutions, 1977-78 to 2003-04 (Constant Dollars)**



Based on Table 1

A similar roller-coaster effect may now be under way; fee increases were steep for 2003-04 and continued to increase in the following two years (which are not included in this report because of the lag time in collecting complete data). However, as this report is being written early in the 2006 state election year, policy-makers and political aspirants have begun to talk about the need to reduce higher education fees.

Between 1994-95 and 2003-04, fees rose in the three public sectors at rates of 8 percent (University of California) and 11 percent (California State University). The 51 percent increase at California Community Colleges, although a much larger figure, reflects a relatively modest change in dollar cost (Table 1).

As Exhibit 3 indicates, the California fee increases compare with national average increases of 39 percent for four-year public institutions and 18 percent for two-year public institutions (College Board, 2004). For the independent sector, national average increases were 31 percent over the decade, compared with 27 percent in California. Overall, California higher education fees remained below national averages at the four-year California State University system and the two-year California Community Colleges, and the gap between the national average and the higher-priced University of California narrowed substantially.

**Exhibit 3. Tuition/Fee Comparison between National and California Sectors, 1994-95 and 2003-04 (Constant Dollars)**

Sector	1994-95	2003-04	Dollar Change	Percent Change
<b>Public Four-Year</b>				
National average	\$3,347	\$4,645	\$1,298	39%
UC	\$5,097	\$5,490	\$393	8%
CSU	\$2,305	\$2,552	\$247	11%
<b>Public Two-Year</b>				
National average	\$1,621	\$1,909	\$288	18%
CCC	\$483	\$728	\$245	51%
<b>Private Four-Year</b>				
National average	\$14,499	\$18,950	\$4,451	31%
ICU	\$17,935	\$22,841	\$4,906	27%

**Cost of Attendance.** Total cost of attendance includes both tuition and fees and all the other costs associated with attending college – room and board, books, supplies and transportation. Table 1 displays the full costs of living on campus, which may reflect higher expenses than most students pay since most public sector students live off-campus. Nonetheless, living costs have risen considerably during the decade, even exceeding the rate of increase in student fees for the public sector. For instance, over the course of the decade, non-fee related costs increased from \$7,355 to \$9,689 (32 percent) at the University of California and from \$6,533 to \$7,881 (21 percent) for the California State University system. At independent institutions, the non-tuition costs remained relatively level.

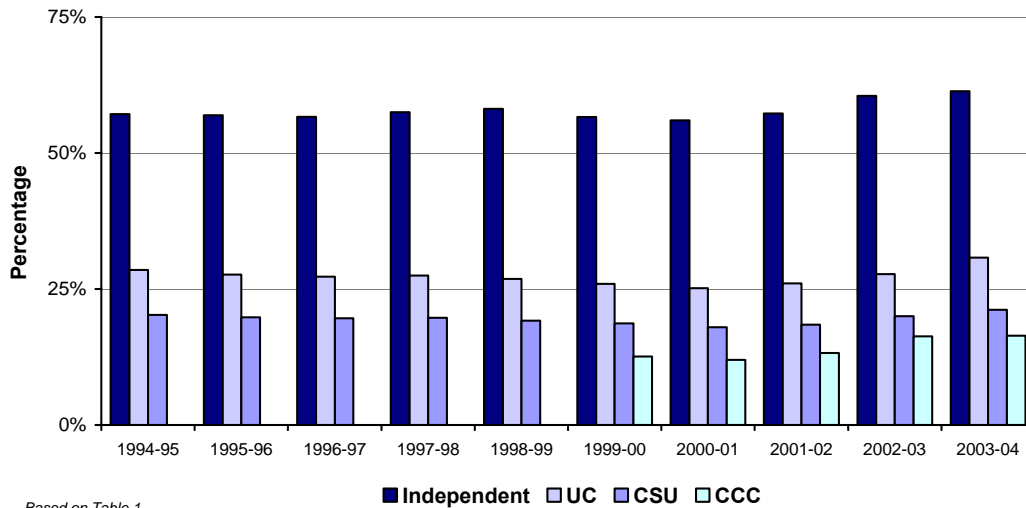
**Family Cost Burden.** To compare higher education affordability in California over time, the relationship between the cost of attendance and

the median household income can be used as an approximate measure of the level of effort that individuals and families must make in order to attend college. Over the course of the decade ending in 2003-04, median household income rose 13 percent. This is more than fee increases at the state's four-year public institutions, but significantly less than the approximately 20 percent increase in costs of attendance at the University of California, the California State University system, and independent institutions (Table 1).

The ratio of cost of attendance to median household income differs for each public sector. It rose three percentage points to 31 percent at the University of California. Thus, the cost of attendance at the University of California equals almost one-third of the median household income of California families (not taking into account any financial aid available at that level of income). The ratio of cost of attendance to median household income for the California State University system is 21 percent; it is 16 percent at the California Community Colleges and 61 percent at independent institutions.

As Exhibit 4 indicates, the share of median household income required to attend college rose at the end of the decade, despite increases in both household and personal income. These increases were not enough to offset rising college costs.

**Exhibit 4. Cost of Attendance as a Share of California Median Household Income by Sector, 1994-95 to 2003-04**



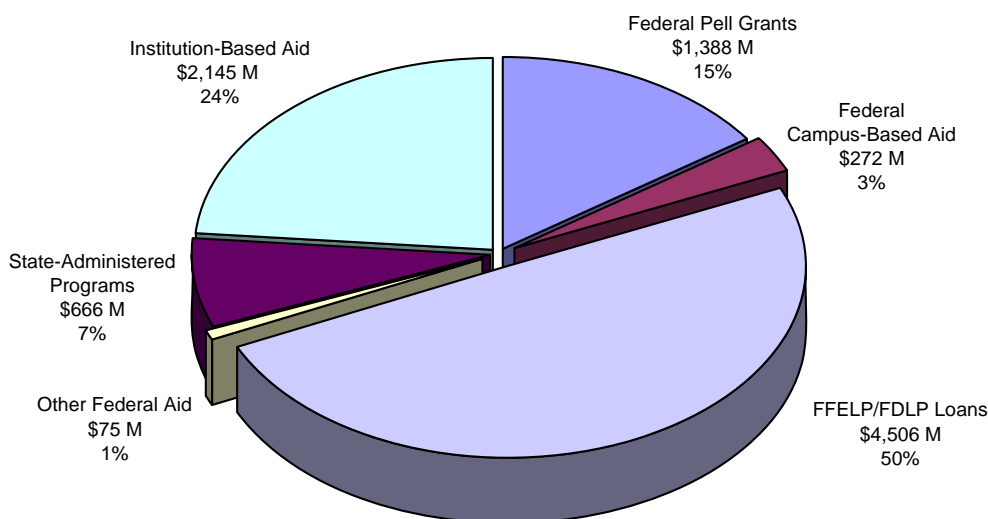
Based on Table 1

Note: Data on cost of attendance at California Community Colleges before 1999-00 were not collected.

## PART II. STUDENT AID IN CALIFORNIA

More than \$9 billion in student aid was distributed in California in 2003-04, an increase of 12 percent over the prior academic year and a decade-long increase of 71 percent (inflation-adjusted). As Exhibit 5 illustrates, federal student aid comprised 69 percent (\$6.2 billion) of all aid in the state, institutional aid 24 percent (\$2.1 billion) and state aid 7 percent (\$666 million). Of all federally provided student aid, 73 percent was in the form of repayable loans, 25 percent grant aid and the remainder was in work-study funds (Table 2).

**Exhibit 5. California Student Aid by Source  
2003-04 (\$9.0 Billion Awarded)**



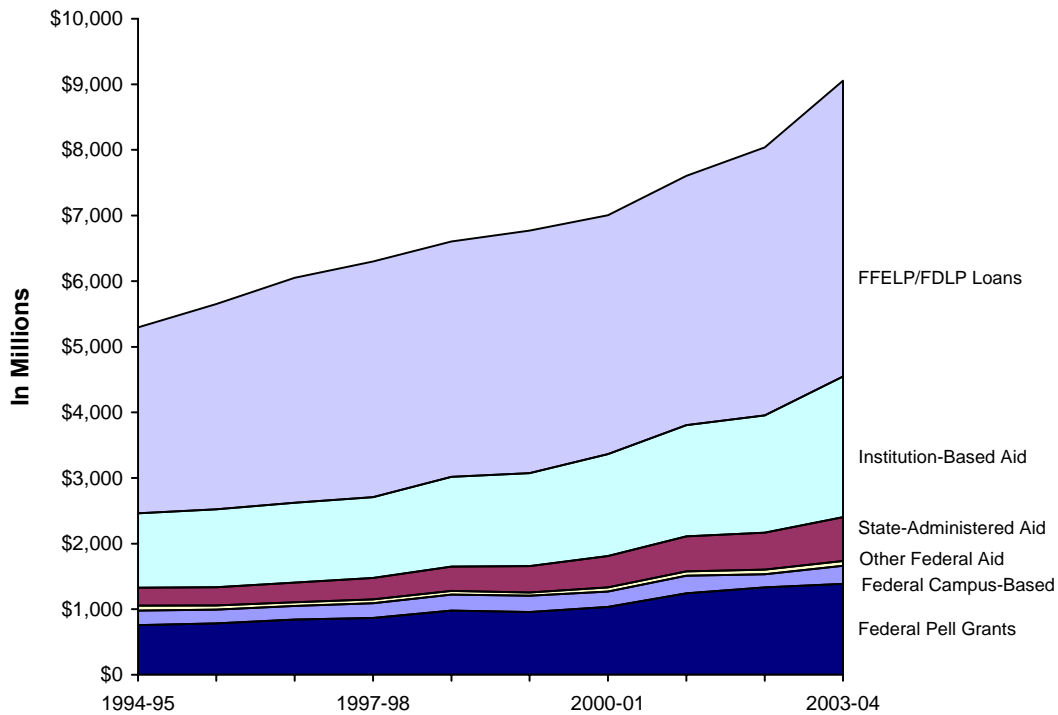
Based on Table 2

Exhibit 6 on the next page displays the growth in all types of student financial aid in California during the decade.

**Federal Aid.** The Federal Family Education Loan Program (FFELP) and the Federal Direct Loan Program (FDLP) comprise the largest sources of federal student aid, providing \$4.5 billion in loans to students and parents in 2003-04, equivalent to 72 percent of all California-based federal aid and 50 percent of all student aid in California. This program expanded by 10 percent over 2002-03, fueled by the Parent Loans for Undergraduate Students program (PLUS), which increased 34 percent in one year to \$678 million. Subsidized Stafford loans (loans for which the federal government pays interest accrued during school) account for 45 percent of all federal loans and totaled \$2 billion in 2003-04. Unsubsidized Stafford loans now account for 39 percent, or \$1.8 billion, of all federal student loans, up from 31 percent in 1994-95 (Table 2a; Exhibit 6).

The Pell Grant, the nation's largest grant program, as well as the largest grant program in California, provided \$1.4 billion in aid to California students during the 2003-04 academic year. This represents an increase of 4 percent over 2002-03 and a cumulative increase of 83 percent since 1994-95.

**Exhibit 6. Statewide Trends in Aid  
1994-95 to 2003-04 (Constant Dollars)**



Based on Table 2a

Federal campus-based programs, which include the Supplemental Educational Opportunity Grant (SEOG), the Federal Work-Study Program, and the Perkins Loan Program, accounted for \$272 million in funds, or 3 percent of all federal aid in the state. The Work-Study Program is the largest of these programs with \$116 million, followed by SEOG with \$87 million and Perkins with \$69 million. Together, these programs increased 23 percent above inflation during the decade beginning in 1994-95.

**State Aid.** State aid totaling \$666 million in 2003-04 was distributed to students almost exclusively through the Cal Grant programs. This represents an increase of 19 percent over academic year 2002-03 and a 141 percent increase since 1994-95. With the exception of 2002-03, the last four years have brought large-scale increases in state aid through the Cal Grant Entitlement program. In the last three years alone, the program grew by 50 percent. The growth stems from legislation in 2000 that established the Cal Grant program as a grant guarantee for California high school graduates who meet income and grade criteria.

The Cal Grant program consists of four subprograms. Cal Grant A provides aid to first-time undergraduate students for mandatory fees at four-year institutions, with eligibility determined in part by grade point average (GPA) and financial need.<sup>1</sup> Cal Grant B further targets lower-income undergraduate students, providing funds for living costs the first year and living costs plus fees in later years. Cal Grant C targets

<sup>1</sup> Transfer students attending two-year institutions can receive a Cal Grant A, but the funds are deferred until they enter a four-year institution.

vocational students and Cal Grant T helps undergraduates in teacher credential programs. (In 2003-04, the California Legislature cancelled funding for Cal Grant T due to budget considerations. The program remained unfunded through the publication of this report.)

The main focus of the entitlement legislation was the Cal Grant B program, which provided \$362 million in funds to undergraduate students in 2003-04, an increase of 33 percent from 2002-03 and an increase of 324 percent since 1994-95. The total inflation-adjusted increase over the decade for the Cal Grant A program was 48 percent (Table 2).

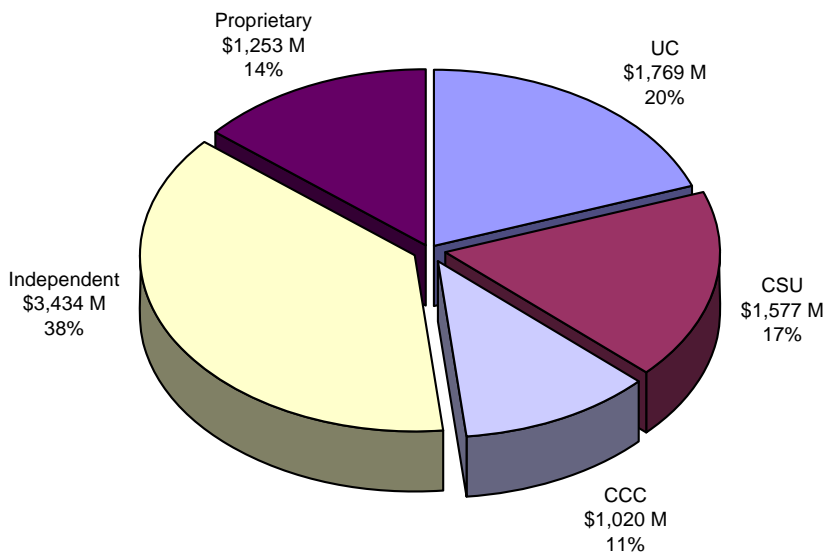
The Cal Grant C and T programs are specialized programs and, therefore, do not distribute nearly the same volume of aid as Cal Grant programs A and B.

**Institutional Aid.** After the federal government, institutions are the second largest provider of student aid in the state. In 2003-04, institution-sponsored aid reached \$2.1 billion, an increase of 20 percent over 2002-03 and a decade-long increase of 89 percent. This aid was split almost evenly between public and private institutions. Over the decade, institutional aid at private institutions doubled after controlling for inflation, while public institutions increased their aid by 85 percent.

## PART III. STUDENT AID BY SECTOR

As illustrated in Exhibit 7, students attending independent institutions received the most aid in the state, totaling \$3.4 billion and representing 38 percent of all student aid in California. Students attending proprietary institutions received \$1.3 billion in aid (14 percent). The remainder of aid (\$4.4 billion; 48 percent) was funneled to students attending public institutions. Students attending the University of California received \$1.8 billion aid (20 percent), while those attending California State University received \$1.6 billion (17 percent). California Community College students received \$1 billion (11 percent). On average, total aid increased by 71 percent between 1994-95 and 2003-04. Public institutions saw their total aid jump by approximately 73 percent during that period, compared to 60 percent for independent institutions and 100 percent for the proprietary sector.

**Exhibit 7. Distribution of Student Aid by Sector  
2003-04**

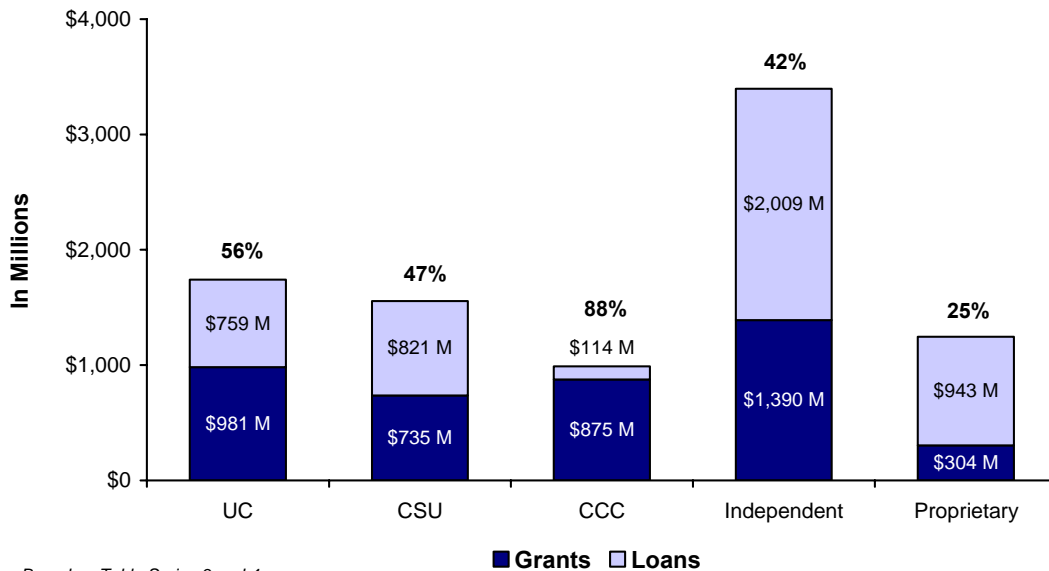


Based on Table 5

**Grants vs. Loans.** Exhibit 8 on the next page provides a breakdown of the grant versus loan distribution by sector. As illustrated, students attending independent institutions receive a greater volume of grant and loan-based aid than any other sector, but not the highest ratio of grants versus loans. That distinction goes to California Community Colleges, where 88 percent of all aid is in the form of grants. Fifty-six percent of aid at the University of California is grants, and the California State University provides 47 percent of its aid in grants. Only 25 percent of aid at proprietary institutions is in grants.

**Pell Grants.** Of the \$1.4 billion in federal Pell Grants distributed in California in 2003-04, 75 percent was granted to students attending a public institution. In fact, students attending California Community Colleges accounted for the largest portion of Pell Grants (\$566 million; 41 percent). California State University had the second highest Pell

**Exhibit 8. Grant Versus Loan Ratio for California Sectors 2003-04, With Percentage of Grants**



Based on Table Series 3 and 4

Grant volume (\$321 million; 23 percent), followed by the proprietary sector (\$229 million; 17 percent), the University of California (\$149 million; 11 percent), and the independent institutions (\$123 million; 9 percent).

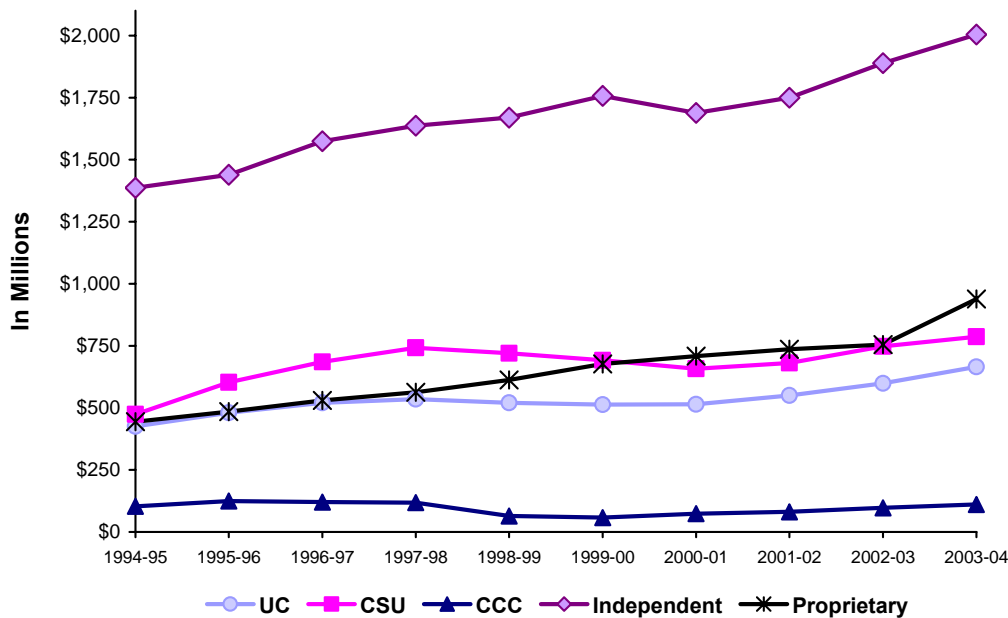
Between 1994-95 and 2003-04, total Pell Grant volume grew 83 percent (inflation adjusted). Public institutions all realized growth around the 90 percent mark, while independent institutions experienced Pell Grant volume growth of 62 percent. Proprietary institutions rose 53 percent. The distribution of Pell Grant funds between sectors stayed largely the same over the past decade.

**Federal Guaranteed Loans.** Total loan volume (Stafford and PLUS) in California reached \$4.5 billion in 2003-04, almost half of which was loaned to students attending independent institutions (\$2 billion; 44 percent). The proprietary sector had the second highest federal loan volume with \$939 million (21 percent), followed by California State University (\$787 million; 17 percent), the University of California (\$665 million; 15 percent) and California Community Colleges (\$111 million; 2 percent).

Exhibit 9 on the next page illustrates the consistent growth in federal loans over the decade, with inflation-adjusted increases of 59 percent between 1994-95 and 2003-04. Growth was similar for the public sector, with the exception of relatively flat growth for California Community Colleges. Proprietary schools had the highest rate of growth over the course of the decade (111 percent).

Subsidized loans grew by 18 percent over inflation between 1994-95 and 2003-04. The University of California posted subsidized growth of 10 percent and the California State University system 25 percent, but California Community Colleges dropped by 12 percent. Independent institutions posted 9 percent growth in subsidized loans over the decade,

**Exhibit 9. FFELP/FDLP Loan Volume  
1994-95 to 2003-04 (Constant Dollars)**



Based on Table Series 3a and 4a

but proprietary institutions grew by 53 percent, by far the largest percentage growth of the five sectors. Subsidized loan growth was the slowest of any of the federal loan programs. This is due to a combination of the severe Stafford loan limits, which have not been increased since 1998, and the means-tested eligibility for this program.

The unsubsidized Stafford program essentially doubled (96 percent) between 1994-95 and 2003-04 to \$1.8 billion in California. Independent schools had the greatest share of unsubsidized Stafford volume in 2003-04 with \$952 million, followed by proprietary institutions (\$353 million), California State University (\$253 million), the University of California (\$195 million) and California Community Colleges (\$35 million). The greatest percentage growth was at California State University schools, which increased 190 percent over the decade. University of California schools realized an increase of 116 percent, and proprietary schools rose 112 percent.

Finally, the PLUS program had enormous growth over the decade, posting a 260 percent increase to \$678 million. The PLUS program allows parents to borrow for their child's undergraduate education. This program has probably grown in part due to the stagnation in Stafford loan limits at a time of rising tuition, opening an increasingly wider gap between what students may borrow under federal programs and the resources that they need to go to the school of their choice.

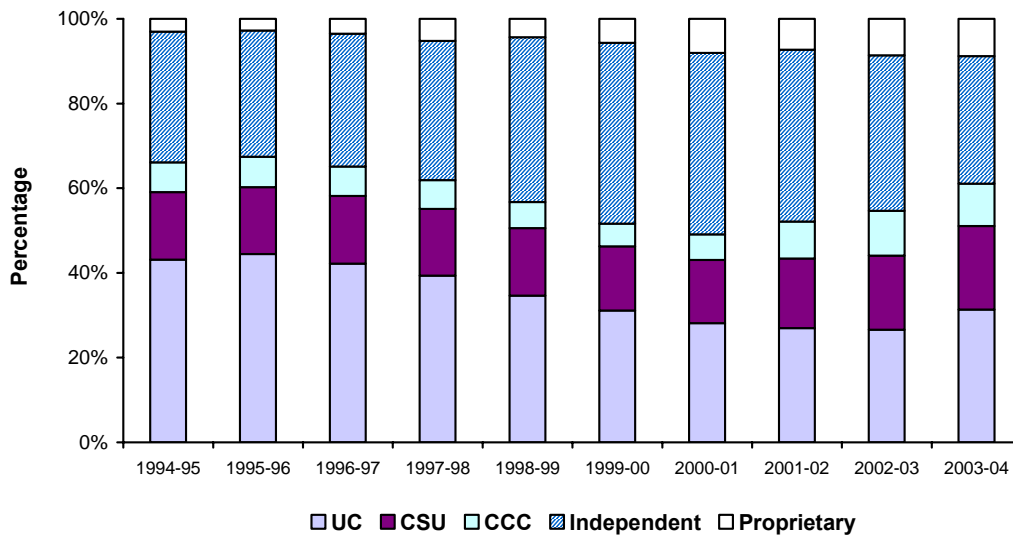
The greatest sector of PLUS growth was for parents of students enrolled in the California State University system, where borrowing increased 501 percent over the decade, although volume was moderate (\$61 million). Since 2000, students attending proprietary schools began to borrow significant PLUS loan dollars, bringing volume to \$238 million, an increase of 376 percent over the decade. Independent schools posted a

similar total (\$240 million), but realized a relatively slower growth of 158 percent. University of California parents borrowed \$138 million in PLUS loans, an increase of 296 percent over the decade.

**Cal Grants.** As described in Part II, the Cal Grant program is California's main student aid program, providing more than \$643 million in grants in 2003-04. Sixty-one percent of Cal Grant funds went to students at public institutions, totaling \$392 million. Overall, 31 percent of Cal Grant funds totaling \$202 million went to students attending University of California schools in 2003-04, compared to 20 percent for California State University students (\$127 million) and 10 percent for California Community Colleges students (\$64 million).

As Exhibit 10 indicates, independent institutions increased their share of Cal Grants over the late 1990s and into the early 2000s, but the trend turned back toward public institutions in 2001-02. This was partly due to the state reworking the Cal Grant Program in 2000 to become the Cal Grant Entitlement Program.

**Exhibit 10. Cal Grant Distribution by Sector  
1994-95 to 2003-04**



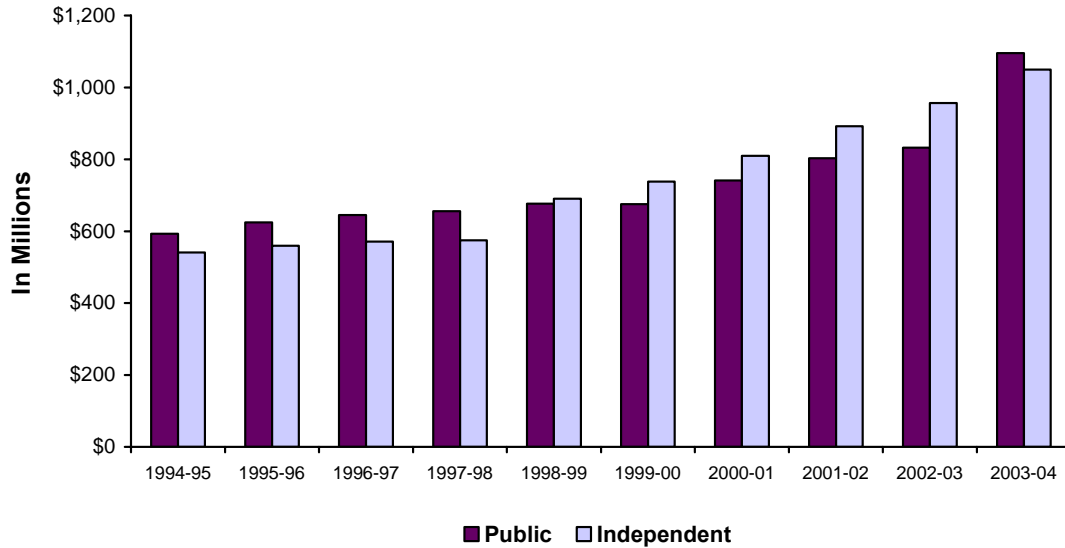
Based on Table 5b

**Institutional Aid.** Institutional aid is an increasingly important piece of the student aid pie, especially at independent institutions but also at public institutions. As can be seen in Exhibit 11 on the next page, institutional aid increased at greater rates in the 2000s than in the 1990s. This may be due in part to the recession, demanding more support from the institution to allow the enrollment of needy students. Given that almost one quarter of all student aid in the state comes from institutions, this is a significant support mechanism for students.

Half of all institutional aid comes from the independent sector, representing \$1 billion of the total \$2.1 billion in institutional funds available to students in 2003-04. Of the remaining \$1.1 billion, half goes to students attending University of California institutions (\$590 million), and the rest to California State University (\$290 million) and California

Community Colleges (\$215 million). Both University of California and independent schools saw their institutional aid volume grow by approximately 90 percent between 1994-95 and 2003-04. At the public sector in general, institutional aid increased 32 percent in 2003-04 from the previous year.

**Exhibit 11. Public and Independent Institution-Based Aid  
1994-95 to 2003-04 (Constant Dollars)**

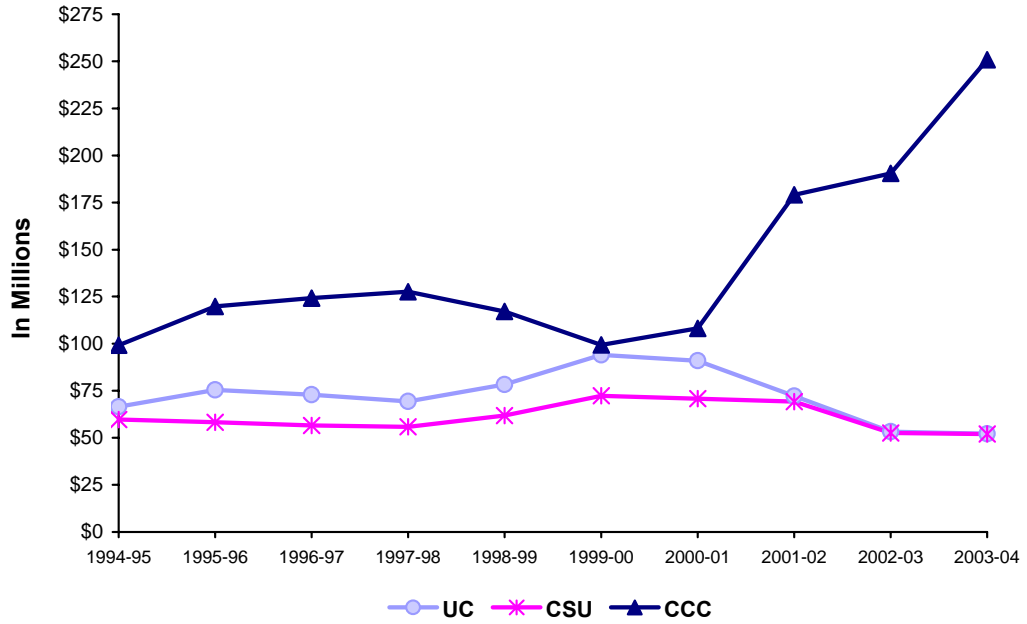


Based on Table 2a

**State General Fund Support.** Since EDFUND's last report in 2001-02, state General Fund expenditures on public institutions have declined due to budget deficits. In real dollars, the University of California received \$3.5 billion in 2001-02 but only \$2.9 billion in 2003-04. This represents a two-year loss of 17 percent. Funds to California Community Colleges dropped 19 percent to \$2.4 billion during the same period. General Fund support for the California State University system decreased 6 percent to \$2.6 billion.

As displayed in Exhibit 12 on the next page, state General Fund support for institution-based aid grew significantly for California Community Colleges since 2000-01, rising to a record \$251 million, an increase of 32 percent over 2002-03 and a 132 percent increase since 2000-01. Over the past decade, the total increase in institutional aid for California Community Colleges was 153 percent. Conversely, both the University of California and California State University realized declines in state support for financial aid. In 1999-00, the University of California and California State University had their highest levels of state General Fund aid (\$94 million and \$72 million, respectively). However, by 2003-04, this support declined to \$52 million for both the University of California and California State University.

**Exhibit 12. State General Fund Support for Institution-Based Aid  
1994-95 to 2003-04 (Constant Dollars)**



Based on Table 8a

## METHODOLOGY AND LIMITATIONS

The model for this data collection is the College Board's *Trends in Student Aid* report, which provides nationwide student aid data and analysis. Both the national and the California statistical series account only for direct financial aid, not the indirect subsidies that make it possible for colleges and universities to charge less than the actual costs of instruction. Thus, this report does not present a complete picture of how students pay for college or how society in general pays for the cost of higher education.

Operating support that comes from state, federal, and local appropriations, as well as private philanthropy, reduces the price faced by students in general. State governments are the largest provider of operating subsidies, but the federal government is by far the largest source of direct student aid. California stands out among the states as one with a relatively large public sector of higher education and somewhat lower-than-average fees.

Other restrictions also apply to the data in this report. For instance, the report does not consistently separate assistance for graduate and undergraduate students, since the available data are not disaggregated this way for many sources and programs. In other cases, reliable, consistent information was not available for all sectors of California postsecondary education. For this reason, the following categories of student aid are not systematically included in this report:

- aid for veterans and from military programs;
- tuition assistance that students may receive from their employers;
- university-provided tuition remission, except for fee waivers under the California Community Colleges Board of Governors program awarded annually since 1993-94;
- tuition tax assistance, such as the federal Hope Scholarship and Lifetime Learning Tax Credits; and
- aid awarded in the form of wages from student employment, other than through formal work-study programs.

Data on student aid in private, for-profit (or proprietary) schools is incomplete. What little is known is that the sources of financing for these schools are much less diverse than for nonprofit institutions. They rely almost exclusively on federal programs, with a small amount of state assistance and apparently little, if any, institutional or private aid.

By contrast, the independent nonprofit sector awards substantial amounts of institutional aid to students. Unfortunately, data on such assistance is not detailed. The estimates in this report for institution-based aid in California's independent, nonprofit colleges and universities remain broad approximations. As institution-based assistance continues to increase as a percent of available aid, the collection of more complete, comparable data on student aid at independent, nonprofit institutions will become increasingly important.

Another limitation of the data collection is the shortage of information on "alternative" loan programs – borrowing for higher education that is not

federally sponsored or guaranteed. The College Board National Trends in Student Aid survey estimated the volume of such residual borrowing at more than \$10 billion in 2003-04. While non-federal loans remain a fraction of the nearly \$60 billion in federal education loan volume, they are clearly on the rise. This estimate of non-federal borrowing is probably conservative, and it does not include credit card debt, conventional consumer loans, and home equity lines of credit that students and parents may use for college financing. Also, there is no breakdown of this national estimate by state and no independent source of data on private borrowing in California.

# TABLES

TABLE 1						
Undergraduate Tuition, Fees, Cost of Attendance and Income of California Residents, In Current and Constant Dollars						
Current Dollars						
Academic Year	Tuition	In-State Fees			Calendar Year	Median Household Income
	ICU	UC	CSU	CCC		
1994-95	\$14,496	\$4,120	\$1,863	\$390	1994	\$35,331
1995-96	\$15,235	\$4,139	\$1,897	\$390	1995	\$37,009
1996-97	\$15,901	\$4,166	\$1,931	\$390	1996	\$38,812
1997-98	\$16,576	\$4,212	\$1,947	\$360	1997	\$39,694
1998-99	\$17,333	\$4,037	\$1,882	\$330	1998	\$40,934
1999-00	\$17,881	\$3,964	\$1,827	\$330	1999	\$43,629
2000-01	\$19,198	\$3,828	\$1,828	\$330	2000	\$46,816
2001-02	\$20,017	\$3,837	\$1,854	\$330	2001	\$47,262
2002-03	\$21,465	\$4,000	\$1,981	\$504	2002	\$47,437
2003-04	\$22,841	\$5,490	\$2,552	\$728	2003	\$49,300
Academic Year	Cost of Attendance				Calendar Year	Disposable Personal Income (Per Capita)
	ICU	UC	CSU	CCC		
1994-95	\$20,180	\$10,064	\$7,143	N/A	1994	\$20,554
1995-96	\$21,072	\$10,234	\$7,324	N/A	1995	\$21,263
1996-97	\$21,985	\$10,575	\$7,619	N/A	1996	\$22,011
1997-98	\$22,833	\$10,905	\$7,817	N/A	1997	\$22,793
1998-99	\$23,789	\$10,995	\$7,862	N/A	1998	\$24,258
1999-00	\$24,694	\$11,323	\$8,151	\$5,490	1999	\$25,087
2000-01	\$26,214	\$11,760	\$8,404	\$5,598	2000	\$26,716
2001-02	\$27,067	\$12,301	\$8,703	\$6,243	2001	\$27,506
2002-03	\$28,699	\$13,150	\$9,474	\$7,737	2002	\$28,664
2003-04	\$30,253	\$15,179	\$10,433	\$8,073	2003	\$29,467
Constant Dollars						
Academic Year	Tuition	In-State Fees			Calendar Year	Median Household Income
	ICU	UC	CSU	CCC		
1994-95	\$17,935	\$5,097	\$2,305	\$483	1994	\$43,713
1995-96	\$18,350	\$4,985	\$2,285	\$470	1995	\$44,576
1996-97	\$18,621	\$4,879	\$2,261	\$457	1996	\$45,451
1997-98	\$19,071	\$4,846	\$2,240	\$414	1997	\$45,670
1998-99	\$19,624	\$4,571	\$2,131	\$374	1998	\$46,344
1999-00	\$19,663	\$4,359	\$2,009	\$363	1999	\$47,978
2000-01	\$20,402	\$4,068	\$1,943	\$351	2000	\$49,752
2001-02	\$20,904	\$4,007	\$1,936	\$345	2001	\$49,357
2002-03	\$21,928	\$4,086	\$2,024	\$515	2002	\$48,461
2003-04	\$22,841	\$5,490	\$2,552	\$728	2003	\$49,300
Academic Year	Cost of Attendance				Calendar Year	Disposable Personal Income (Per Capita)
	ICU	UC	CSU	CCC		
1994-95	\$24,968	\$12,452	\$8,838	N/A	1994	\$25,430
1995-96	\$25,381	\$12,327	\$8,822	N/A	1995	\$25,611
1996-97	\$25,746	\$12,384	\$8,922	N/A	1996	\$25,776
1997-98	\$26,270	\$12,547	\$8,994	N/A	1997	\$26,224
1998-99	\$26,933	\$12,448	\$8,901	N/A	1998	\$27,464
1999-00	\$27,155	\$12,452	\$8,963	\$6,037	1999	\$27,587
2000-01	\$27,858	\$12,498	\$8,931	\$5,949	2000	\$28,392
2001-02	\$28,267	\$12,846	\$9,089	\$6,520	2001	\$28,725
2002-03	\$29,319	\$13,434	\$9,679	\$7,904	2002	\$29,283
2003-04	\$30,253	\$15,179	\$10,433	\$8,073	2003	\$29,467

NOTES: Cost of attendance includes in-state, undergraduate tuition and/or fees and on-campus room and board costs. The on-campus budget estimate for community colleges for 1999-00 to 2001-02 is an average of those campuses that maintain residence halls. For 2002-03 and 2003-04 it is computed for students living with their parents. Data for years previous to 1999-00 were not collected. In-state fees at the public segments include campus-based fees but not health insurance charges. Constant dollars are inflation-adjusted to the 2003-04 academic year. For an explanation of this conversion, see the final section of this report entitled "Notes and Sources." For annual and cumulative percentage changes, see Appendix A, Table A.

**TABLE 2**  
**Aid Awarded to Students at California Postsecondary Institutions**  
**In Current Dollars (In Thousands)**

**All California Institutions**

Programs	1994-95	1995-96	1996-97	1997-98	1998-99	1999-00	2000-01	2001-02	2002-03	2003-04
<b>Federally Supported Aid</b>										
Pell Grants	\$612,777	\$650,345	\$717,151	\$755,130	\$864,889	\$871,167	\$973,890	\$1,188,163	\$1,303,137	\$1,388,460
Campus-Based Aid										
SEOG	\$61,898	\$61,162	\$64,610	\$66,538	\$71,176	\$70,777	\$71,090	\$82,106	\$82,018	\$87,058
Federal Work-Study	\$60,642	\$57,380	\$62,575	\$70,620	\$88,381	\$99,980	\$96,525	\$113,212	\$113,881	\$115,959
Perkins Loans	\$56,115	\$56,551	\$51,427	\$54,844	\$56,608	\$53,331	\$53,282	\$60,389	\$79,816	\$69,346
LEAP/SLEAP	\$11,176	\$9,611	\$4,845	\$7,381	\$4,494	\$3,953	\$6,453	\$9,480	\$11,086	\$11,795
FFELP/FDLP Loans										
Subsidized Stafford	\$1,401,595	\$1,546,062	\$1,673,758	\$1,715,022	\$1,678,979	\$1,688,053	\$1,671,129	\$1,733,946	\$1,875,329	\$2,040,444
Unsubsidized Stafford	\$737,568	\$862,646	\$1,030,106	\$1,152,078	\$1,205,063	\$1,340,505	\$1,375,763	\$1,469,674	\$1,630,438	\$1,787,994
PLUS	\$152,155	\$191,288	\$224,860	\$257,847	\$283,142	\$333,294	\$379,999	\$432,576	\$495,450	\$677,837
Other Grants	\$38,098	\$39,634	\$38,814	\$41,639	\$40,985	\$38,441	\$45,632	\$51,137	\$53,499	\$56,044
Other Loans	\$9,711	\$3,991	\$2,827	\$3,330	\$3,996	\$3,481	\$4,432	\$4,438	\$5,792	\$7,457
<b>Total Federal Aid</b>	<b>\$3,141,735</b>	<b>\$3,478,670</b>	<b>\$3,870,973</b>	<b>\$4,124,429</b>	<b>\$4,297,713</b>	<b>\$4,502,982</b>	<b>\$4,678,196</b>	<b>\$5,145,122</b>	<b>\$5,650,446</b>	<b>\$6,242,396</b>
<b>State-Administered Aid</b>										
Cal Grant A	\$147,916	\$153,913	\$176,089	\$193,334	\$214,626	\$244,471	\$300,493	\$286,030	\$251,647	\$271,516
Cal Grant B	\$68,979	\$70,483	\$74,881	\$82,052	\$94,403	\$105,268	\$129,505	\$199,032	\$266,699	\$361,628
Cal Grant C	\$1,580	\$1,424	\$2,714	\$2,932	\$3,668	\$5,066	\$8,589	\$10,773	\$9,172	\$8,810
Cal Grant T	\$0	\$0	\$0	\$0	\$8,627	\$8,288	\$7,516	\$7,648	\$6,289	\$664
Other Grants	\$3,671	\$3,502	\$3,906	\$3,860	\$5,198	\$2,089	\$1,872	\$4,213	\$10,124	\$23,190
State Work-Study	\$804	\$904	\$896	\$860	\$1,270	\$2,404	\$4,286	\$4,679	\$4,763	\$0
<b>Total State Aid</b>	<b>\$222,950</b>	<b>\$230,226</b>	<b>\$258,486</b>	<b>\$283,038</b>	<b>\$327,792</b>	<b>\$367,586</b>	<b>\$452,261</b>	<b>\$512,375</b>	<b>\$548,694</b>	<b>\$665,807</b>
<b>Institution-Based Aid</b>										
Public	\$478,935	\$518,648	\$550,627	\$569,947	\$597,768	\$614,163	\$697,289	\$768,813	\$814,548	\$1,095,294
Independent	\$436,747	\$464,441	\$487,663	\$499,274	\$610,000	\$671,000	\$762,338	\$854,120	\$936,253	\$1,049,823
<b>Total Institution-Based Aid</b>	<b>\$915,682</b>	<b>\$983,089</b>	<b>\$1,038,290</b>	<b>\$1,069,221</b>	<b>\$1,207,768</b>	<b>\$1,285,163</b>	<b>\$1,459,627</b>	<b>\$1,622,933</b>	<b>\$1,750,801</b>	<b>\$2,145,117</b>
<b>TOTAL Federal, State, &amp; Institution-Based Aid</b>	<b>\$4,280,367</b>	<b>\$4,691,985</b>	<b>\$5,167,749</b>	<b>\$5,476,688</b>	<b>\$5,833,273</b>	<b>\$6,155,731</b>	<b>\$6,590,084</b>	<b>\$7,280,430</b>	<b>\$7,949,941</b>	<b>\$9,053,320</b>

NOTES: Figures are based on sector totals from Tables 3 and 4. The Federal Campus-Based programs require a contribution of institutional funds. Because consistent data were not available for all institutions, the campus contribution is included under federal aid.

The Federal Family Education Loan Program (FFELP) includes or has included Stafford subsidized and unsubsidized student loans, Parent Loans for Undergraduate Students (PLUS), and Supplemental Loans for Students (SLS). The SLS program was discontinued in 1994-95 and data for that year are included under "Other Loans". The Stafford Unsubsidized Loan Program was started in 1992-93.

The Federal Direct Loan Program (FDLP) began disbursing loans in 1994-95. It includes Stafford subsidized and unsubsidized loans and PLUS loans.

Only federal funds are counted under LEAP & SLEAP. The state share of the LEAP/SLEAP program is included under State Aid as a portion of the state expenditure on the Cal Grant A, B, C, and T programs.

The federal "Other Grants" category includes grants, scholarships and fellowships for Native Americans, graduate student fellowships, nursing grants and other small categorical scholarship programs. The federal "Other Loans" category includes health professions, nursing and HEAL loans.

The state "Other Grants" category includes Graduate Fellowships and Law Enforcement Dependents Scholarships.

See Tables 3 and 4 for descriptions of institution-based aid in public and independent nonprofit institutions. Information on institutional aid in the proprietary and specialty sector was not available.

**TABLE 2a**  
**Aid Awarded to Students at California Postsecondary Institutions**  
*In Constant Dollars (In Thousands)*

**All California Institutions**

Programs	1994-95	1995-96	1996-97	1997-98	1998-99	1999-00	2000-01	2001-02	2002-03	2003-04
<b>Federally Supported Aid</b>										
Pell Grants	\$758,154	\$783,325	\$839,829	\$868,814	\$979,205	\$957,996	\$1,034,976	\$1,240,840	\$1,331,276	\$1,388,460
<b>Campus-Based Aid</b>										
SEOG	\$76,583	\$73,668	\$75,662	\$76,555	\$80,584	\$77,831	\$75,549	\$85,746	\$83,789	\$87,058
Federal Work-Study	\$75,029	\$69,113	\$73,279	\$81,252	\$100,063	\$109,945	\$102,579	\$118,231	\$116,340	\$115,959
Perkins Loans	\$69,428	\$68,114	\$60,224	\$63,101	\$64,090	\$58,647	\$56,624	\$63,067	\$81,540	\$69,346
LEAP/SLEAP	\$13,827	\$11,576	\$5,674	\$8,493	\$5,088	\$4,347	\$6,858	\$9,901	\$11,325	\$11,795
<b>FFELP/FDLP Loans</b>										
Subsidized Stafford	\$1,734,114	\$1,862,196	\$1,960,076	\$1,973,216	\$1,900,896	\$1,856,301	\$1,775,948	\$1,810,819	\$1,915,823	\$2,040,444
Unsubsidized Stafford	\$912,551	\$1,039,037	\$1,206,319	\$1,325,522	\$1,364,341	\$1,474,113	\$1,462,055	\$1,534,831	\$1,665,644	\$1,787,994
PLUS	\$188,253	\$230,402	\$263,325	\$296,666	\$320,566	\$366,513	\$403,834	\$451,754	\$506,148	\$677,837
Other Grants	\$47,136	\$47,738	\$45,454	\$47,908	\$46,402	\$42,272	\$48,494	\$53,404	\$54,654	\$56,044
Other Loans	\$12,015	\$4,807	\$3,311	\$3,831	\$4,524	\$3,828	\$4,710	\$4,635	\$5,917	\$7,457
<b>Total Federal Aid</b>	<b>\$3,887,090</b>	<b>\$4,189,977</b>	<b>\$4,533,153</b>	<b>\$4,745,357</b>	<b>\$4,865,759</b>	<b>\$4,951,794</b>	<b>\$4,971,626</b>	<b>\$5,373,228</b>	<b>\$5,772,456</b>	<b>\$6,242,396</b>
<b>State-Administered Aid</b>										
Cal Grant A	\$183,008	\$185,385	\$206,211	\$222,440	\$242,994	\$268,837	\$319,341	\$298,711	\$257,081	\$271,516
Cal Grant B	\$85,344	\$84,895	\$87,690	\$94,405	\$106,881	\$115,760	\$137,628	\$207,856	\$272,458	\$361,628
Cal Grant C	\$1,955	\$1,715	\$3,178	\$3,373	\$4,153	\$5,571	\$9,128	\$11,250	\$9,370	\$8,810
Cal Grant T	\$0	\$0	\$0	\$0	\$9,767	\$9,114	\$7,987	\$7,987	\$6,425	\$664
Other Grants	\$4,542	\$4,218	\$4,574	\$4,441	\$5,885	\$2,297	\$1,989	\$4,400	\$10,343	\$23,190
State Work-Study	\$995	\$1,089	\$1,049	\$989	\$1,438	\$2,644	\$4,555	\$4,886	\$4,865	\$0
<b>Total State Aid</b>	<b>\$275,843</b>	<b>\$277,302</b>	<b>\$302,703</b>	<b>\$325,649</b>	<b>\$371,118</b>	<b>\$404,223</b>	<b>\$480,628</b>	<b>\$535,090</b>	<b>\$560,542</b>	<b>\$665,807</b>
<b>Institution-Based Aid</b>										
Public	\$592,559	\$624,699	\$644,819	\$655,752	\$676,777	\$675,377	\$741,026	\$802,898	\$832,136	\$1,095,294
Independent	\$526,052	\$543,890	\$561,080	\$565,265	\$670,799	\$713,087	\$810,154	\$891,987	\$956,469	\$1,049,823
<b>Total Institution-Based Aid</b>	<b>\$1,132,921</b>	<b>\$1,184,108</b>	<b>\$1,215,903</b>	<b>\$1,230,191</b>	<b>\$1,367,404</b>	<b>\$1,413,255</b>	<b>\$1,551,180</b>	<b>\$1,694,885</b>	<b>\$1,788,606</b>	<b>\$2,145,117</b>
<b>TOTAL Federal, State, &amp; Institution-Based Aid</b>	<b>\$5,295,854</b>	<b>\$5,651,387</b>	<b>\$6,051,760</b>	<b>\$6,301,197</b>	<b>\$6,604,280</b>	<b>\$6,769,273</b>	<b>\$7,003,434</b>	<b>\$7,603,203</b>	<b>\$8,121,604</b>	<b>\$9,053,320</b>

NOTES: Constant dollars are inflation-adjusted to the 2003-04 academic year. For an explanation of this conversion, see the final section of this report entitled "Notes and Sources."

For annual and cumulative percentage changes, see Appendix A, Table B.

**TABLE 3**  
**Aid Awarded to Students at Public California Institutions**  
**In Current Dollars (In Thousands)**

All Public Institutions										
Programs	1994-95	1995-96	1996-97	1997-98	1998-99	1999-00	2000-01	2001-02	2002-03	2003-04
<b>Federally Supported Aid</b>										
Pell Grants	\$430,822	\$478,287	\$541,031	\$576,700	\$662,612	\$655,446	\$733,895	\$894,674	\$990,913	\$1,037,067
<b>Campus-Based Aid</b>										
SEOG	\$35,965	\$37,696	\$43,141	\$45,193	\$44,642	\$43,820	\$47,324	\$53,721	\$49,888	\$52,216
Federal Work-Study	\$42,989	\$41,408	\$47,007	\$52,449	\$54,868	\$57,477	\$58,912	\$69,550	\$72,673	\$74,088
Perkins Loans	\$47,102	\$48,043	\$43,481	\$45,698	\$47,974	\$46,714	\$47,421	\$54,530	\$72,221	\$61,175
LEAP/SLEAP	\$7,430	\$6,472	\$3,181	\$4,511	\$2,998	\$2,943	\$3,477	\$5,481	\$5,201	\$4,553
<b>FFELP/FDLP Loans</b>										
Subsidized Stafford	\$615,786	\$731,628	\$794,229	\$816,992	\$760,244	\$716,128	\$708,196	\$736,145	\$811,665	\$878,478
Unsubsidized Stafford	\$158,743	\$214,444	\$264,978	\$310,477	\$298,812	\$329,123	\$347,984	\$387,251	\$444,400	\$483,858
PLUS	\$36,705	\$57,045	\$72,542	\$85,850	\$93,194	\$103,653	\$115,654	\$132,697	\$156,934	\$200,702
Other Grants	\$36,629	\$38,414	\$37,867	\$40,688	\$39,818	\$37,243	\$44,360	\$51,137	\$53,499	\$56,044
Other Loans	\$5,262	\$3,991	\$2,827	\$3,330	\$3,996	\$3,481	\$4,432	\$4,438	\$5,792	\$7,457
<b>Total Federal Aid</b>	<b>\$1,417,433</b>	<b>\$1,657,428</b>	<b>\$1,850,284</b>	<b>\$1,981,888</b>	<b>\$2,009,158</b>	<b>\$1,996,028</b>	<b>\$2,111,656</b>	<b>\$2,389,624</b>	<b>\$2,663,187</b>	<b>\$2,855,638</b>
<b>State-Administered Aid</b>										
Cal Grant A	\$82,979	\$88,453	\$96,315	\$97,818	\$94,309	\$92,573	\$101,715	\$92,878	\$78,581	\$102,191
Cal Grant B	\$60,948	\$63,352	\$68,294	\$73,826	\$83,738	\$91,792	\$113,969	\$166,424	\$210,140	\$288,100
Cal Grant C	\$550	\$473	\$571	\$727	\$1,249	\$1,428	\$1,858	\$2,182	\$2,100	\$2,014
Cal Grant T	\$0	\$0	\$0	\$0	\$2,963	\$1,808	\$1,579	\$1,042	\$1,125	\$56
Other Grants	\$1,017	\$1,148	\$1,230	\$1,169	\$3,447	\$1,236	\$1,772	\$4,213	\$10,124	\$23,190
State Work-Study	\$660	\$779	\$759	\$718	\$1,146	\$2,221	\$3,862	\$4,596	\$4,756	\$0
<b>Total State Aid</b>	<b>\$146,154</b>	<b>\$154,205</b>	<b>\$167,169</b>	<b>\$174,258</b>	<b>\$186,852</b>	<b>\$191,058</b>	<b>\$224,755</b>	<b>\$271,335</b>	<b>\$306,827</b>	<b>\$415,551</b>
<b>Institution-Based Aid</b>										
Grants/Schols/Fellowships	\$468,890	\$508,123	\$539,226	\$556,837	\$583,494	\$594,988	\$660,929	\$726,111	\$765,999	\$1,027,007
Loans	\$7,310	\$7,884	\$9,331	\$11,262	\$11,220	\$16,876	\$20,614	\$27,048	\$42,387	\$61,910
Work-Study	\$2,735	\$2,641	\$2,070	\$1,848	\$3,054	\$2,299	\$15,747	\$15,654	\$6,162	\$6,377
<b>Total Institution-Based Aid</b>	<b>\$478,935</b>	<b>\$518,648</b>	<b>\$550,627</b>	<b>\$569,947</b>	<b>\$597,768</b>	<b>\$614,163</b>	<b>\$697,289</b>	<b>\$768,813</b>	<b>\$814,548</b>	<b>\$1,095,294</b>
<b>TOTAL Federal, State, &amp; Institution-Based Aid</b>	<b>\$2,042,522</b>	<b>\$2,330,281</b>	<b>\$2,568,080</b>	<b>\$2,726,093</b>	<b>\$2,793,778</b>	<b>\$2,801,249</b>	<b>\$3,033,700</b>	<b>\$3,429,772</b>	<b>\$3,784,561</b>	<b>\$4,366,483</b>

NOTES: Amounts are aggregates of the data for the three public segments.  
See Table 2 for notes on federal and state aid programs.  
Institution-Based Aid includes scholarships, grants, loans and, in some cases, fellowships from private sources.

<b>TABLE 3a</b>										
<b>Aid Awarded to Students at Public California Institutions</b>										
<i>In Constant Dollars (In Thousands)</i>										
All Public Institutions										
Programs	1994-95	1995-96	1996-97	1997-98	1998-99	1999-00	2000-01	2001-02	2002-03	2003-04
<b>Federally Supported Aid</b>										
Pell Grants	\$533,032	\$576,086	\$633,581	\$663,521	\$750,192	\$720,774	\$779,927	\$934,339	\$1,012,310	\$1,037,067
<b>Campus-Based Aid</b>										
SEOG	\$44,497	\$45,404	\$50,521	\$51,997	\$50,543	\$48,188	\$50,292	\$56,103	\$50,965	\$52,216
Federal Work-Study	\$53,188	\$49,875	\$55,048	\$60,345	\$62,120	\$63,206	\$62,607	\$72,633	\$74,242	\$74,088
Perkins Loans	\$58,277	\$57,867	\$50,919	\$52,578	\$54,315	\$51,370	\$50,395	\$56,948	\$73,781	\$61,175
LEAP/SLEAP	\$9,193	\$7,795	\$3,725	\$5,190	\$3,395	\$3,236	\$3,695	\$5,724	\$5,314	\$4,553
FFELP/FDLP Loans	\$1,003,694	\$1,208,231	\$1,325,349	\$1,395,983	\$1,304,547	\$1,263,415	\$1,245,335	\$1,311,781	\$1,443,510	\$1,563,038
Subsidized Stafford	\$761,877	\$881,229	\$930,092	\$939,989	\$860,728	\$787,505	\$752,617	\$768,781	\$829,191	\$878,478
Unsubsidized Stafford	\$196,404	\$258,293	\$310,306	\$357,219	\$338,307	\$361,927	\$369,811	\$404,419	\$453,996	\$483,858
PLUS	\$45,413	\$68,709	\$84,951	\$98,775	\$105,512	\$113,984	\$122,908	\$138,580	\$160,323	\$200,702
Other Grants	\$45,319	\$46,269	\$44,345	\$46,814	\$45,081	\$40,955	\$47,142	\$53,404	\$54,654	\$56,044
Other Loans	\$6,510	\$4,807	\$3,311	\$3,831	\$4,524	\$3,828	\$4,710	\$4,635	\$5,917	\$7,457
<b>Total Federal Aid</b>	<b>\$1,753,709</b>	<b>\$1,996,334</b>	<b>\$2,166,799</b>	<b>\$2,280,259</b>	<b>\$2,274,717</b>	<b>\$2,194,972</b>	<b>\$2,244,105</b>	<b>\$2,495,567</b>	<b>\$2,720,693</b>	<b>\$2,855,638</b>
<b>State-Administered Aid</b>										
Cal Grant A	\$102,665	\$106,540	\$112,791	\$112,544	\$106,774	\$101,800	\$108,095	\$96,996	\$80,278	\$102,191
Cal Grant B	\$75,407	\$76,306	\$79,977	\$84,940	\$94,806	\$100,941	\$121,117	\$173,802	\$214,678	\$288,100
Cal Grant C	\$680	\$570	\$669	\$836	\$1,414	\$1,570	\$1,975	\$2,278	\$2,146	\$2,014
Cal Grant T	\$0	\$0	\$0	\$0	\$3,355	\$1,988	\$1,678	\$1,088	\$1,150	\$56
Other Grants	\$1,258	\$1,383	\$1,440	\$1,345	\$3,903	\$1,359	\$1,883	\$4,400	\$10,343	\$23,190
State Work-Study	\$817	\$938	\$889	\$826	\$1,297	\$2,442	\$4,104	\$4,800	\$4,859	\$0
<b>Total State Aid</b>	<b>\$180,828</b>	<b>\$185,736</b>	<b>\$195,765</b>	<b>\$200,492</b>	<b>\$211,549</b>	<b>\$210,101</b>	<b>\$238,852</b>	<b>\$283,364</b>	<b>\$313,452</b>	<b>\$415,551</b>
<b>Institution-Based Aid</b>										
Grants/Scholarships/Fellowships	\$580,131	\$612,022	\$631,468	\$640,668	\$660,617	\$654,290	\$702,384	\$758,303	\$782,539	\$1,027,007
Loans	\$9,044	\$9,496	\$10,927	\$12,957	\$12,703	\$18,558	\$21,907	\$28,247	\$43,302	\$61,910
Work-Study	\$3,384	\$3,181	\$2,424	\$2,126	\$3,458	\$2,528	\$16,734	\$16,348	\$6,295	\$6,377
<b>Total Institution-Based Aid</b>	<b>\$592,559</b>	<b>\$624,699</b>	<b>\$644,819</b>	<b>\$655,752</b>	<b>\$676,777</b>	<b>\$675,377</b>	<b>\$741,026</b>	<b>\$802,898</b>	<b>\$832,136</b>	<b>\$1,095,294</b>
<b>TOTAL Federal, State, &amp; Institution-Based Aid</b>	<b>\$2,527,096</b>	<b>\$2,806,769</b>	<b>\$3,007,383</b>	<b>\$3,136,503</b>	<b>\$3,163,043</b>	<b>\$3,080,449</b>	<b>\$3,223,983</b>	<b>\$3,581,829</b>	<b>\$3,866,281</b>	<b>\$4,366,483</b>
NOTES: Constant dollars are inflation-adjusted to the 2003-04 academic year. For an explanation of this conversion, see the final section of this report entitled "Notes and Sources."										
For annual and cumulative percentage changes, see Appendix A, Table C.										

**TABLE 3.1**  
**Aid Awarded to Students at Public California Institutions**  
**In Current Dollars (In Thousands)**

University of California										
Programs	1994-95	1995-96	1996-97	1997-98	1998-99	1999-00	2000-01	2001-02	2002-03	2003-04
<b>Federally Supported Aid</b>										
Pell Grants	\$63,620	\$69,512	\$76,499	\$84,048	\$95,241	\$95,190	\$101,486	\$122,868	\$141,112	\$149,419
<b>Campus-Based Aid</b>										
SEOG	\$8,619	\$9,376	\$9,449	\$10,174	\$9,600	\$9,198	\$10,753	\$12,677	\$10,131	\$11,014
Federal Work-Study	\$14,897	\$15,349	\$16,655	\$18,931	\$19,139	\$20,699	\$18,973	\$24,045	\$23,786	\$27,154
Perkins Loans	\$30,154	\$28,760	\$25,252	\$28,131	\$30,693	\$28,378	\$29,293	\$35,605	\$52,099	\$41,537
LEAP/SLEAP	\$4,727	\$4,116	\$2,147	\$3,133	\$1,335	\$1,215	\$1,280	\$525	\$214	\$42
<b>FFELP/FDLP Loans</b>										
Subsidized Stafford	\$242,869	\$270,489	\$282,162	\$282,800	\$272,898	\$260,307	\$257,322	\$273,954	\$299,920	\$331,489
Unsubsidized Stafford	\$73,056	\$86,594	\$106,418	\$119,910	\$120,274	\$131,378	\$141,944	\$154,924	\$172,487	\$195,363
PLUS	\$28,237	\$42,193	\$55,775	\$62,346	\$66,746	\$74,944	\$84,532	\$97,667	\$113,811	\$138,156
Other Grants	\$35,187	\$37,102	\$37,225	\$39,884	\$38,995	\$36,507	\$43,323	\$49,737	\$52,134	\$54,054
Other Loans	\$4,715	\$3,826	\$2,531	\$2,944	\$3,662	\$3,204	\$4,179	\$4,142	\$5,533	\$7,077
<b>Total Federal Aid</b>	<b>\$506,081</b>	<b>\$567,317</b>	<b>\$614,113</b>	<b>\$652,301</b>	<b>\$658,583</b>	<b>\$661,020</b>	<b>\$693,085</b>	<b>\$776,144</b>	<b>\$871,227</b>	<b>\$955,305</b>
<b>State-Administered Aid</b>										
Cal Grant A	\$68,666	\$72,941	\$77,662	\$77,914	\$73,976	\$71,578	\$75,879	\$69,381	\$58,729	\$77,025
Cal Grant B	\$25,577	\$27,507	\$29,359	\$31,641	\$36,378	\$40,896	\$49,044	\$65,925	\$82,641	\$124,405
Cal Grant C	\$0	\$0	\$5	\$0	\$0	\$0	\$32	\$50	\$44	\$33
Cal Grant T	\$0	\$0	\$0	\$0	\$928	\$521	\$539	\$250	\$401	\$2
Other Grants	\$930	\$1,060	\$1,124	\$1,048	\$1,359	\$1,226	\$1,767	\$4,210	\$10,124	\$23,190
State Work-Study	\$218	\$276	\$299	\$243	\$324	\$748	\$1,187	\$1,859	\$2,309	\$0
<b>Total State Aid</b>	<b>\$95,391</b>	<b>\$101,784</b>	<b>\$108,449</b>	<b>\$110,846</b>	<b>\$112,965</b>	<b>\$114,969</b>	<b>\$128,448</b>	<b>\$141,675</b>	<b>\$154,249</b>	<b>\$224,655</b>
<b>Institution-Based Aid</b>										
Undergrad. Grants/Schols.	\$132,575	\$140,475	\$145,465	\$145,278	\$162,130	\$174,998	\$190,195	\$221,283	\$228,498	\$297,432
Grad. Grants/Fellowships	\$103,481	\$122,736	\$135,030	\$143,167	\$150,922	\$160,257	\$175,636	\$189,974	\$209,232	\$244,836
Loans	\$6,022	\$5,712	\$6,399	\$7,772	\$9,673	\$14,324	\$15,596	\$20,440	\$28,411	\$44,892
Work-Study	\$1,398	\$1,538	\$695	\$473	\$348	\$249	\$58	\$65	\$217	\$2,356
<b>Total Institution-Based Aid</b>	<b>\$243,476</b>	<b>\$270,461</b>	<b>\$287,589</b>	<b>\$296,690</b>	<b>\$323,073</b>	<b>\$349,828</b>	<b>\$381,485</b>	<b>\$431,762</b>	<b>\$466,358</b>	<b>\$589,516</b>
<b>TOTAL Federal, State, &amp; Institution-Based Aid</b>	<b>\$844,948</b>	<b>\$939,562</b>	<b>\$1,010,151</b>	<b>\$1,059,837</b>	<b>\$1,094,621</b>	<b>\$1,125,817</b>	<b>\$1,203,019</b>	<b>\$1,349,581</b>	<b>\$1,491,834</b>	<b>\$1,769,476</b>
NOTES: Institution-based grants, scholarships, fellowships and loans include outside agency support.										

<b>TABLE 3.1a</b>										
<b>Aid Awarded to Students at Public California Institutions</b>										
<i>In Constant Dollars (In Thousands)</i>										
University of California										
Programs	1994-95	1995-96	1996-97	1997-98	1998-99	1999-00	2000-01	2001-02	2002-03	2003-04
<b>Federally Supported Aid</b>										
Pell Grants	\$78,713	\$83,726	\$89,585	\$96,701	\$107,829	\$104,678	\$107,852	\$128,315	\$144,159	\$149,419
<b>Campus-Based Aid</b>										
SEOG	\$10,664	\$11,293	\$11,065	\$11,706	\$10,869	\$10,115	\$11,427	\$13,239	\$10,350	\$11,014
Federal Work-Study	\$18,431	\$18,488	\$19,504	\$21,781	\$21,669	\$22,762	\$20,163	\$25,111	\$24,300	\$27,154
Perkins Loans	\$37,308	\$34,641	\$29,572	\$32,366	\$34,750	\$31,206	\$31,130	\$37,184	\$53,224	\$41,537
LEAP/SLEAP	\$5,848	\$4,958	\$2,514	\$3,605	\$1,512	\$1,336	\$1,361	\$548	\$219	\$42
<b>FFELP/FDLP Loans</b>										
Subsidized Stafford	\$300,488	\$325,798	\$330,429	\$325,375	\$308,968	\$286,252	\$273,462	\$286,100	\$306,396	\$331,489
Unsubsidized Stafford	\$90,388	\$104,300	\$124,622	\$137,962	\$136,171	\$144,472	\$150,847	\$161,792	\$176,212	\$195,363
PLUS	\$34,936	\$50,820	\$65,316	\$71,732	\$75,568	\$82,414	\$89,834	\$101,997	\$116,269	\$138,156
Other Grants	\$43,535	\$44,688	\$43,593	\$45,888	\$44,149	\$40,146	\$46,040	\$51,942	\$53,260	\$54,054
Other Loans	\$5,834	\$4,608	\$2,964	\$3,387	\$4,146	\$3,523	\$4,441	\$4,326	\$5,652	\$7,077
<b>Total Federal Aid</b>	<b>\$626,145</b>	<b>\$683,320</b>	<b>\$719,165</b>	<b>\$750,504</b>	<b>\$745,631</b>	<b>\$726,904</b>	<b>\$736,558</b>	<b>\$810,554</b>	<b>\$890,040</b>	<b>\$955,305</b>
<b>State-Administered Aid</b>										
Cal Grant A	\$84,957	\$87,856	\$90,947	\$89,644	\$83,754	\$78,712	\$80,638	\$72,457	\$59,997	\$77,025
Cal Grant B	\$31,645	\$33,132	\$34,381	\$36,405	\$41,186	\$44,972	\$52,120	\$68,847	\$84,426	\$124,405
Cal Grant C	\$0	\$0	\$6	\$0	\$0	\$0	\$34	\$53	\$47	\$35
Cal Grant T	\$0	\$0	\$0	\$0	\$1,051	\$573	\$573	\$261	\$410	\$2
Other Grants	\$1,151	\$1,277	\$1,316	\$1,206	\$1,539	\$1,348	\$1,878	\$4,397	\$10,343	\$23,190
State Work-Study	\$270	\$332	\$350	\$280	\$367	\$823	\$1,262	\$1,941	\$2,359	\$0
<b>Total State Aid</b>	<b>\$118,022</b>	<b>\$122,596</b>	<b>\$127,001</b>	<b>\$127,534</b>	<b>\$127,896</b>	<b>\$126,428</b>	<b>\$136,505</b>	<b>\$147,956</b>	<b>\$157,579</b>	<b>\$224,655</b>
<b>Institution-Based Aid</b>										
Undergrad. Grants/Schols.	\$164,027	\$169,199	\$170,349	\$167,149	\$183,559	\$192,440	\$202,125	\$231,093	\$233,432	\$297,432
Grad. Grants/Fellowships	\$128,031	\$147,833	\$158,129	\$164,721	\$170,870	\$176,230	\$186,652	\$198,396	\$213,750	\$244,836
Loans	\$7,451	\$6,880	\$7,494	\$8,942	\$10,952	\$15,752	\$16,574	\$21,346	\$29,024	\$44,892
Work-Study	\$1,730	\$1,852	\$814	\$544	\$394	\$274	\$62	\$68	\$222	\$2,356
<b>Total Institution-Based Aid</b>	<b>\$301,239</b>	<b>\$325,764</b>	<b>\$336,785</b>	<b>\$341,356</b>	<b>\$365,775</b>	<b>\$384,695</b>	<b>\$405,413</b>	<b>\$450,904</b>	<b>\$476,428</b>	<b>\$589,516</b>
<b>TOTAL Federal, State, &amp; Institution-Based Aid</b>	<b>\$1,045,406</b>	<b>\$1,131,681</b>	<b>\$1,182,950</b>	<b>\$1,219,394</b>	<b>\$1,239,302</b>	<b>\$1,238,027</b>	<b>\$1,278,476</b>	<b>\$1,409,414</b>	<b>\$1,524,047</b>	<b>\$1,769,476</b>
<p>NOTES: Constant dollars are inflation-adjusted to the 2003-04 academic year. For an explanation of this conversion, see the final section of this report entitled "Notes and Sources."</p> <p>For annual and cumulative percentage changes, see Appendix A, Table D.</p>										

**TABLE 3.2**  
**Aid Awarded to Students at Public California Institutions**  
**In Current Dollars (In Thousands)**

California State University

Programs	1994-95	1995-96	1996-97	1997-98	1998-99	1999-00	2000-01	2001-02	2002-03	2003-04
<b>Federally Supported Aid</b>										
Pell Grants	\$130,301	\$148,597	\$169,309	\$192,652	\$224,200	\$224,842	\$245,889	\$294,256	\$316,080	\$321,400
Campus-Based Aid										
SEOG	\$11,605	\$10,352	\$10,249	\$11,576	\$12,228	\$12,138	\$12,394	\$13,668	\$11,794	\$11,294
Federal Work-Study	\$13,838	\$11,378	\$12,059	\$15,225	\$15,984	\$18,047	\$18,316	\$20,960	\$22,403	\$20,631
Perkins Loans	\$14,826	\$16,898	\$16,211	\$15,549	\$15,041	\$16,129	\$15,651	\$16,626	\$17,579	\$17,482
LEAP/SLEAP	\$1,851	\$1,580	\$810	\$1,000	\$676	\$745	\$563	\$350	\$143	\$27
FFELP/FDLP Loans										
Subsidized Stafford	\$304,544	\$382,910	\$437,263	\$455,963	\$443,863	\$415,780	\$398,409	\$405,324	\$447,336	\$472,621
Unsubsidized Stafford	\$70,610	\$103,299	\$131,022	\$166,015	\$165,775	\$185,174	\$189,531	\$212,072	\$241,838	\$253,368
PLUS	\$8,203	\$14,576	\$16,440	\$23,228	\$26,165	\$28,280	\$30,606	\$34,383	\$42,163	\$60,984
Other Grants	\$1,442	\$1,312	\$642	\$804	\$823	\$736	\$1,037	\$1,400	\$1,365	\$1,990
Other Loans	\$526	\$165	\$296	\$386	\$334	\$277	\$253	\$296	\$259	\$380
<b>Total Federal Aid</b>	<b>\$557,746</b>	<b>\$691,067</b>	<b>\$794,301</b>	<b>\$882,398</b>	<b>\$905,089</b>	<b>\$902,148</b>	<b>\$912,649</b>	<b>\$999,335</b>	<b>\$1,100,960</b>	<b>\$1,160,177</b>
<b>State-Administered Aid</b>										
Cal Grant A	\$14,313	\$15,512	\$18,653	\$19,904	\$20,333	\$20,995	\$25,836	\$23,497	\$19,852	\$25,166
Cal Grant B	\$20,442	\$20,176	\$21,880	\$23,904	\$28,868	\$32,666	\$39,719	\$58,640	\$72,834	\$101,371
Cal Grant C	\$0	\$0	\$0	\$0	\$0	\$0	\$0	\$0	\$0	\$0
Cal Grant T	\$0	\$0	\$0	\$0	\$2,035	\$1,287	\$1,040	\$792	\$724	\$54
Other Grants	\$84	\$84	\$98	\$114	\$2,088	\$10	\$5	\$3	\$0	\$0
State Work-Study	\$244	\$307	\$247	\$262	\$334	\$696	\$1,041	\$1,009	\$867	\$0
<b>Total State Aid</b>	<b>\$35,083</b>	<b>\$36,079</b>	<b>\$40,878</b>	<b>\$44,184</b>	<b>\$53,658</b>	<b>\$55,654</b>	<b>\$67,641</b>	<b>\$83,941</b>	<b>\$94,276</b>	<b>\$126,590</b>
<b>Institution-Based Aid</b>										
State University Grants	\$94,623	\$95,390	\$100,217	\$100,716	\$106,217	\$104,667	\$120,570	\$117,329	\$116,452	\$187,327
Educational Opportunity Prg.	\$13,831	\$13,941	\$13,791	\$14,092	\$13,860	\$16,737	\$17,490	\$17,242	\$17,187	\$17,593
Other Grants/Scholarships	\$23,739	\$28,002	\$29,408	\$35,816	\$39,521	\$39,804	\$48,492	\$58,392	\$58,527	\$69,276
Loans	\$219	\$260	\$479	\$1,037	\$1,482	\$2,433	\$3,730	\$6,165	\$13,398	\$15,910
Work-Study	\$0	\$0	\$0	\$0	\$55	\$53	\$27	\$0	\$383	\$156
<b>Total Institution-Based Aid</b>	<b>\$132,412</b>	<b>\$137,593</b>	<b>\$143,895</b>	<b>\$151,661</b>	<b>\$161,135</b>	<b>\$163,694</b>	<b>\$190,309</b>	<b>\$199,128</b>	<b>\$205,947</b>	<b>\$290,262</b>
<b>TOTAL Federal, State, &amp; Institution-Based Aid</b>	<b>\$725,241</b>	<b>\$864,739</b>	<b>\$979,074</b>	<b>\$1,078,243</b>	<b>\$1,119,882</b>	<b>\$1,121,496</b>	<b>\$1,170,599</b>	<b>\$1,282,404</b>	<b>\$1,401,183</b>	<b>\$1,577,029</b>

NOTES: The primary source of institution-based aid is the State University Grants program, a need-based program for undergraduate and graduate students. The other large single source of aid is the Educational Opportunity Program, which provides grants to students who are eligible for the federal student support services program.

**TABLE 3.2a**  
**Aid Awarded to Students at Public California Institutions**  
*In Constant Dollars (In Thousands)*

California State University										
Programs	1994-95	1995-96	1996-97	1997-98	1998-99	1999-00	2000-01	2001-02	2002-03	2003-04
<b>Federally Supported Aid</b>										
Pell Grants	\$161,214	\$178,982	\$198,272	\$221,656	\$253,833	\$247,252	\$261,312	\$307,302	\$322,905	\$321,400
Campus-Based Aid										
SEOG	\$14,358	\$12,469	\$12,002	\$13,319	\$13,844	\$13,348	\$13,171	\$14,274	\$12,049	\$11,294
Federal Work-Study	\$17,121	\$13,705	\$14,122	\$17,517	\$18,097	\$19,846	\$19,465	\$21,889	\$22,887	\$20,631
Perkins Loans	\$18,343	\$20,353	\$18,984	\$17,890	\$17,029	\$17,737	\$16,633	\$17,363	\$17,959	\$17,482
LEAP/SLEAP	\$2,290	\$1,903	\$949	\$1,151	\$765	\$819	\$598	\$366	\$146	\$27
FFELP/FDLP Loans										
Subsidized Stafford	\$376,795	\$461,206	\$512,063	\$524,608	\$502,530	\$457,221	\$423,398	\$423,294	\$456,995	\$472,621
Unsubsidized Stafford	\$87,362	\$124,421	\$153,435	\$191,008	\$187,686	\$203,630	\$201,419	\$221,474	\$247,060	\$253,368
PLUS	\$10,149	\$17,556	\$19,252	\$26,725	\$29,623	\$31,099	\$32,526	\$35,907	\$43,073	\$60,984
Other Grants	\$1,784	\$1,580	\$752	\$925	\$932	\$809	\$1,102	\$1,462	\$1,394	\$1,990
Other Loans	\$651	\$199	\$347	\$444	\$378	\$305	\$269	\$309	\$265	\$380
<b>Total Federal Aid</b>	<b>\$690,067</b>	<b>\$832,374</b>	<b>\$930,176</b>	<b>\$1,015,242</b>	<b>\$1,024,718</b>	<b>\$992,065</b>	<b>\$969,893</b>	<b>\$1,043,640</b>	<b>\$1,124,733</b>	<b>\$1,160,177</b>
<b>State-Administered Aid</b>										
Cal Grant A	\$17,709	\$18,684	\$21,844	\$22,901	\$23,020	\$23,088	\$27,457	\$24,539	\$20,280	\$25,166
Cal Grant B	\$25,292	\$24,302	\$25,623	\$27,503	\$32,684	\$35,922	\$42,210	\$61,240	\$74,406	\$101,371
Cal Grant C	\$0	\$0	\$0	\$0	\$0	\$0	\$0	\$0	\$0	\$0
Cal Grant T	\$0	\$0	\$0	\$0	\$2,304	\$1,415	\$1,105	\$827	\$740	\$54
Other Grants	\$104	\$101	\$115	\$131	\$2,364	\$11	\$5	\$3	\$0	\$0
State Work-Study	\$302	\$370	\$289	\$301	\$378	\$765	\$1,106	\$1,054	\$886	\$0
<b>Total State Aid</b>	<b>\$43,406</b>	<b>\$43,456</b>	<b>\$47,871</b>	<b>\$50,836</b>	<b>\$60,750</b>	<b>\$61,201</b>	<b>\$71,884</b>	<b>\$87,662</b>	<b>\$96,312</b>	<b>\$126,590</b>
<b>Institution-Based Aid</b>										
State University Grants	\$117,072	\$114,895	\$117,360	\$115,879	\$120,256	\$115,099	\$128,133	\$122,531	\$118,967	\$187,327
Educational Opportunity Prg.	\$17,112	\$16,792	\$16,150	\$16,214	\$15,692	\$18,405	\$18,587	\$18,006	\$17,558	\$17,593
Other Grants/Scholarships	\$29,371	\$33,728	\$34,439	\$41,208	\$44,745	\$43,771	\$51,534	\$60,981	\$59,791	\$69,276
Loans	\$271	\$313	\$561	\$1,193	\$1,678	\$2,675	\$3,964	\$6,438	\$13,687	\$15,910
Work-Study	\$0	\$0	\$0	\$0	\$62	\$58	\$29	\$0	\$391	\$156
<b>Total Institution-Based Aid</b>	<b>\$163,826</b>	<b>\$165,728</b>	<b>\$168,510</b>	<b>\$174,493</b>	<b>\$182,433</b>	<b>\$180,009</b>	<b>\$202,246</b>	<b>\$207,956</b>	<b>\$210,394</b>	<b>\$290,262</b>
<b>TOTAL Federal, State, &amp; Institution-Based Aid</b>	<b>\$897,299</b>	<b>\$1,041,558</b>	<b>\$1,146,557</b>	<b>\$1,240,571</b>	<b>\$1,267,901</b>	<b>\$1,233,276</b>	<b>\$1,244,023</b>	<b>\$1,339,258</b>	<b>\$1,431,439</b>	<b>\$1,577,029</b>

NOTES: Constant dollars are inflation-adjusted to the 2003-04 academic year. For an explanation of this conversion, see the final section of this report entitled "Notes and Sources."

For annual and cumulative percentage changes, see Appendix A, Table E.

**TABLE 3.3**  
**Aid Awarded to Students at Public California Institutions**  
**In Current Dollars (In Thousands)**

**California Community Colleges**

Programs	1994-95	1995-96	1996-97	1997-98	1998-99	1999-00	2000-01	2001-02	2002-03	2003-04
<b>Federally Supported Aid</b>										
Pell Grants	\$236,901	\$260,178	\$295,223	\$300,000	\$343,171	\$335,414	\$386,520	\$477,550	\$533,721	\$566,248
<b>Campus-Based Aid</b>										
SEOG	\$15,741	\$17,968	\$23,443	\$23,443	\$22,814	\$22,484	\$24,177	\$27,376	\$27,963	\$29,908
Federal Work-Study	\$14,254	\$14,681	\$18,293	\$18,293	\$19,745	\$18,731	\$21,623	\$24,545	\$26,484	\$26,303
Perkins Loans	\$2,122	\$2,385	\$2,018	\$2,018	\$2,240	\$2,207	\$2,477	\$2,299	\$2,543	\$2,156
LEAP/SLEAP	\$852	\$776	\$224	\$378	\$987	\$983	\$1,634	\$4,606	\$4,844	\$4,485
<b>FFELP/FDLP Loans</b>										
Subsidized Stafford	\$68,373	\$78,229	\$74,804	\$78,229	\$43,483	\$40,041	\$52,465	\$56,867	\$64,409	\$74,368
Unsubsidized Stafford	\$15,077	\$24,551	\$27,538	\$24,552	\$12,763	\$12,571	\$16,509	\$20,255	\$30,075	\$35,127
PLUS	\$265	\$276	\$327	\$276	\$283	\$429	\$516	\$647	\$960	\$1,562
Other Grants	\$0	\$0	\$0	\$0	\$0	\$0	\$0	\$0	\$0	\$0
Other Loans	\$21	\$0	\$0	\$0	\$0	\$0	\$0	\$0	\$0	\$0
<b>Total Federal Aid</b>	<b>\$353,606</b>	<b>\$399,044</b>	<b>\$441,870</b>	<b>\$447,189</b>	<b>\$445,486</b>	<b>\$432,860</b>	<b>\$505,921</b>	<b>\$614,145</b>	<b>\$690,999</b>	<b>\$740,157</b>
<b>State-Administered Aid</b>										
Cal Grant A	\$0	\$0	\$0	\$0	\$0	\$0	\$0	\$0	\$0	\$0
Cal Grant B	\$14,929	\$15,669	\$17,055	\$18,281	\$18,492	\$18,230	\$25,206	\$41,859	\$54,666	\$62,324
Cal Grant C	\$550	\$473	\$566	\$727	\$1,249	\$1,428	\$1,826	\$2,132	\$2,056	\$1,981
Cal Grant T	\$0	\$0	\$0	\$0	\$0	\$0	\$0	\$0	\$0	\$0
Other Grants	\$3	\$4	\$8	\$7	\$0	\$0	\$0	\$0	\$0	\$0
State Work-Study	\$198	\$196	\$213	\$213	\$488	\$777	\$1,634	\$1,728	\$1,580	\$0
<b>Total State Aid</b>	<b>\$15,680</b>	<b>\$16,342</b>	<b>\$17,842</b>	<b>\$19,228</b>	<b>\$20,229</b>	<b>\$20,435</b>	<b>\$28,666</b>	<b>\$45,719</b>	<b>\$58,302</b>	<b>\$64,305</b>
<b>Institution-Based Aid</b>										
Board of Govs Fee Waiver	\$88,566	\$94,051	\$99,183	\$101,636	\$95,312	\$81,816	\$90,131	\$91,538	\$102,726	\$168,186
Extended Opportunity Svcs	\$5,328	\$6,199	\$8,185	\$8,185	\$8,179	\$8,552	\$11,689	\$13,192	\$11,354	\$14,518
Other Grants/Scholarships	\$6,747	\$7,329	\$7,947	\$7,947	\$7,353	\$8,157	\$6,725	\$17,161	\$22,023	\$27,839
Loans	\$1,069	\$1,912	\$2,453	\$2,453	\$65	\$119	\$1,288	\$443	\$578	\$1,108
Work-Study	\$1,337	\$1,103	\$1,375	\$1,375	\$2,651	\$1,997	\$15,661	\$15,589	\$5,562	\$3,865
<b>Total Institution-Based Aid</b>	<b>\$103,047</b>	<b>\$110,594</b>	<b>\$119,143</b>	<b>\$121,596</b>	<b>\$113,560</b>	<b>\$100,641</b>	<b>\$125,495</b>	<b>\$137,923</b>	<b>\$142,243</b>	<b>\$215,516</b>
<b>TOTAL Federal, State, &amp; Institution-Based Aid</b>	<b>\$472,333</b>	<b>\$525,980</b>	<b>\$578,855</b>	<b>\$588,013</b>	<b>\$579,275</b>	<b>\$553,936</b>	<b>\$660,082</b>	<b>\$797,787</b>	<b>\$891,544</b>	<b>\$1,019,978</b>

NOTES: After 1993-94, data that distinguished small, miscellaneous federal grants and loans were not collected. Some federal funds may be included under Institution-Based Aid.

Beginning in 1993-94, the Board of Governors program changed from direct grants to a fee waiver. Amounts shown for the Board of Governors Fee Waiver represent the value of enrollment fees waived for eligible students. There were no direct appropriations for this program.

Extended Opportunity Services provides both services and student aid to EOPS-eligible students; only student aid funds are reported here.

CARE Grant amounts are included in "Other Grants/Scholarships" under Institution-Based Aid.

<b>TABLE 3.3a</b>										
<b>Aid Awarded to Students at Public California Institutions</b>										
<i>In Constant Dollars (In Thousands)</i>										
<b>California Community Colleges</b>										
Programs	1994-95	1995-96	1996-97	1997-98	1998-99	1999-00	2000-01	2001-02	2002-03	2003-04
<b>Federally Supported Aid</b>										
Pell Grants	\$293,104	\$313,378	\$345,725	\$345,165	\$388,529	\$368,845	\$410,764	\$498,722	\$545,246	\$566,248
<b>Campus-Based Aid</b>										
SEOG	\$19,475	\$21,642	\$27,453	\$26,972	\$25,829	\$24,725	\$25,693	\$28,590	\$28,567	\$29,908
Federal Work-Study	\$17,636	\$17,683	\$21,422	\$21,047	\$22,355	\$20,598	\$22,979	\$25,633	\$27,056	\$26,303
Perkins Loans	\$2,625	\$2,873	\$2,363	\$2,322	\$2,536	\$2,427	\$2,632	\$2,401	\$2,598	\$2,156
LEAP/SLEAP	\$1,054	\$935	\$262	\$435	\$1,117	\$1,081	\$1,736	\$4,811	\$4,949	\$4,485
<b>FFELP/FDLP Loans</b>										
Subsidized Stafford	\$84,594	\$94,225	\$87,600	\$90,006	\$49,230	\$44,032	\$55,756	\$59,388	\$65,800	\$74,368
Unsubsidized Stafford	\$18,654	\$29,571	\$32,249	\$28,248	\$14,450	\$13,824	\$17,544	\$21,153	\$30,724	\$35,127
PLUS	\$328	\$332	\$383	\$318	\$320	\$472	\$548	\$676	\$981	\$1,562
Other Grants	\$0	\$0	\$0	\$0	\$0	\$0	\$0	\$0	\$0	\$0
Other Loans	\$26	\$0	\$0	\$0	\$0	\$0	\$0	\$0	\$0	\$0
<b>Total Federal Aid</b>	<b>\$437,497</b>	<b>\$480,639</b>	<b>\$517,458</b>	<b>\$514,513</b>	<b>\$504,368</b>	<b>\$476,003</b>	<b>\$537,654</b>	<b>\$675,357</b>	<b>\$734,341</b>	<b>\$813,928</b>
<b>State-Administered Aid</b>										
Cal Grant A	\$0	\$0	\$0	\$0	\$0	\$0	\$0	\$0	\$0	\$0
Cal Grant B	\$18,471	\$18,873	\$19,972	\$21,033	\$20,936	\$20,047	\$26,787	\$43,715	\$55,846	\$62,324
Cal Grant C	\$680	\$570	\$663	\$836	\$1,414	\$1,570	\$1,941	\$2,226	\$2,101	\$1,981
Cal Grant T	\$0	\$0	\$0	\$0	\$0	\$0	\$0	\$0	\$0	\$0
Other Grants	\$4	\$5	\$9	\$8	\$0	\$0	\$0	\$0	\$0	\$0
State Work-Study	\$245	\$236	\$249	\$245	\$553	\$854	\$1,736	\$1,805	\$1,614	\$0
<b>Total State Aid</b>	<b>\$19,400</b>	<b>\$19,684</b>	<b>\$20,894</b>	<b>\$22,123</b>	<b>\$22,903</b>	<b>\$22,472</b>	<b>\$30,464</b>	<b>\$47,746</b>	<b>\$59,561</b>	<b>\$64,305</b>
<b>Institution-Based Aid</b>										
Board of Govs Fee Waiver	\$109,578	\$113,282	\$116,150	\$116,937	\$107,910	\$89,971	\$95,785	\$95,596	\$104,944	\$168,186
Extended Opportunity Svcs	\$6,592	\$7,467	\$9,585	\$9,417	\$9,260	\$9,404	\$12,422	\$13,777	\$11,599	\$14,518
Other Grants/Scholarships	\$8,348	\$8,828	\$9,306	\$9,143	\$8,325	\$8,970	\$7,147	\$17,922	\$22,499	\$27,839
Loans	\$1,323	\$2,303	\$2,873	\$2,822	\$74	\$131	\$1,369	\$463	\$590	\$1,108
Work-Study	\$1,654	\$1,329	\$1,610	\$1,582	\$3,001	\$2,196	\$16,644	\$16,280	\$5,682	\$3,865
<b>Total Institution-Based Aid</b>	<b>\$127,494</b>	<b>\$133,208</b>	<b>\$139,524</b>	<b>\$139,902</b>	<b>\$128,570</b>	<b>\$110,672</b>	<b>\$133,366</b>	<b>\$144,038</b>	<b>\$145,314</b>	<b>\$215,516</b>
<b>TOTAL Federal, State, &amp; Institution-Based Aid</b>	<b>\$584,391</b>	<b>\$633,531</b>	<b>\$677,876</b>	<b>\$676,538</b>	<b>\$655,840</b>	<b>\$609,147</b>	<b>\$701,484</b>	<b>\$833,157</b>	<b>\$910,795</b>	<b>\$1,019,978</b>
NOTES: Constant dollars are inflation-adjusted to the 2003-04 academic year. For an explanation of this conversion, see the final section of this report entitled "Notes and Sources."										
For annual and cumulative percentage changes, see Appendix A, Table F.										

**TABLE 4**  
**Aid Awarded to Students at Private California Institutions**  
**In Current Dollars (In Thousands)**

**Independent Nonprofit Institutions**

Programs	1994-95	1995-96	1996-97	1997-98	1998-99	1999-00	2000-01	2001-02	2002-03	2003-04
<b>Federally Supported Aid</b>										
Pell Grants	\$61,264	\$66,194	\$70,256	\$74,357	\$87,203	\$86,730	\$93,319	\$110,855	\$118,048	\$122,867
Campus-Based Aid										
SEOG	\$13,750	\$12,222	\$12,466	\$12,693	\$17,062	\$17,301	\$16,288	\$19,030	\$18,894	\$19,882
Federal Work-Study	\$13,952	\$12,675	\$12,929	\$13,171	\$28,568	\$37,574	\$33,367	\$37,580	\$35,819	\$35,948
Perkins Loans	\$7,816	\$7,119	\$7,261	\$7,291	\$7,820	\$6,007	\$5,337	\$5,354	\$4,066	\$4,237
LEAP/SLEAP	\$3,389	\$2,847	\$1,487	\$2,619	\$1,382	\$910	\$2,302	\$2,653	\$2,952	\$3,621
FFELP/FDLP Loans										
Subsidized Stafford	\$601,106	\$619,202	\$668,776	\$680,248	\$680,786	\$710,970	\$689,380	\$712,390	\$776,026	\$813,318
Unsubsidized Stafford	\$444,467	\$486,078	\$574,453	\$632,937	\$679,710	\$751,228	\$754,112	\$801,756	\$894,015	\$951,512
PLUS	\$75,096	\$89,519	\$100,890	\$109,628	\$113,728	\$135,339	\$145,210	\$161,181	\$179,377	\$239,588
Other Grants	\$1,469	\$1,220	\$947	\$951	\$1,167	\$1,198	\$1,272	-	-	-
Other Loans	\$1,282	\$0	\$0	\$0	\$0	\$0	\$0	\$0	\$0	\$0
<b>Total Federal Aid</b>	<b>\$1,223,591</b>	<b>\$1,297,076</b>	<b>\$1,449,465</b>	<b>\$1,533,895</b>	<b>\$1,617,426</b>	<b>\$1,747,257</b>	<b>\$1,740,587</b>	<b>\$1,850,799</b>	<b>\$2,029,197</b>	<b>\$2,190,973</b>
<b>State-Administered Aid</b>										
Cal Grant A	\$59,861	\$60,836	\$73,318	\$84,601	\$110,474	\$136,891	\$171,573	\$174,420	\$155,267	\$148,225
Cal Grant B	\$7,202	\$6,146	\$5,514	\$6,322	\$8,383	\$10,394	\$11,391	\$20,640	\$33,690	\$43,148
Cal Grant C	\$349	\$342	\$660	\$502	\$616	\$1,089	\$2,026	\$2,518	\$1,961	\$1,539
Cal Grant T	\$0	\$0	\$0	\$0	\$5,664	\$6,480	\$5,937	\$6,606	\$4,905	\$608
Graduate Fellowships	\$2,654	\$2,354	\$2,676	\$2,691	\$1,751	\$853	\$100	\$0	\$0	\$0
State Work-Study	\$106	\$98	\$98	\$98	\$104	\$160	\$361	\$0	\$0	\$0
<b>Total State Aid</b>	<b>\$70,172</b>	<b>\$69,776</b>	<b>\$82,266</b>	<b>\$94,214</b>	<b>\$126,992</b>	<b>\$155,867</b>	<b>\$191,388</b>	<b>\$204,185</b>	<b>\$195,824</b>	<b>\$193,519</b>
<b>Institution-Based Aid</b>	<b>\$436,747</b>	<b>\$464,441</b>	<b>\$487,663</b>	<b>\$499,274</b>	<b>\$610,000</b>	<b>\$671,000</b>	<b>\$762,338</b>	<b>\$854,120</b>	<b>\$936,253</b>	<b>\$1,049,823</b>
<b>TOTAL Federal, State, &amp; Institution-Based Aid</b>	<b>\$1,730,510</b>	<b>\$1,831,293</b>	<b>\$2,019,394</b>	<b>\$2,127,383</b>	<b>\$2,354,418</b>	<b>\$2,574,124</b>	<b>\$2,694,312</b>	<b>\$2,909,104</b>	<b>\$3,161,274</b>	<b>\$3,434,315</b>

NOTES: Institution-Based Aid includes aid from private sources, in addition to awards from an institution's own funds.

See Table 2 for notes on federal and state aid programs.

Federal "Other Grants" data were not available for 2001-02 forward.

<b>TABLE 4a</b>										
<b>Aid Awarded to Students at Private California Institutions</b>										
<i>In Constant Dollars (In Thousands)</i>										
<b>Independent Nonprofit Institutions</b>										
Programs	1994-95	1995-96	1996-97	1997-98	1998-99	1999-00	2000-01	2001-02	2002-03	2003-04
<b>Federally Supported Aid</b>										
Pell Grants	\$75,798	\$79,729	\$82,274	\$85,551	\$98,729	\$95,374	\$99,173	\$115,770	\$120,597	\$122,867
<b>Campus-Based Aid</b>										
SEOG	\$17,012	\$14,721	\$14,598	\$14,604	\$19,317	\$19,025	\$17,310	\$19,874	\$19,302	\$19,882
Federal Work-Study	\$17,262	\$15,267	\$15,141	\$15,154	\$32,344	\$41,319	\$35,460	\$39,246	\$36,592	\$35,948
Perkins Loans	\$9,670	\$8,575	\$8,503	\$8,389	\$8,854	\$6,606	\$5,672	\$5,591	\$4,154	\$4,237
LEAP/SLEAP	\$4,193	\$3,429	\$1,741	\$3,013	\$1,565	\$1,001	\$2,446	\$2,771	\$3,016	\$3,621
<b>FFELP/FDLP Loans</b>										
Subsidized Stafford	\$743,714	\$745,814	\$783,179	\$782,658	\$770,768	\$781,832	\$732,620	\$743,973	\$792,783	\$813,318
Unsubsidized Stafford	\$549,914	\$585,470	\$672,721	\$728,225	\$769,550	\$826,103	\$801,413	\$837,301	\$913,319	\$951,512
PLUS	\$92,912	\$107,824	\$118,149	\$126,132	\$128,760	\$148,828	\$154,318	\$168,327	\$183,250	\$239,588
Other Grants	\$1,818	\$1,469	\$1,109	\$1,094	\$1,321	\$1,317	\$1,351	-	-	-
Other Loans	\$1,586	\$0	\$0	\$0	\$0	\$0	\$0	\$0	\$0	\$0
<b>Total Federal Aid</b>	<b>\$1,513,879</b>	<b>\$1,562,298</b>	<b>\$1,697,415</b>	<b>\$1,764,821</b>	<b>\$1,831,208</b>	<b>\$1,921,406</b>	<b>\$1,849,762</b>	<b>\$1,932,853</b>	<b>\$2,073,013</b>	<b>\$2,190,973</b>
<b>State-Administered Aid</b>										
Cal Grant A	\$74,063	\$73,276	\$85,860	\$97,338	\$125,076	\$150,535	\$182,335	\$182,153	\$158,620	\$148,225
Cal Grant B	\$8,911	\$7,403	\$6,457	\$7,274	\$9,491	\$11,430	\$12,105	\$21,555	\$34,418	\$43,148
Cal Grant C	\$432	\$412	\$773	\$578	\$697	\$1,198	\$2,153	\$2,630	\$2,004	\$1,539
Cal Grant T	\$0	\$0	\$0	\$0	\$6,413	\$7,126	\$6,309	\$6,899	\$5,011	\$608
Graduate Fellowships	\$3,284	\$2,835	\$3,134	\$3,096	\$1,982	\$938	\$106	\$0	\$0	\$0
State Work-Study	\$131	\$118	\$115	\$113	\$118	\$176	\$384	\$0	\$0	\$0
<b>Total State Aid</b>	<b>\$86,820</b>	<b>\$84,044</b>	<b>\$96,339</b>	<b>\$108,398</b>	<b>\$143,777</b>	<b>\$171,402</b>	<b>\$203,392</b>	<b>\$213,237</b>	<b>\$200,052</b>	<b>\$193,519</b>
<b>Institution-Based Aid</b>	<b>\$540,362</b>	<b>\$559,408</b>	<b>\$571,084</b>	<b>\$574,439</b>	<b>\$690,626</b>	<b>\$737,879</b>	<b>\$810,154</b>	<b>\$891,987</b>	<b>\$956,469</b>	<b>\$1,049,823</b>
<b>TOTAL Federal, State, &amp; Institution-Based Aid</b>	<b>\$2,141,061</b>	<b>\$2,205,750</b>	<b>\$2,364,838</b>	<b>\$2,447,658</b>	<b>\$2,665,611</b>	<b>\$2,830,687</b>	<b>\$2,863,308</b>	<b>\$3,038,077</b>	<b>\$3,229,535</b>	<b>\$3,434,315</b>
NOTES: Constant dollars are inflation-adjusted to the 2003-04 academic year. For an explanation of this conversion, see the final section of this report entitled "Notes and Sources."										
For annual and cumulative percentage changes, see Appendix A, Table G.										

**TABLE 4.1**  
**Aid Awarded to Students at Private California Institutions**  
**In Current Dollars (In Thousands)**

**Proprietary and Specialty Institutions**

Programs	1994-95	1995-96	1996-97	1997-98	1998-99	1999-00	2000-01	2001-02	2002-03	2003-04
<b>Federally Supported Aid</b>										
Pell Grants	\$120,691	\$105,864	\$105,864	\$104,073	\$115,074	\$128,991	\$146,676	\$182,634	\$194,176	\$228,527
<b>Campus-Based Aid</b>										
SEOG	\$12,183	\$11,244	\$9,003	\$8,652	\$9,472	\$9,656	\$7,478	\$9,355	\$13,236	\$14,960
Federal Work-Study	\$3,701	\$3,297	\$2,639	\$5,000	\$4,945	\$4,929	\$4,245	\$6,082	\$5,389	\$5,923
Perkins Loans	\$1,197	\$1,389	\$685	\$1,855	\$814	\$610	\$525	\$505	\$3,529	\$3,934
LEAP/SLEAP	\$357	\$292	\$177	\$251	\$114	\$100	\$674	\$1,346	\$2,932	\$3,621
<b>FFELP/FDLP Loans</b>										
Subsidized Stafford	\$184,703	\$195,232	\$210,753	\$217,782	\$237,949	\$260,955	\$273,553	\$285,411	\$287,638	\$348,648
Unsubsidized Stafford	\$134,358	\$162,124	\$190,675	\$208,664	\$226,541	\$260,154	\$273,667	\$280,667	\$292,023	\$352,624
PLUS	\$40,354	\$44,724	\$51,428	\$62,369	\$76,220	\$94,302	\$119,136	\$138,698	\$159,139	\$237,548
Other Grants	\$0	\$0	\$0	\$0	\$0	\$0	\$0	\$0	\$0	\$0
Other Loans	\$3,167	\$0	\$0	\$0	\$0	\$0	\$0	\$0	\$0	\$0
<b>Total Federal Aid</b>	<b>\$500,711</b>	<b>\$524,166</b>	<b>\$571,224</b>	<b>\$608,646</b>	<b>\$671,129</b>	<b>\$759,697</b>	<b>\$825,953</b>	<b>\$904,699</b>	<b>\$958,062</b>	<b>\$1,195,785</b>
<b>State-Administered Aid</b>										
Cal Grant A	\$5,076	\$4,624	\$6,456	\$10,915	\$9,843	\$15,007	\$27,205	\$18,731	\$17,799	\$21,101
Cal Grant B	\$829	\$985	\$1,073	\$1,904	\$2,282	\$3,082	\$4,145	\$11,968	\$22,869	\$30,380
Cal Grant C	\$681	\$609	\$1,483	\$1,703	\$1,803	\$2,549	\$4,705	\$6,073	\$5,111	\$5,257
Cal Grant T	\$0	\$0	\$0	\$0	\$0	\$0	\$0	\$0	\$259	\$0
Other Grants	\$0	\$0	\$0	\$0	\$0	\$0	\$0	\$0	\$0	\$0
State Work-Study	\$38	\$27	\$39	\$44	\$20	\$23	\$64	\$83	\$7	\$0
<b>Total State Aid</b>	<b>\$6,624</b>	<b>\$6,245</b>	<b>\$9,051</b>	<b>\$14,566</b>	<b>\$13,948</b>	<b>\$20,661</b>	<b>\$36,119</b>	<b>\$36,855</b>	<b>\$46,044</b>	<b>\$56,737</b>
<b>Institution-Based Aid</b>	<b>N/A</b>	<b>N/A</b>	<b>N/A</b>	<b>N/A</b>	<b>N/A</b>	<b>N/A</b>	<b>N/A</b>	<b>N/A</b>	<b>N/A</b>	<b>N/A</b>
<b>TOTAL Federal, State, &amp; Institution-Based Aid</b>	<b>\$507,335</b>	<b>\$530,411</b>	<b>\$580,275</b>	<b>\$623,212</b>	<b>\$685,077</b>	<b>\$780,358</b>	<b>\$862,072</b>	<b>\$941,554</b>	<b>\$1,004,106</b>	<b>\$1,252,522</b>

NOTES: Reliable information on institutional aid in the proprietary and specialty sector was unavailable.  
Pell Grant amounts for 1992-93, 1993-94, 1995-96, and 1996-97 are estimates.  
See Table 2 for notes on federal and state aid programs.

<b>TABLE 4.1a</b>										
<b>Aid Awarded to Students at Private California Institutions</b>										
<i>In Constant Dollars (In Thousands)</i>										
Proprietary and Specialty Institutions										
Programs	1994-95	1995-96	1996-97	1997-98	1998-99	1999-00	2000-01	2001-02	2002-03	2003-04
<b>Federally Supported Aid</b>										
Pell Grants	\$149,324	\$127,511	\$123,973	\$119,741	\$130,284	\$141,848	\$155,876	\$190,731	\$198,369	\$228,527
<b>Campus-Based Aid</b>										
SEOG	\$15,073	\$13,543	\$10,543	\$9,955	\$10,724	\$10,618	\$7,948	\$9,769	\$13,522	\$14,960
Federal Work-Study	\$4,579	\$3,971	\$3,090	\$5,753	\$5,599	\$5,420	\$4,512	\$6,352	\$5,505	\$5,923
Perkins Loans	\$1,481	\$1,673	\$802	\$2,134	\$922	\$671	\$557	\$528	\$3,605	\$3,934
LEAP/SLEAP	\$442	\$352	\$207	\$289	\$129	\$110	\$716	\$1,405	\$2,995	\$3,621
<b>FFELP/FDLP Loans</b>										
Subsidized Stafford	\$228,523	\$235,152	\$246,805	\$250,569	\$269,400	\$286,964	\$290,711	\$298,065	\$293,849	\$348,648
Unsubsidized Stafford	\$166,234	\$195,275	\$223,292	\$240,078	\$256,484	\$286,084	\$290,832	\$293,110	\$298,329	\$352,624
PLUS	\$49,928	\$53,869	\$60,225	\$71,759	\$86,294	\$103,701	\$126,608	\$144,847	\$162,575	\$237,548
Other Grants	\$0	\$0	\$0	\$0	\$0	\$0	\$0	\$0	\$0	\$0
Other Loans	\$3,918	\$0	\$0	\$0	\$0	\$0	\$0	\$0	\$0	\$0
<b>Total Federal Aid</b>	<b>\$619,501</b>	<b>\$631,346</b>	<b>\$668,939</b>	<b>\$700,277</b>	<b>\$759,835</b>	<b>\$835,416</b>	<b>\$877,760</b>	<b>\$944,808</b>	<b>\$978,750</b>	<b>\$1,195,785</b>
<b>State-Administered Aid</b>										
Cal Grant A	\$6,280	\$5,570	\$7,560	\$12,558	\$11,144	\$16,503	\$28,911	\$19,562	\$18,184	\$21,101
Cal Grant B	\$1,026	\$1,186	\$1,257	\$2,191	\$2,584	\$3,389	\$4,405	\$12,499	\$23,362	\$30,380
Cal Grant C	\$843	\$734	\$1,737	\$1,959	\$2,041	\$2,803	\$5,000	\$6,342	\$5,221	\$5,257
Cal Grant T	\$0	\$0	\$0	\$0	\$0	\$0	\$0	\$0	\$264	\$0
Other Grants	\$0	\$0	\$0	\$0	\$0	\$0	\$0	\$0	\$0	\$0
State Work-Study	\$47	\$33	\$46	\$51	\$23	\$25	\$68	\$87	\$7	\$0
<b>Total State Aid</b>	<b>\$8,195</b>	<b>\$7,522</b>	<b>\$10,599</b>	<b>\$16,759</b>	<b>\$15,792</b>	<b>\$22,720</b>	<b>\$38,384</b>	<b>\$38,489</b>	<b>\$47,038</b>	<b>\$56,737</b>
<b>Institution-Based Aid</b>	<b>N/A</b>	<b>N/A</b>	<b>N/A</b>	<b>N/A</b>	<b>N/A</b>	<b>N/A</b>	<b>N/A</b>	<b>N/A</b>	<b>N/A</b>	<b>N/A</b>
<b>TOTAL Federal, State, &amp; Institution-Based Aid</b>	<b>\$627,697</b>	<b>\$638,868</b>	<b>\$679,539</b>	<b>\$717,036</b>	<b>\$775,626</b>	<b>\$858,136</b>	<b>\$916,144</b>	<b>\$983,297</b>	<b>\$1,025,788</b>	<b>\$1,252,522</b>
NOTES: Constant dollars are inflation-adjusted to the 2003-04 academic year. For an explanation of this conversion, see the final section of this report entitled "Notes and Sources."										
For annual and cumulative percentage changes, see Appendix A, Table H.										

**TABLE 5**  
**Volume of the Largest Generally Available Aid Programs by Sector**  
**In Current Dollars (In Thousands)**

Program & Sector	1994-95	1995-96	1996-97	1997-98	1998-99	1999-00	2000-01	2001-02	2002-03	2003-04
<b>TOTAL AID</b>										
Public Institutions: UC	\$844,948	\$939,562	\$1,010,151	\$1,059,837	\$1,094,621	\$1,125,817	\$1,203,019	\$1,349,581	\$1,491,834	\$1,769,476
CSU	\$725,241	\$864,739	\$979,074	\$1,078,243	\$1,119,882	\$1,121,496	\$1,170,599	\$1,282,404	\$1,401,183	\$1,577,029
CCC	\$472,333	\$525,980	\$578,855	\$588,013	\$579,275	\$553,936	\$660,082	\$797,787	\$891,544	\$1,019,978
Total Public Institutions	\$2,042,522	\$2,330,281	\$2,568,080	\$2,726,093	\$2,793,778	\$2,801,249	\$3,033,700	\$3,429,772	\$3,784,561	\$4,366,483
Independent Institutions	\$1,730,510	\$1,831,293	\$2,019,394	\$2,127,383	\$2,354,418	\$2,574,124	\$2,694,312	\$2,909,104	\$3,161,274	\$3,434,315
Proprietary Institutions	\$507,335	\$530,411	\$580,275	\$623,212	\$685,077	\$780,358	\$862,072	\$941,554	\$1,004,106	\$1,252,522
<b>Total</b>	<b>\$4,280,367</b>	<b>\$4,691,985</b>	<b>\$5,167,749</b>	<b>\$5,476,688</b>	<b>\$5,833,273</b>	<b>\$6,155,731</b>	<b>\$6,590,084</b>	<b>\$7,280,430</b>	<b>\$7,949,941</b>	<b>\$9,053,320</b>
<b>Pell Grant</b>										
Public Institutions: UC	\$63,620	\$69,512	\$76,499	\$84,048	\$95,241	\$95,190	\$101,486	\$122,868	\$141,112	\$149,419
CSU	\$130,301	\$148,597	\$169,309	\$192,652	\$224,200	\$224,842	\$245,889	\$294,256	\$316,080	\$321,400
CCC	\$236,901	\$260,178	\$295,223	\$300,000	\$343,171	\$335,414	\$386,520	\$477,550	\$533,721	\$566,248
Total Public Institutions	\$430,822	\$478,287	\$541,031	\$576,700	\$662,612	\$655,446	\$733,895	\$894,674	\$990,913	\$1,037,067
Independent Institutions	\$61,264	\$66,194	\$70,256	\$74,357	\$87,203	\$86,730	\$93,319	\$110,855	\$118,048	\$122,867
Proprietary Institutions	\$120,691	\$105,864	\$105,864	\$104,073	\$115,074	\$128,991	\$146,676	\$182,634	\$194,176	\$228,527
<b>Total</b>	<b>\$612,777</b>	<b>\$650,345</b>	<b>\$717,151</b>	<b>\$755,130</b>	<b>\$864,889</b>	<b>\$871,167</b>	<b>\$973,890</b>	<b>\$1,188,163</b>	<b>\$1,303,137</b>	<b>\$1,388,460</b>
<b>Stafford Subsidized Loan</b>										
Public Institutions: UC	\$242,869	\$270,489	\$282,162	\$282,800	\$272,898	\$260,307	\$257,322	\$273,954	\$299,920	\$331,489
CSU	\$304,544	\$382,910	\$437,263	\$455,963	\$443,863	\$415,780	\$398,409	\$405,324	\$447,336	\$472,621
CCC	\$68,373	\$78,229	\$74,804	\$78,229	\$43,483	\$40,041	\$52,465	\$56,867	\$64,409	\$74,368
Total Public Institutions	\$615,786	\$731,628	\$794,229	\$816,992	\$760,244	\$716,128	\$708,196	\$736,145	\$811,665	\$878,478
Independent Institutions	\$601,106	\$619,202	\$668,776	\$680,248	\$680,786	\$710,970	\$689,380	\$712,390	\$776,026	\$813,318
Proprietary Institutions	\$184,703	\$195,232	\$210,753	\$217,782	\$237,949	\$260,955	\$273,553	\$285,411	\$287,638	\$348,648
<b>Total</b>	<b>\$1,401,595</b>	<b>\$1,546,062</b>	<b>\$1,673,758</b>	<b>\$1,715,022</b>	<b>\$1,678,979</b>	<b>\$1,688,053</b>	<b>\$1,671,129</b>	<b>\$1,733,946</b>	<b>\$1,875,329</b>	<b>\$2,040,444</b>
<b>Stafford Unsubsidized Loan</b>										
Public Institutions: UC	\$73,056	\$86,594	\$106,418	\$119,910	\$120,274	\$131,378	\$141,944	\$154,924	\$172,487	\$195,363
CSU	\$70,610	\$103,299	\$131,022	\$166,015	\$165,775	\$185,174	\$189,531	\$212,072	\$241,838	\$253,368
CCC	\$15,077	\$24,551	\$27,538	\$24,552	\$12,763	\$12,571	\$16,509	\$20,255	\$30,075	\$35,127
Total Public Institutions	\$158,743	\$214,444	\$264,978	\$310,477	\$298,812	\$329,123	\$347,984	\$387,251	\$444,400	\$483,858
Independent Institutions	\$444,467	\$486,078	\$574,453	\$632,937	\$679,710	\$751,228	\$754,112	\$801,756	\$894,015	\$951,512
Proprietary Institutions	\$134,358	\$162,124	\$190,675	\$208,664	\$226,541	\$260,154	\$273,667	\$280,667	\$292,023	\$352,624
<b>Total</b>	<b>\$737,568</b>	<b>\$862,646</b>	<b>\$1,030,106</b>	<b>\$1,152,078</b>	<b>\$1,205,063</b>	<b>\$1,340,505</b>	<b>\$1,375,763</b>	<b>\$1,469,674</b>	<b>\$1,630,438</b>	<b>\$1,787,994</b>
<b>Campus-Based Programs</b>										
Public Institutions: UC	\$53,670	\$53,485	\$51,356	\$57,236	\$59,432	\$58,275	\$59,019	\$72,327	\$86,016	\$79,705
CSU	\$40,269	\$38,628	\$38,519	\$42,350	\$43,253	\$46,314	\$46,361	\$51,254	\$51,776	\$49,407
CCC	\$32,117	\$35,034	\$43,754	\$43,754	\$44,799	\$43,422	\$48,277	\$54,220	\$56,990	\$58,367
Total Public Institutions	\$126,056	\$127,147	\$133,629	\$143,340	\$147,484	\$148,011	\$153,657	\$177,801	\$194,782	\$187,479
Independent Institutions	\$35,518	\$32,016	\$32,656	\$33,155	\$53,450	\$60,882	\$54,992	\$61,964	\$58,779	\$60,067
Proprietary Institutions	\$17,081	\$15,930	\$12,327	\$15,507	\$15,231	\$15,195	\$12,248	\$15,942	\$22,154	\$24,818
<b>Total</b>	<b>\$178,655</b>	<b>\$175,093</b>	<b>\$178,612</b>	<b>\$192,002</b>	<b>\$216,165</b>	<b>\$224,088</b>	<b>\$220,897</b>	<b>\$255,707</b>	<b>\$275,715</b>	<b>\$272,364</b>
<b>Cal Grants A/B/C/T</b>										
Public Institutions: UC	\$94,243	\$100,448	\$107,026	\$109,555	\$111,282	\$112,995	\$125,494	\$135,606	\$141,816	\$201,465
CSU	\$34,755	\$35,688	\$40,533	\$43,808	\$51,236	\$54,948	\$66,595	\$82,929	\$93,409	\$126,590
CCC	\$15,479	\$16,142	\$17,621	\$19,008	\$19,741	\$19,658	\$27,032	\$43,991	\$56,722	\$64,305
Total Public Institutions	\$144,477	\$152,278	\$165,180	\$172,371	\$182,259	\$187,601	\$219,121	\$262,526	\$291,947	\$392,361
Independent Institutions	\$67,412	\$67,324	\$79,492	\$91,425	\$125,137	\$154,854	\$190,927	\$204,185	\$195,824	\$193,519
Proprietary Institutions	\$6,586	\$6,218	\$9,012	\$14,522	\$13,928	\$20,638	\$36,055	\$36,772	\$46,037	\$56,737
<b>Total</b>	<b>\$218,475</b>	<b>\$225,820</b>	<b>\$253,684</b>	<b>\$278,318</b>	<b>\$321,324</b>	<b>\$363,093</b>	<b>\$446,103</b>	<b>\$503,483</b>	<b>\$533,807</b>	<b>\$642,617</b>

NOTES: Data derived from Table Series 3 and 4.

**TABLE 5a**  
**Volume of the Largest Generally Available Aid Programs by Sector**  
*In Constant Dollars (In Thousands)*

Program & Sector	1994-95	1995-96	1996-97	1997-98	1998-99	1999-00	2000-01	2001-02	2002-03	2003-04
<b>TOTAL AID</b>										
Public Institutions: UC	\$1,045,406	\$1,131,681	\$1,182,950	\$1,219,394	\$1,239,302	\$1,238,027	\$1,278,476	\$1,409,414	\$1,524,047	\$1,769,476
CSU	\$897,299	\$1,041,558	\$1,146,557	\$1,240,571	\$1,267,901	\$1,233,276	\$1,244,023	\$1,339,258	\$1,431,439	\$1,577,029
CCC	\$584,391	\$633,531	\$677,876	\$676,538	\$655,840	\$609,147	\$701,484	\$833,157	\$910,795	\$1,019,978
Total Public Institutions	\$2,527,096	\$2,806,769	\$3,007,383	\$3,136,503	\$3,163,043	\$3,080,449	\$3,223,983	\$3,581,829	\$3,866,281	\$4,366,483
Independent Institutions	\$2,141,061	\$2,205,750	\$2,364,838	\$2,447,658	\$2,665,611	\$2,830,687	\$2,863,308	\$3,038,077	\$3,229,535	\$3,434,315
Proprietary Institutions	\$627,697	\$638,868	\$679,539	\$717,036	\$775,626	\$858,136	\$916,144	\$983,297	\$1,025,788	\$1,252,522
<b>Total</b>	<b>\$5,295,854</b>	<b>\$5,651,387</b>	<b>\$6,051,760</b>	<b>\$6,301,197</b>	<b>\$6,604,280</b>	<b>\$6,769,273</b>	<b>\$7,003,434</b>	<b>\$7,603,203</b>	<b>\$8,121,604</b>	<b>\$9,053,320</b>
<b>Pell Grant</b>										
Public Institutions: UC	\$78,713	\$83,726	\$89,585	\$96,701	\$107,829	\$104,678	\$107,852	\$128,315	\$144,159	\$149,419
CSU	\$161,214	\$178,982	\$198,272	\$221,656	\$253,833	\$247,252	\$261,312	\$307,302	\$322,905	\$321,400
CCC	\$293,104	\$313,378	\$345,725	\$345,165	\$388,529	\$368,845	\$410,764	\$498,722	\$545,246	\$566,248
Total Public Institutions	\$533,032	\$576,086	\$633,581	\$663,521	\$750,192	\$720,774	\$779,927	\$934,339	\$1,012,310	\$1,037,067
Independent Institutions	\$75,798	\$79,729	\$82,274	\$85,551	\$98,729	\$95,374	\$99,173	\$115,770	\$120,597	\$122,867
Proprietary Institutions	\$149,324	\$127,511	\$123,973	\$119,741	\$130,284	\$141,848	\$155,876	\$190,731	\$198,369	\$228,527
<b>Total</b>	<b>\$758,154</b>	<b>\$783,325</b>	<b>\$839,829</b>	<b>\$868,814</b>	<b>\$979,205</b>	<b>\$957,996</b>	<b>\$1,034,976</b>	<b>\$1,240,840</b>	<b>\$1,331,276</b>	<b>\$1,388,460</b>
<b>Stafford Subsidized Loan</b>										
Public Institutions: UC	\$300,488	\$325,798	\$330,429	\$325,375	\$308,968	\$286,252	\$273,462	\$286,100	\$306,396	\$331,489
CSU	\$376,795	\$461,206	\$512,063	\$524,608	\$502,530	\$457,221	\$423,398	\$423,294	\$456,995	\$472,621
CCC	\$84,594	\$94,225	\$87,600	\$90,006	\$49,230	\$44,032	\$55,756	\$59,388	\$65,800	\$74,368
Total Public Institutions	\$761,877	\$881,229	\$930,092	\$939,989	\$860,728	\$787,505	\$752,617	\$768,781	\$829,191	\$878,478
Independent Institutions	\$743,714	\$745,814	\$783,179	\$782,658	\$770,768	\$781,832	\$732,620	\$743,973	\$792,783	\$813,318
Proprietary Institutions	\$228,523	\$235,152	\$246,805	\$250,569	\$269,400	\$286,964	\$290,711	\$298,065	\$293,849	\$348,648
<b>Total</b>	<b>\$1,734,114</b>	<b>\$1,862,196</b>	<b>\$1,960,076</b>	<b>\$1,973,216</b>	<b>\$1,900,896</b>	<b>\$1,856,301</b>	<b>\$1,775,948</b>	<b>\$1,810,819</b>	<b>\$1,915,823</b>	<b>\$2,040,444</b>
<b>Stafford Unsubsidized Loan</b>										
Public Institutions: UC	\$90,388	\$104,300	\$124,622	\$137,962	\$136,171	\$144,472	\$150,847	\$161,792	\$176,212	\$195,363
CSU	\$87,362	\$124,421	\$153,435	\$191,008	\$187,686	\$203,630	\$201,419	\$221,474	\$247,060	\$253,368
CCC	\$18,654	\$29,571	\$32,249	\$28,248	\$14,450	\$13,824	\$17,544	\$21,153	\$30,724	\$35,127
Total Public Institutions	\$196,404	\$258,293	\$310,306	\$357,219	\$338,307	\$361,927	\$369,811	\$404,419	\$453,996	\$483,858
Independent Institutions	\$549,914	\$585,470	\$672,721	\$728,225	\$769,550	\$826,103	\$801,413	\$837,301	\$913,319	\$951,512
Proprietary Institutions	\$166,234	\$195,275	\$223,292	\$240,078	\$256,484	\$286,084	\$290,832	\$293,110	\$298,329	\$352,624
<b>Total</b>	<b>\$912,551</b>	<b>\$1,039,037</b>	<b>\$1,206,319</b>	<b>\$1,325,522</b>	<b>\$1,364,341</b>	<b>\$1,474,113</b>	<b>\$1,462,055</b>	<b>\$1,534,831</b>	<b>\$1,665,644</b>	<b>\$1,787,994</b>
<b>Campus-Based Programs</b>										
Public Institutions: UC	\$66,403	\$64,421	\$60,141	\$65,853	\$67,287	\$64,083	\$62,721	\$75,534	\$87,873	\$79,705
CSU	\$49,823	\$46,527	\$45,108	\$48,726	\$48,970	\$50,930	\$49,269	\$53,526	\$52,894	\$49,407
CCC	\$39,737	\$42,198	\$51,239	\$50,341	\$50,720	\$47,750	\$51,305	\$56,624	\$58,221	\$58,367
Total Public Institutions	\$155,962	\$153,146	\$156,488	\$164,920	\$166,978	\$162,763	\$163,295	\$185,684	\$198,988	\$187,479
Independent Institutions	\$43,944	\$38,563	\$38,242	\$38,146	\$60,515	\$66,950	\$58,441	\$64,711	\$60,048	\$60,067
Proprietary Institutions	\$21,133	\$19,187	\$14,436	\$17,842	\$17,244	\$16,709	\$13,017	\$16,649	\$22,632	\$24,818
<b>Total</b>	<b>\$221,040</b>	<b>\$210,895</b>	<b>\$209,166</b>	<b>\$220,908</b>	<b>\$244,736</b>	<b>\$246,423</b>	<b>\$234,753</b>	<b>\$267,044</b>	<b>\$281,669</b>	<b>\$272,364</b>
<b>Cal Grants A/B/C/T</b>										
Public Institutions: UC	\$116,601	\$120,987	\$125,334	\$126,048	\$125,991	\$124,257	\$133,365	\$141,618	\$144,878	\$201,465
CSU	\$43,000	\$42,985	\$47,467	\$50,403	\$58,008	\$60,425	\$70,772	\$86,606	\$95,426	\$126,590
CCC	\$19,151	\$19,443	\$20,635	\$21,870	\$22,350	\$21,617	\$28,728	\$45,941	\$57,947	\$64,305
Total Public Institutions	\$178,753	\$183,415	\$193,436	\$198,321	\$206,349	\$206,299	\$232,865	\$274,164	\$298,251	\$392,361
Independent Institutions	\$83,405	\$81,090	\$93,090	\$105,189	\$141,677	\$170,288	\$202,903	\$213,237	\$200,052	\$193,519
Proprietary Institutions	\$8,148	\$7,489	\$10,554	\$16,708	\$15,769	\$22,695	\$38,316	\$38,403	\$47,031	\$56,737
<b>Total</b>	<b>\$270,307</b>	<b>\$271,995</b>	<b>\$297,080</b>	<b>\$320,218</b>	<b>\$363,795</b>	<b>\$399,283</b>	<b>\$474,084</b>	<b>\$525,804</b>	<b>\$545,334</b>	<b>\$642,617</b>

NOTES: Constant dollars are inflation-adjusted to the 2003-04 academic year. For an explanation of this conversion, see the final section of this report entitled "Notes and Sources." For annual and cumulative percentage changes, see Appendix A, Table I.

**TABLE 5b**  
**Percentage Distribution of Aid**  
**From the Largest Generally Available Aid Programs by Sector**

Program & Sector	1994-95	1995-96	1996-97	1997-98	1998-99	1999-00	2000-01	2001-02	2002-03	2003-04
<b>Pell Grant</b>										
Public Institutions: UC	10.4%	10.7%	10.7%	11.1%	11.0%	10.9%	10.4%	10.3%	10.8%	10.8%
CSU	21.3%	22.8%	23.6%	25.5%	25.9%	25.8%	25.2%	24.8%	24.3%	23.1%
CCC	38.7%	40.0%	41.2%	39.7%	39.7%	38.5%	39.7%	40.2%	41.0%	40.8%
Total Public Institutions	70.3%	73.5%	75.4%	76.4%	76.6%	75.2%	75.4%	75.3%	76.0%	74.7%
Independent Institutions	10.0%	10.2%	9.8%	9.8%	10.1%	10.0%	9.6%	9.3%	9.1%	8.8%
Proprietary Institutions	19.7%	16.3%	14.8%	13.8%	13.3%	14.8%	15.1%	15.4%	14.9%	16.5%
<b>Total</b>	<b>100.0%</b>	<b>100.0%</b>	<b>100.0%</b>	<b>100.0%</b>	<b>100.0%</b>	<b>100.0%</b>	<b>100.0%</b>	<b>100.0%</b>	<b>100.0%</b>	<b>100.0%</b>
<b>Stafford Subsidized Loan</b>										
Public Institutions: UC	17.3%	17.5%	16.9%	16.5%	16.3%	15.4%	15.4%	15.8%	16.0%	16.2%
CSU	21.7%	24.8%	26.1%	26.6%	26.4%	24.6%	23.8%	23.4%	23.9%	23.2%
CCC	4.9%	5.1%	4.5%	4.6%	2.6%	2.4%	3.1%	3.3%	3.4%	3.6%
Total Public Institutions	43.9%	47.3%	47.5%	47.6%	45.3%	42.4%	42.4%	42.5%	43.3%	43.1%
Independent Institutions	42.9%	40.1%	40.0%	39.7%	40.5%	42.1%	41.3%	41.1%	41.4%	39.9%
Proprietary Institutions	13.2%	12.6%	12.6%	12.7%	14.2%	15.5%	16.4%	16.5%	15.3%	17.1%
<b>Total</b>	<b>100.0%</b>	<b>100.0%</b>	<b>100.0%</b>	<b>100.0%</b>	<b>100.0%</b>	<b>100.0%</b>	<b>100.0%</b>	<b>100.0%</b>	<b>100.0%</b>	<b>100.0%</b>
<b>Stafford Unsubsidized Loan</b>										
Public Institutions: UC	9.9%	10.0%	10.3%	10.4%	10.0%	9.8%	10.3%	10.5%	10.6%	10.9%
CSU	9.6%	12.0%	12.7%	14.4%	13.8%	13.8%	13.8%	14.4%	14.8%	14.2%
CCC	2.0%	2.8%	2.7%	2.1%	1.1%	0.9%	1.2%	1.4%	1.8%	2.0%
Total Public Institutions	21.5%	24.9%	25.7%	26.9%	24.8%	24.6%	25.3%	26.3%	27.3%	27.1%
Independent Institutions	60.3%	56.3%	55.8%	54.9%	56.4%	56.0%	54.8%	54.6%	54.8%	53.2%
Proprietary Institutions	18.2%	18.8%	18.5%	18.1%	18.8%	19.4%	19.9%	19.1%	17.9%	19.7%
<b>Total</b>	<b>100.0%</b>	<b>100.0%</b>	<b>100.0%</b>	<b>100.0%</b>	<b>100.0%</b>	<b>100.0%</b>	<b>100.0%</b>	<b>100.0%</b>	<b>100.0%</b>	<b>100.0%</b>
<b>Campus-Based Programs</b>										
Public Institutions: UC	30.0%	30.5%	28.8%	29.8%	27.5%	26.0%	26.7%	28.3%	31.2%	29.3%
CSU	22.5%	22.1%	21.6%	22.1%	20.0%	20.7%	21.0%	20.0%	18.8%	18.1%
CCC	18.0%	20.0%	24.5%	22.8%	20.7%	19.4%	21.9%	21.2%	20.7%	21.4%
Total Public Institutions	70.6%	72.6%	74.8%	74.7%	68.2%	66.1%	69.6%	69.5%	70.6%	68.8%
Independent Institutions	19.9%	18.3%	18.3%	17.3%	24.7%	27.2%	24.9%	24.2%	21.3%	22.1%
Proprietary Institutions	9.6%	9.1%	6.9%	8.1%	7.0%	6.8%	5.5%	6.2%	8.0%	9.1%
<b>Total</b>	<b>100.0%</b>	<b>100.0%</b>	<b>100.0%</b>	<b>100.0%</b>	<b>100.0%</b>	<b>100.0%</b>	<b>100.0%</b>	<b>100.0%</b>	<b>100.0%</b>	<b>100.0%</b>
<b>Cal Grants A/B/C/T</b>										
Public Institutions: UC	43.1%	44.5%	42.2%	39.4%	34.6%	31.1%	28.1%	26.9%	26.6%	31.4%
CSU	15.9%	15.8%	16.0%	15.7%	15.9%	15.1%	14.9%	16.5%	17.5%	19.7%
CCC	7.1%	7.1%	6.9%	6.8%	6.1%	5.4%	6.1%	8.7%	10.6%	10.0%
Total Public Institutions	66.1%	67.4%	65.1%	61.9%	56.7%	51.7%	49.1%	52.1%	54.7%	61.1%
Independent Institutions	30.9%	29.8%	31.3%	32.8%	38.9%	42.6%	42.8%	40.6%	36.7%	30.1%
Proprietary Institutions	3.0%	2.8%	3.6%	5.2%	4.3%	5.7%	8.1%	7.3%	8.6%	8.8%
<b>Total</b>	<b>100.0%</b>	<b>100.0%</b>	<b>100.0%</b>	<b>100.0%</b>	<b>100.0%</b>	<b>100.0%</b>	<b>100.0%</b>	<b>100.0%</b>	<b>100.0%</b>	<b>100.0%</b>

NOTES: Percentage shares derived from Table 5.

**TABLE 6**  
**Number of Aid Recipients for Selected Aid Programs by Sector**

Academic Year	Pell Grant				Stafford Subsidized Loans			
	ICU	UC	CSU	CCC	ICU	UC	CSU	CCC
1994-95	38,539	37,387	78,949	158,283	104,220	57,601	77,535	27,511
1995-96	41,407	40,279	89,104	173,086	107,951	63,820	95,658	31,320
1996-97	42,007	42,219	97,040	198,213	114,567	66,750	109,480	21,920
1997-98	42,018	42,919	102,117	199,355	117,899	66,773	114,677	21,923
1998-99	44,472	43,943	107,396	186,579	117,666	66,880	112,700	17,246
1999-00	44,520	42,470	105,616	179,883	120,352	64,134	106,829	15,687
2000-01	43,514	39,565	107,648	192,331	117,410	59,276	102,163	24,346
2001-02	32,098	44,105	113,731	219,122	116,365	63,524	103,667	23,019
2002-03	32,620	49,564	116,252	239,925	125,434	69,562	109,194	26,622
2003-04	33,455	51,761	116,581	246,093	130,715	73,783	113,493	28,842
Academic Year	Cal Grants A/B/C/T				Stafford Unsubsidized Loans			
	ICU	UC	CSU	CCC	ICU	UC	CSU	CCC
1994-95	15,805	26,540	19,504	14,696	66,254	18,390	22,838	5,855
1995-96	17,088	27,978	20,068	15,036	72,237	20,449	30,150	9,238
1996-97	16,569	29,456	22,688	14,328	79,272	24,129	37,560	9,526
1997-98	17,431	29,870	24,895	16,918	84,804	26,042	45,081	10,575
1998-99	20,093	31,169	28,747	17,490	85,940	25,877	45,450	4,991
1999-00	22,820	33,007	31,644	18,927	90,817	27,500	49,503	4,712
2000-01	23,369	35,350	37,411	25,444	90,242	27,418	50,506	8,323
2001-02	27,030	37,892	41,787	40,366	93,980	29,575	54,253	7,407
2002-03	26,232	39,504	44,613	52,523	103,064	32,208	58,142	10,638
2003-04	26,551	41,757	48,157	58,089	107,396	33,260	60,113	11,878
Academic Year	Need-Based Institutional Aid				PLUS			
	ICU	UC	CSU	CCC	ICU	UC	CSU	CCC
1994-95	N/A	49,455	90,538	458,919	9,803	5,326	1,844	72
1995-96	N/A	47,678	90,505	465,806	11,244	7,312	2,685	70
1996-97	N/A	48,151	94,394	538,503	11,841	9,566	3,034	82
1997-98	N/A	48,388	98,137	559,877	12,253	10,239	4,286	111
1998-99	N/A	50,254	107,567	499,406	12,475	10,633	4,569	67
1999-00	N/A	55,123	114,418	479,619	13,546	11,267	4,699	94
2000-01	N/A	53,770	111,705	531,502	13,776	11,234	4,846	192
2001-02	N/A	56,111	104,221	595,357	13,130	12,417	5,040	118
2002-03	N/A	60,141	102,700	664,896	14,174	14,632	5,685	172
2003-04	N/A	75,336	115,738	714,294	17,774	15,864	7,411	310
Academic Year	Non-Need-Based Institutional Aid							
	ICU	UC	CSU	CCC	ICU	UC	CSU	CCC
1994-95	N/A	21,294	2,675	0				
1995-96	N/A	30,664	2,903	0				
1996-97	N/A	30,667	3,179	0				
1997-98	N/A	32,481	3,220	0				
1998-99	N/A	35,622	3,715	0				
1999-00	N/A	36,369	3,707	0				
2000-01	N/A	25,913	3,714	0				
2001-02	N/A	30,214	3,753	0				
2002-03	N/A	32,847	7,636	0				
2003-04	N/A	32,827	7,440	0				

NOTES: Unduplicated recipients are reported for each aid category.

Because the number of Direct Loan borrowers for 1998-99 and 1999-00 was unavailable from the Department of Education, data was imputed.

N/A means that information is not available.

TABLE 6.1 Volume of Selected Aid Programs by Sector In Current Dollars (In Thousands)								
Academic Year	Pell Grant				Stafford Subsidized Loans			
	ICU	UC	CSU	CCC	ICU	UC	CSU	CCC
1994-95	\$61,264	\$63,620	\$130,301	\$236,901	\$601,106	\$242,869	\$304,544	\$68,373
1995-96	\$66,194	\$69,512	\$148,597	\$260,178	\$619,202	\$270,489	\$382,910	\$78,229
1996-97	\$70,256	\$76,499	\$169,309	\$295,223	\$668,776	\$282,162	\$437,263	\$74,804
1997-98	\$74,357	\$84,048	\$192,652	\$300,000	\$680,248	\$282,800	\$455,963	\$78,229
1998-99	\$87,203	\$95,241	\$224,200	\$343,171	\$680,786	\$272,898	\$443,863	\$43,483
1999-00	\$86,730	\$95,190	\$224,842	\$335,414	\$710,970	\$260,307	\$415,780	\$40,041
2000-01	\$93,319	\$101,486	\$245,889	\$386,520	\$689,380	\$257,322	\$398,409	\$52,465
2001-02	\$110,855	\$122,868	\$294,256	\$477,550	\$712,390	\$273,954	\$405,324	\$56,867
2002-03	\$118,048	\$141,112	\$316,080	\$533,721	\$776,026	\$299,920	\$447,336	\$64,409
2003-04	\$122,867	\$149,419	\$321,400	\$566,248	\$813,318	\$331,489	\$472,621	\$74,368
Academic Year	Cal Grants A/B/C/T				Stafford Unsubsidized Loans			
	ICU	UC	CSU	CCC	ICU	UC	CSU	CCC
1994-95	\$67,412	\$94,243	\$34,755	\$15,479	\$444,467	\$73,056	\$70,610	\$15,077
1995-96	\$67,324	\$100,448	\$35,688	\$16,142	\$486,078	\$86,594	\$103,299	\$24,551
1996-97	\$79,492	\$107,026	\$40,533	\$17,621	\$574,453	\$106,418	\$131,022	\$27,538
1997-98	\$91,425	\$109,555	\$43,808	\$19,008	\$632,937	\$119,910	\$166,015	\$24,552
1998-99	\$125,137	\$111,282	\$51,236	\$19,741	\$679,710	\$120,274	\$165,775	\$12,763
1999-00	\$154,854	\$112,995	\$54,948	\$19,658	\$751,228	\$131,378	\$185,174	\$12,571
2000-01	\$190,927	\$125,494	\$66,595	\$27,032	\$754,112	\$141,944	\$189,531	\$16,509
2001-02	\$204,185	\$135,606	\$82,929	\$43,991	\$801,756	\$154,924	\$212,072	\$20,255
2002-03	\$195,824	\$141,816	\$93,409	\$56,722	\$894,015	\$172,487	\$241,838	\$30,075
2003-04	\$193,519	\$201,465	\$126,590	\$64,305	\$951,512	\$195,363	\$253,368	\$35,127
Academic Year	Need-Based Institutional Aid				PLUS			
	ICU	UC	CSU	CCC	ICU	UC	CSU	CCC
1994-95	N/A	\$137,979	\$114,747	\$103,047	\$75,096	\$28,237	\$8,203	\$265
1995-96	N/A	\$142,319	\$116,436	\$110,594	\$89,519	\$42,193	\$14,576	\$276
1996-97	N/A	\$150,256	\$122,136	\$119,143	\$100,890	\$55,775	\$16,440	\$327
1997-98	N/A	\$147,005	\$124,664	\$121,596	\$109,628	\$62,346	\$23,228	\$276
1998-99	N/A	\$159,343	\$132,893	\$113,560	\$113,728	\$66,746	\$26,165	\$283
1999-00	N/A	\$174,333	\$136,175	\$100,641	\$135,339	\$74,944	\$28,280	\$429
2000-01	N/A	\$184,325	\$132,921	\$125,495	\$145,210	\$84,532	\$30,606	\$516
2001-02	N/A	\$197,911	\$155,390	\$137,923	\$161,181	\$97,667	\$34,383	\$647
2002-03	N/A	\$205,905	\$147,066	\$142,243	\$179,377	\$113,811	\$42,163	\$960
2003-04	N/A	\$287,094	\$220,063	\$215,516	\$239,588	\$138,156	\$60,984	\$1,562
Academic Year	Non-Need-Based Institutional Aid							
	ICU	UC	CSU	CCC	ICU	UC	CSU	CCC
1994-95	N/A	\$95,929	\$8,257	\$0				
1995-96	N/A	\$128,084	\$9,155	\$0				
1996-97	N/A	\$137,327	\$10,212	\$0				
1997-98	N/A	\$149,686	\$11,064	\$0				
1998-99	N/A	\$163,730	\$12,667	\$0				
1999-00	N/A	\$132,928	\$12,998	\$0				
2000-01	N/A	\$149,072	\$13,026	\$0				
2001-02	N/A	\$173,538	\$14,832	\$0				
2002-03	N/A	\$185,869	\$24,787	\$0				
2003-04	N/A	\$208,798	\$25,626	\$0				

NOTES: For public institutions, need- and non-need-based institutional aid includes aid for graduate and undergraduate students funded by student fees, state General Fund and other institutional income. It excludes privately funded scholarship, grant, fellowship and loan programs. N/A means that information is not available.  
Data derived from Table Series 3 and 4.

**TABLE 6.2**  
**Aid Per Recipient for Selected Aid Programs by Sector**  
**In Current Dollars**

Academic Year	Pell Grant				Stafford Subsidized Loans			
	ICU	UC	CSU	CCC	ICU	UC	CSU	CCC
1994-95	\$1,590	\$1,702	\$1,650	\$1,497	\$5,768	\$4,216	\$3,928	\$2,485
1995-96	\$1,599	\$1,726	\$1,668	\$1,503	\$5,736	\$4,238	\$4,003	\$2,498
1996-97	\$1,672	\$1,812	\$1,745	\$1,489	\$5,837	\$4,227	\$3,994	\$3,413
1997-98	\$1,770	\$1,958	\$1,887	\$1,505	\$5,770	\$4,235	\$3,976	\$3,568
1998-99	\$1,961	\$2,167	\$2,088	\$1,839	\$5,786	\$4,080	\$3,938	\$2,521
1999-00	\$1,948	\$2,241	\$2,129	\$1,865	\$5,907	\$4,059	\$3,892	\$2,552
2000-01	\$2,145	\$2,565	\$2,284	\$2,010	\$5,872	\$4,341	\$3,900	\$2,155
2001-02	\$3,454	\$2,786	\$2,587	\$2,179	\$6,122	\$4,313	\$3,910	\$2,470
2002-03	\$3,619	\$2,847	\$2,719	\$2,225	\$6,187	\$4,312	\$4,097	\$2,419
2003-04	\$3,673	\$2,887	\$2,757	\$2,301	\$6,222	\$4,493	\$4,164	\$2,578
Academic Year	Cal Grants A/B/C/T				Stafford Unsubsidized Loans			
	ICU	UC	CSU	CCC	ICU	UC	CSU	CCC
1994-95	\$4,265	\$3,551	\$1,782	\$1,053	\$6,709	\$3,973	\$3,092	\$2,575
1995-96	\$3,940	\$3,590	\$1,778	\$1,074	\$6,729	\$4,235	\$3,426	\$2,658
1996-97	\$4,798	\$3,633	\$1,787	\$1,230	\$7,247	\$4,410	\$3,488	\$2,891
1997-98	\$5,245	\$3,668	\$1,760	\$1,124	\$7,464	\$4,604	\$3,683	\$2,322
1998-99	\$6,228	\$3,570	\$1,782	\$1,129	\$7,909	\$4,648	\$3,647	\$2,557
1999-00	\$6,786	\$3,423	\$1,736	\$1,039	\$8,272	\$4,777	\$3,741	\$2,668
2000-01	\$8,170	\$3,550	\$1,780	\$1,062	\$8,357	\$5,177	\$3,753	\$1,984
2001-02	\$7,554	\$3,579	\$1,985	\$1,090	\$8,531	\$5,238	\$3,909	\$2,735
2002-03	\$7,465	\$3,590	\$2,094	\$1,080	\$8,674	\$5,355	\$4,159	\$2,827
2003-04	\$7,289	\$4,825	\$2,629	\$1,107	\$8,860	\$5,874	\$4,215	\$2,957
Academic Year	Need-Based Institutional Aid				PLUS			
	ICU	UC	CSU	CCC	ICU	UC	CSU	CCC
1994-95	N/A	\$2,790	\$1,267	\$225	\$7,661	\$5,302	\$4,448	\$3,681
1995-96	N/A	\$2,985	\$1,287	\$237	\$7,961	\$5,770	\$5,429	\$3,943
1996-97	N/A	\$3,121	\$1,294	\$221	\$8,520	\$5,831	\$5,419	\$3,988
1997-98	N/A	\$3,038	\$1,270	\$217	\$8,947	\$6,089	\$5,420	\$2,486
1998-99	N/A	\$3,171	\$1,235	\$227	\$9,116	\$6,277	\$5,727	\$4,224
1999-00	N/A	\$3,163	\$1,190	\$210	\$9,991	\$6,652	\$6,018	\$4,564
2000-01	N/A	\$3,428	\$1,190	\$236	\$10,541	\$7,525	\$6,316	\$2,687
2001-02	N/A	\$3,527	\$1,491	\$232	\$12,276	\$7,866	\$6,822	\$5,483
2002-03	N/A	\$3,424	\$1,432	\$214	\$12,655	\$7,778	\$7,417	\$5,581
2003-04	N/A	\$3,811	\$1,901	\$302	\$13,480	\$8,709	\$8,229	\$5,039
Academic Year	Non-Need-Based Institutional Aid							
	ICU	UC	CSU	CCC				
1994-95	N/A	\$4,505	\$3,087	\$0				
1995-96	N/A	\$4,177	\$3,154	\$0				
1996-97	N/A	\$4,478	\$3,212	\$0				
1997-98	N/A	\$4,608	\$3,436	\$0				
1998-99	N/A	\$4,596	\$3,410	\$0				
1999-00	N/A	\$3,655	\$3,506	\$0				
2000-01	N/A	\$5,753	\$3,507	\$0				
2001-02	N/A	\$5,744	\$3,952	\$0				
2002-03	N/A	\$5,659	\$3,246	\$0				
2003-04	N/A	\$6,361	\$3,444	\$0				

NOTES: Aid per recipient is derived by dividing the number of recipients by total aid volume. Because the number of Direct Loan borrowers for 1998-99 and 1999-00 was unavailable from the Department of Education, data was imputed.

For public institutions, need- and non-need-based institutional aid includes aid for graduate and undergraduate students funded by student fees, state General Fund and other institutional income. It excludes privately funded scholarship, grant, fellowship and loan programs.

N/A means that information is not available.

**TABLE 6.2a**  
**Aid Per Recipient for Selected Aid Programs by Sector**  
*In Constant Dollars*

Academic Year	Pell Grant				Stafford Subsidized Loans			
	ICU	UC	CSU	CCC	ICU	UC	CSU	CCC
1994-95	\$1,967	\$2,105	\$2,042	\$1,852	\$7,136	\$5,217	\$4,860	\$3,075
1995-96	\$1,925	\$2,079	\$2,009	\$1,811	\$6,909	\$5,105	\$4,821	\$3,008
1996-97	\$1,959	\$2,122	\$2,043	\$1,744	\$6,836	\$4,950	\$4,677	\$3,996
1997-98	\$2,036	\$2,253	\$2,171	\$1,731	\$6,638	\$4,873	\$4,575	\$4,106
1998-99	\$2,220	\$2,454	\$2,364	\$2,082	\$6,550	\$4,620	\$4,459	\$2,855
1999-00	\$2,142	\$2,465	\$2,341	\$2,050	\$6,496	\$4,463	\$4,280	\$2,807
2000-01	\$2,279	\$2,726	\$2,427	\$2,136	\$6,240	\$4,613	\$4,144	\$2,290
2001-02	\$3,607	\$2,909	\$2,702	\$2,276	\$6,393	\$4,504	\$4,083	\$2,580
2002-03	\$3,697	\$2,909	\$2,778	\$2,273	\$6,320	\$4,405	\$4,185	\$2,472
2003-04	\$3,673	\$2,887	\$2,757	\$2,301	\$6,222	\$4,493	\$4,164	\$2,578
Academic Year	Cal Grants A/B/C/T				Stafford Unsubsidized Loans			
	ICU	UC	CSU	CCC	ICU	UC	CSU	CCC
1994-95	\$5,277	\$4,393	\$2,205	\$1,303	\$8,300	\$4,915	\$3,825	\$3,186
1995-96	\$4,745	\$4,324	\$2,142	\$1,293	\$8,105	\$5,101	\$4,127	\$3,201
1996-97	\$5,618	\$4,255	\$2,092	\$1,440	\$8,486	\$5,165	\$4,085	\$3,385
1997-98	\$6,035	\$4,220	\$2,025	\$1,293	\$8,587	\$5,298	\$4,237	\$2,671
1998-99	\$7,051	\$4,042	\$2,018	\$1,278	\$8,955	\$5,262	\$4,130	\$2,895
1999-00	\$7,462	\$3,765	\$1,910	\$1,142	\$9,096	\$5,254	\$4,113	\$2,934
2000-01	\$8,683	\$3,773	\$1,892	\$1,129	\$8,881	\$5,502	\$3,988	\$2,108
2001-02	\$7,889	\$3,737	\$2,073	\$1,138	\$8,909	\$5,471	\$4,082	\$2,856
2002-03	\$7,626	\$3,667	\$2,139	\$1,103	\$8,862	\$5,471	\$4,249	\$2,888
2003-04	\$7,289	\$4,825	\$2,629	\$1,107	\$8,860	\$5,874	\$4,215	\$2,957
Academic Year	Need-Based Institutional Aid				PLUS			
	ICU	UC	CSU	CCC	ICU	UC	CSU	CCC
1994-95	N/A	\$3,452	\$1,568	\$278	\$9,478	\$6,560	\$5,504	\$4,554
1995-96	N/A	\$3,595	\$1,550	\$286	\$9,589	\$6,950	\$6,539	\$4,749
1996-97	N/A	\$3,654	\$1,515	\$259	\$9,978	\$6,828	\$6,346	\$4,670
1997-98	N/A	\$3,495	\$1,462	\$250	\$10,294	\$7,006	\$6,235	\$2,861
1998-99	N/A	\$3,590	\$1,399	\$257	\$10,321	\$7,107	\$6,484	\$4,782
1999-00	N/A	\$3,478	\$1,309	\$231	\$10,987	\$7,315	\$6,618	\$5,019
2000-01	N/A	\$3,643	\$1,265	\$251	\$11,202	\$7,997	\$6,712	\$2,856
2001-02	N/A	\$3,684	\$1,557	\$242	\$12,820	\$8,214	\$7,124	\$5,726
2002-03	N/A	\$3,498	\$1,463	\$219	\$12,929	\$7,946	\$7,577	\$5,702
2003-04	N/A	\$3,811	\$1,901	\$302	\$13,480	\$8,709	\$8,229	\$5,039
Academic Year	Non-Need-Based Institutional Aid							
	ICU	UC	CSU	CCC				
1994-95	N/A	\$5,574	\$3,819	\$0				
1995-96	N/A	\$5,031	\$3,798	\$0				
1996-97	N/A	\$5,244	\$3,762	\$0				
1997-98	N/A	\$5,302	\$3,953	\$0				
1998-99	N/A	\$5,204	\$3,860	\$0				
1999-00	N/A	\$4,019	\$3,856	\$0				
2000-01	N/A	\$6,114	\$3,727	\$0				
2001-02	N/A	\$5,998	\$4,127	\$0				
2002-03	N/A	\$5,781	\$3,316	\$0				
2003-04	N/A	\$6,361	\$3,444	\$0				

NOTES: Constant dollars are inflation-adjusted to the 2003-04 academic year. For an explanation of this conversion, see the final section of this report entitled "Notes and Sources."

Based on Table 6.2.

**TABLE 7**  
**Public Sector Loan and Non-Loan Aid**  
**In Current and Constant Dollars, Per Full-Time Equivalent (FTE) Enrollment,**  
**And Loan Aid as a Share (Percentage) of Total Aid**

Current Dollars (In Thousands)									
Academic Year	UC			CSU			CCC		
	Loan Aid	% of Aid in Loans	Non-Loan Aid	Loan Aid	% of Aid in Loans	Non-Loan Aid	Loan Aid	% of Aid in Loans	Non-Loan Aid
1994-95	\$385,053	46%	\$459,895	\$398,928	55%	\$326,313	\$86,906	18%	\$385,406
1995-96	\$437,574	47%	\$501,988	\$518,108	60%	\$346,631	\$107,353	20%	\$418,627
1996-97	\$478,537	47%	\$531,614	\$601,711	61%	\$377,363	\$107,140	19%	\$471,715
1997-98	\$503,903	48%	\$555,934	\$662,178	61%	\$416,065	\$107,528	18%	\$480,485
1998-99	\$503,946	46%	\$590,675	\$652,660	58%	\$467,222	\$58,834	10%	\$520,441
1999-00	\$512,535	46%	\$613,282	\$648,073	58%	\$473,423	\$55,367	10%	\$498,569
2000-01	\$532,866	44%	\$670,153	\$638,180	55%	\$532,419	\$73,255	11%	\$586,827
2001-02	\$586,732	43%	\$762,849	\$674,866	53%	\$607,538	\$80,511	10%	\$717,276
2002-03	\$672,261	45%	\$819,573	\$762,573	54%	\$638,610	\$98,565	11%	\$792,979
2003-04	\$758,514	43%	\$1,010,962	\$820,745	52%	\$756,284	\$114,321	11%	\$905,657
Constant Dollars (In Thousands)									
Academic Year	UC			CSU			CCC		
	Loan Aid	% of Aid in Loans	Non-Loan Aid	Loan Aid	% of Aid in Loans	Non-Loan Aid	Loan Aid	% of Aid in Loans	Non-Loan Aid
1994-95	\$476,404	46%	\$569,002	\$493,571	55%	\$403,728	\$107,524	18%	\$476,841
1995-96	\$527,048	47%	\$604,633	\$624,049	60%	\$417,509	\$129,304	20%	\$504,227
1996-97	\$560,397	47%	\$622,553	\$704,641	61%	\$441,916	\$125,468	19%	\$552,408
1997-98	\$579,765	48%	\$639,629	\$761,868	61%	\$478,703	\$123,716	18%	\$552,821
1998-99	\$570,555	46%	\$668,747	\$738,925	58%	\$528,977	\$66,610	10%	\$589,230
1999-00	\$563,619	46%	\$674,408	\$712,666	58%	\$520,609	\$60,885	10%	\$548,261
2000-01	\$566,289	44%	\$712,187	\$678,209	55%	\$565,814	\$77,850	11%	\$623,634
2001-02	\$612,744	43%	\$796,669	\$704,786	53%	\$634,473	\$84,081	10%	\$749,076
2002-03	\$686,777	45%	\$837,270	\$779,039	54%	\$652,399	\$100,694	11%	\$810,102
2003-04	\$758,514	43%	\$1,010,962	\$820,745	52%	\$756,284	\$114,321	11%	\$905,657
Full-Time Enrollment (FTE) and Aid Per FTE in Constant Dollars									
Academic Year	UC			CSU			CCC		
	Aid Per FTE		Total Enrollment	Aid Per FTE		Total Enrollment	Aid Per FTE		Total Enrollment
	Loans	Non-Loans		Loans	Non-Loans		Loans	Non-Loans	
1994-95	\$3,133	\$3,742	152,050	\$1,997	\$1,634	247,113	\$126	\$558	854,831
1995-96	\$3,419	\$3,923	154,141	\$2,463	\$1,648	253,376	\$149	\$579	870,270
1996-97	\$3,606	\$4,006	155,387	\$2,685	\$1,684	262,428	\$139	\$612	902,839
1997-98	\$3,674	\$4,053	157,811	\$2,843	\$1,786	267,984	\$134	\$597	925,328
1998-99	\$3,535	\$4,143	161,400	\$2,698	\$1,931	273,928	\$69	\$613	961,049
1999-00	\$3,397	\$4,065	165,900	\$2,529	\$1,848	281,782	\$61	\$549	998,297
2000-01	\$3,306	\$4,158	171,270	\$2,334	\$1,947	290,554	\$75	\$599	1,041,829
2001-02	\$3,307	\$4,299	185,304	\$2,228	\$2,005	316,395	\$76	\$678	1,105,000
2002-03	\$3,501	\$4,268	196,188	\$2,351	\$1,969	331,353	\$89	\$717	1,129,645
2003-04	\$3,757	\$5,007	201,896	\$2,474	\$2,280	331,705	\$103	\$819	1,105,212

NOTES: Aid per FTE is reported to illustrate growth in aid relative to overall enrollment. CSU FTE enrollment is for college year, and it includes weighted summer quarter enrollment for campuses operating on a year-round calendar. CSU enrollment from <http://www.calstate.edu/PA/info/enroll.shtml>. UC FTE enrollment includes General Campus and Health Science enrollments from <http://budget.ucop.edu/enroll/afte.pdf>. Loan and Non-Loan Aid are based on Table Series 3 and include all federal, state and institution-based aid. See Table 6 for the number of aid recipients and aid per recipient. Constant dollars are inflation-adjusted to the 2003-04 academic year. For an explanation of this conversion, see the final section of this report entitled "Notes and Sources."

**TABLE 8**  
**State General Fund and Student Fee Revenue Expenditures**  
**On Student Aid and All Higher Education by Sector**  
**In Current Dollars (In Thousands)**

Expenditures on Student Aid										
Sector & Category	1994-95	1995-96	1996-97	1997-98	1998-99	1999-00	2000-01	2001-02	2002-03	2003-04
<b>University of California</b>										
State General Fund	\$53,743	\$62,644	\$62,260	\$60,251	\$69,228	\$85,563	\$85,563	\$69,199	\$52,199	\$52,199
Student Fee Revenue	\$122,788	\$118,056	\$133,221	\$136,176	\$143,071	\$141,301	\$148,491	\$190,501	\$235,562	\$303,455
<b>Total UC</b>	<b>\$176,531</b>	<b>\$180,700</b>	<b>\$195,481</b>	<b>\$196,427</b>	<b>\$212,299</b>	<b>\$226,864</b>	<b>\$234,054</b>	<b>\$259,700</b>	<b>\$287,761</b>	<b>\$355,654</b>
<b>California State University</b>										
State General Fund:										
State University Grants	\$33,718	\$33,718	\$33,718	\$33,718	\$40,000	\$48,285	\$48,285	\$48,285	\$33,625	\$33,625
Educational Opportunity Prg.	\$13,831	\$13,941	\$13,791	\$14,092	\$13,860	\$16,737	\$17,490	\$17,242	\$17,187	\$17,593
Graduate Equity Fellowship	\$688	\$767	\$786	\$776	\$806	\$777	\$758	\$731	\$711	\$755
Total State General Fund	\$48,237	\$48,426	\$48,295	\$48,586	\$54,666	\$65,799	\$66,533	\$66,258	\$51,523	\$51,973
Student Fee Revenue	\$60,905	\$61,672	\$66,933	\$67,861	\$66,217	\$56,382	\$65,971	\$69,916	\$81,569	\$191,059
<b>Total CSU</b>	<b>\$109,142</b>	<b>\$110,098</b>	<b>\$115,228</b>	<b>\$116,447</b>	<b>\$120,883</b>	<b>\$122,181</b>	<b>\$132,504</b>	<b>\$136,174</b>	<b>\$133,092</b>	<b>\$243,032</b>
<b>Calif. Community Colleges</b>										
State General Fund:										
Board of Govs Fee Waiver	\$74,799	\$93,307	\$97,935	\$102,684	\$95,312	\$81,816	\$90,131	\$91,853	\$102,723	\$168,138
Extended Opportunity Svcs	\$5,328	\$6,199	\$8,185	\$8,185	\$8,179	\$8,552	\$11,669	\$79,664	\$83,695	\$82,671
Total State General Fund	\$80,127	\$99,506	\$106,120	\$110,869	\$103,491	\$90,368	\$101,800	\$171,517	\$186,418	\$250,809
Student Fee Revenue	\$0	\$0	\$0	\$0	\$0	\$0	\$159,872	\$167,359	\$172,682	\$248,510
<b>Total CCC</b>	<b>\$80,127</b>	<b>\$99,506</b>	<b>\$106,120</b>	<b>\$110,869</b>	<b>\$103,491</b>	<b>\$90,368</b>	<b>\$261,672</b>	<b>\$338,876</b>	<b>\$359,100</b>	<b>\$499,319</b>
<b>Student Aid Commission</b>										
State General Fund	\$226,053	\$236,768	\$264,671	\$295,199	\$343,409	\$385,379	\$487,438	\$543,962	\$569,024	\$672,058
Total Expenditures on All Higher Education										
Category & Sector	1994-95	1995-96	1996-97	1997-98	1998-99	1999-00	2000-01	2001-02	2002-03	2003-04
<b>State General Fund</b>										
University of California	\$1,825,402	\$1,917,696	\$2,060,332	\$2,180,350	\$2,517,773	\$2,715,762	\$3,191,614	\$3,322,659	\$3,150,011	\$2,868,069
California State University	\$1,578,128	\$1,629,674	\$1,824,510	\$1,872,390	\$2,098,729	\$2,175,380	\$2,428,992	\$2,680,677	\$2,697,141	\$2,625,699
Calif. Community Colleges	\$1,342,684	\$1,600,254	\$1,872,537	\$2,108,292	\$2,259,653	\$2,553,926	\$2,796,778	\$2,846,981	\$2,879,497	\$2,404,828
<b>Student Fee Revenue</b>										
University of California	\$581,168	\$583,146	\$618,058	\$616,937	\$641,526	\$619,096	\$643,799	\$709,863	\$765,414	\$1,075,006
California State University	\$450,671	\$460,263	\$468,912	\$486,398	\$454,115	\$444,225	\$482,332	\$534,184	\$587,409	\$788,101
Calif. Community Colleges	\$174,855	\$166,894	\$163,513	\$166,493	\$160,183	\$155,204	\$156,674	\$164,056	\$169,228	\$243,539
<p>NOTES: State General Fund and student fee expenditures for student aid are not equivalent to aid awarded to students. The public sectors derive the rest of their institutional student aid funding from a combination of gifts and endowment income, private aid programs and other institutional income.</p> <p>State University Grant amounts for the California State University are estimates.</p> <p>In 1993-94, the CCC Board of Governors Grant became a fee waiver. As a result, the state discontinued direct expenditures for this program. The state does take into consideration an estimated decrease in fee revenue due to the waiver when determining the system's total operating appropriation. The figures reported here for 1993-94 through 2001-2002 represent the anticipated lost revenue for which the state compensated the community college system.</p>										

<b>TABLE 8a</b> <b>State General Fund and Student Fee Revenue Expenditures</b> <b>On Student Aid and All Higher Education by Sector</b> <i>In Constant Dollars (In Thousands)</i>										
Expenditures on Student Aid										
Sector & Category	1994-95	1995-96	1996-97	1997-98	1998-99	1999-00	2000-01	2001-02	2002-03	2003-04
<b>University of California</b>										
State General Fund	\$66,493	\$75,453	\$72,910	\$69,322	\$78,378	\$94,091	\$90,930	\$72,267	\$53,326	\$52,199
Student Fee Revenue	\$151,919	\$142,196	\$156,010	\$156,677	\$161,981	\$155,384	\$157,805	\$198,947	\$240,648	\$303,455
<b>Total UC</b>	<b>\$218,412</b>	<b>\$217,649</b>	<b>\$228,921</b>	<b>\$225,999</b>	<b>\$240,359</b>	<b>\$249,476</b>	<b>\$248,735</b>	<b>\$271,214</b>	<b>\$293,975</b>	<b>\$355,654</b>
<b>California State University</b>										
State General Fund:										
State University Grants	\$41,717	\$40,613	\$39,486	\$38,794	\$45,287	\$53,098	\$51,314	\$50,426	\$34,351	\$33,625
Educational Opportunity Prg	\$17,112	\$16,792	\$16,150	\$16,214	\$15,692	\$18,405	\$18,587	\$18,006	\$17,558	\$17,593
Graduate Equity Fellowship	\$851	\$924	\$920	\$893	\$913	\$854	\$806	\$763	\$726	\$755
Total State General Fund	\$59,681	\$58,328	\$56,556	\$55,901	\$61,891	\$72,357	\$70,706	\$69,196	\$52,636	\$51,973
Student Fee Revenue	\$75,354	\$74,282	\$78,383	\$78,077	\$74,969	\$62,002	\$70,109	\$73,016	\$83,330	\$191,059
<b>Total CSU</b>	<b>\$135,035</b>	<b>\$132,610</b>	<b>\$134,939</b>	<b>\$133,978</b>	<b>\$136,861</b>	<b>\$134,359</b>	<b>\$140,815</b>	<b>\$142,211</b>	<b>\$135,966</b>	<b>\$243,032</b>
<b>Calif. Community Colleges</b>										
State General Fund:										
Board of Govs Fee Waiver	\$92,545	\$112,386	\$114,688	\$118,143	\$107,910	\$89,971	\$95,784	\$95,925	\$104,941	\$168,138
Extended Opportunity Svcs	\$6,592	\$7,467	\$9,585	\$9,417	\$9,260	\$9,404	\$12,401	\$83,196	\$85,502	\$82,671
Total State General Fund	\$99,137	\$119,853	\$124,273	\$127,560	\$117,170	\$99,375	\$108,185	\$179,121	\$190,443	\$250,809
Student Fee Revenue	\$0	\$0	\$0	\$0	\$0	\$0	\$169,900	\$174,779	\$176,411	\$248,510
<b>Total CCC</b>	<b>\$99,137</b>	<b>\$119,853</b>	<b>\$124,273</b>	<b>\$127,560</b>	<b>\$117,170</b>	<b>\$99,375</b>	<b>\$278,085</b>	<b>\$353,900</b>	<b>\$366,854</b>	<b>\$499,319</b>
<b>Student Aid Commission</b>										
State General Fund	\$279,683	\$285,182	\$309,946	\$339,641	\$388,799	\$423,790	\$518,012	\$568,078	\$581,311	\$672,058
Total Expenditures on All Higher Education										
Category & Sector	1994-95	1995-96	1996-97	1997-98	1998-99	1999-00	2000-01	2001-02	2002-03	2003-04
<b>State General Fund</b>										
University of California	\$2,258,466	\$2,309,820	\$2,412,779	\$2,508,599	\$2,850,557	\$2,986,442	\$3,391,802	\$3,469,967	\$3,218,029	\$2,868,069
California State University	\$1,952,528	\$1,962,905	\$2,136,616	\$2,154,276	\$2,376,126	\$2,392,200	\$2,581,346	\$2,799,523	\$2,755,380	\$2,625,699
Calif. Community Colleges	\$1,661,226	\$1,927,469	\$2,192,859	\$2,425,693	\$2,558,320	\$2,808,476	\$2,972,201	\$2,973,200	\$2,941,674	\$2,404,828
<b>Student Fee Revenue</b>										
University of California	\$719,046	\$702,386	\$723,785	\$709,816	\$726,319	\$680,801	\$684,180	\$741,334	\$781,942	\$1,075,006
California State University	\$557,590	\$554,376	\$549,125	\$559,625	\$514,137	\$488,501	\$512,585	\$557,867	\$600,093	\$788,101
Calif. Community Colleges	\$216,338	\$201,020	\$191,484	\$191,558	\$181,355	\$170,673	\$166,501	\$171,329	\$172,882	\$243,539
NOTES: Constant dollars are inflation-adjusted to the 2003-04 academic year. For an explanation of this conversion, see the final section of this report entitled "Notes and Sources." For annual and cumulative percentage changes, see Appendix A, Table J.										

## APPENDIX A. PERCENTAGE TABLES

<b>TABLE A</b>						
<b>Annual and Cumulative Percent Change</b>						
<b>In Undergraduate Tuition, Fees, Cost of Attendance and</b>						
<b>Income of California Residents</b>						
<b>Current Dollars</b>						
Academic Year	Tuition	In-State Fees			Calendar Year	Median Household Income
	ICU	UC	CSU	CCC		
1995-96	5.1%	0.5%	1.8%	0.0%	1995	4.7%
1996-97	4.4%	0.7%	1.8%	0.0%	1996	4.9%
1997-98	4.2%	1.1%	0.8%	-7.7%	1997	2.3%
1998-99	4.6%	-4.2%	-3.3%	-8.3%	1998	3.1%
1999-00	3.2%	-1.8%	-2.9%	0.0%	1999	6.6%
2000-01	7.4%	-3.4%	0.1%	0.0%	2000	7.3%
2001-02	4.3%	0.2%	1.4%	0.0%	2001	1.0%
2002-03	7.2%	4.2%	6.9%	52.7%	2002	0.4%
2003-04	6.4%	37.3%	28.8%	44.4%	2003	3.9%
<b>Δ Change</b>	<b>57.6%</b>	<b>33.3%</b>	<b>37.0%</b>	<b>86.7%</b>	<b>Δ Change</b>	<b>39.5%</b>
Academic Year	Cost of Attendance				Calendar Year	Disposable Personal Income (Per Capita)
	ICU	UC	CSU	CCC		
1995-96	4.4%	1.7%	2.5%	N/A	1995	3.4%
1996-97	4.3%	3.3%	4.0%	N/A	1996	3.5%
1997-98	3.9%	3.1%	2.6%	N/A	1997	3.6%
1998-99	4.2%	0.8%	0.6%	N/A	1998	6.4%
1999-00	3.8%	3.0%	3.7%	N/A	1999	3.4%
2000-01	6.2%	3.9%	3.1%	2.0%	2000	6.5%
2001-02	3.3%	4.6%	3.6%	11.5%	2001	3.0%
2002-03	6.0%	6.9%	8.9%	23.9%	2002	4.2%
2003-04	5.4%	15.4%	10.1%	4.3%	2003	2.8%
<b>Δ Change</b>	<b>49.9%</b>	<b>50.8%</b>	<b>46.1%</b>	<b>N/A</b>	<b>Δ Change</b>	<b>43.4%</b>
<b>Constant Dollars</b>						
Academic Year	Tuition	In-State Fees			Calendar Year	Median Household Income
	ICU	UC	CSU	CCC		
1995-96	2.3%	-2.2%	-0.9%	-2.6%	1995	2.0%
1996-97	1.5%	-2.1%	-1.0%	-2.8%	1996	2.0%
1997-98	2.4%	-0.7%	-0.9%	-9.3%	1997	0.5%
1998-99	2.9%	-5.7%	-4.9%	-9.8%	1998	1.5%
1999-00	0.2%	-4.6%	-5.7%	-2.9%	1999	3.5%
2000-01	3.8%	-6.7%	-3.3%	-3.4%	2000	3.7%
2001-02	2.5%	-1.5%	-0.3%	-1.7%	2001	-0.8%
2002-03	4.9%	2.0%	4.5%	49.4%	2002	-1.8%
2003-04	4.2%	34.3%	26.1%	41.4%	2003	1.7%
<b>Δ Change</b>	<b>27.4%</b>	<b>7.7%</b>	<b>10.7%</b>	<b>50.9%</b>	<b>Δ Change</b>	<b>12.8%</b>
Academic Year	Cost of Attendance				Calendar Year	Disposable Personal Income (Per Capita)
	ICU	UC	CSU	CCC		
1995-96	1.7%	-1.0%	-0.2%	N/A	1995	0.7%
1996-97	1.4%	0.5%	1.1%	N/A	1996	0.6%
1997-98	2.0%	1.3%	0.8%	N/A	1997	1.7%
1998-99	2.5%	-0.8%	-1.0%	N/A	1998	4.7%
1999-00	0.8%	0.0%	0.7%	N/A	1999	0.4%
2000-01	2.6%	0.4%	-0.4%	-1.5%	2000	2.9%
2001-02	1.5%	2.8%	1.8%	9.6%	2001	1.2%
2002-03	3.7%	4.6%	6.5%	21.2%	2002	1.9%
2003-04	3.2%	13.0%	7.8%	2.1%	2003	0.6%
<b>Δ Change</b>	<b>21.2%</b>	<b>21.9%</b>	<b>18.1%</b>	<b>N/A</b>	<b>Δ Change</b>	<b>15.9%</b>
NOTES: Constant dollars are inflation-adjusted to the 2003-04 academic year. For an explanation of this conversion, see the final section of this report entitled "Notes and Sources."						
Based on Table 1.						

**TABLE B**  
**Annual and Cumulative Percent Change**  
**In Aid Awarded to Students at California Postsecondary Institutions**  
*(Based on Constant Dollars)*

All California Institutions										
Programs	Annual Percent Change									Cumulative % Change
	1995-96	1996-97	1997-98	1998-99	1999-00	2000-01	2001-02	2002-03	2003-04	
<b>Federally Supported Aid</b>										
Pell Grants	3.3%	7.2%	3.5%	12.7%	-2.2%	8.0%	19.9%	7.3%	4.3%	83.1%
<b>Campus-Based Aid</b>										
SEOG	-3.8%	2.7%	1.2%	5.3%	-3.4%	-2.9%	13.5%	-2.3%	3.9%	13.7%
Federal Work-Study	-7.9%	6.0%	10.9%	23.2%	9.9%	-6.7%	15.3%	-1.6%	-0.3%	54.6%
Perkins Loans	-1.9%	-11.6%	4.8%	1.6%	-8.5%	-3.4%	11.4%	29.3%	-15.0%	-0.1%
LEAP/SLEAP	-16.3%	-51.0%	49.7%	-40.1%	-14.6%	57.8%	44.4%	14.4%	4.1%	-14.7%
<b>FFELP/FDLP Loans</b>										
Subsidized Stafford	7.4%	5.3%	0.7%	-3.7%	-2.3%	-4.3%	2.0%	5.8%	6.5%	17.7%
Unsubsidized Stafford	13.9%	16.1%	9.9%	2.9%	8.0%	-0.8%	5.0%	8.5%	7.3%	95.9%
PLUS	22.4%	14.3%	12.7%	8.1%	14.3%	10.2%	11.9%	12.0%	33.9%	260.1%
Other Grants	1.3%	-4.8%	5.4%	-3.1%	-8.9%	14.7%	10.1%	2.3%	2.5%	18.9%
Other Loans	-60.0%	-31.1%	15.7%	18.1%	-15.4%	23.0%	-1.6%	27.7%	26.0%	-37.9%
<b>Total Federal Aid</b>	<b>7.8%</b>	<b>8.2%</b>	<b>4.7%</b>	<b>2.5%</b>	<b>1.8%</b>	<b>0.4%</b>	<b>8.1%</b>	<b>7.4%</b>	<b>8.1%</b>	<b>60.6%</b>
<b>State-Administered Aid</b>										
Cal Grant A	1.3%	11.2%	7.9%	9.2%	10.6%	18.8%	-6.5%	-13.9%	5.6%	48.4%
Cal Grant B	-0.5%	3.3%	7.7%	13.2%	8.3%	18.9%	51.0%	31.1%	32.7%	323.7%
Cal Grant C	-12.3%	85.3%	6.1%	23.1%	34.1%	63.8%	23.3%	-16.7%	-6.0%	350.7%
Cal Grant T	-	-	-	-	-6.7%	-12.4%	0.0%	-19.6%	-89.7%	-
Other Grants	-7.1%	8.4%	-2.9%	32.5%	-61.0%	-13.4%	121.2%	135.1%	124.2%	410.6%
State Work-Study	9.5%	-3.6%	-5.7%	45.3%	83.9%	72.3%	7.3%	-0.4%	-100.0%	-100.0%
<b>Total State Aid</b>	<b>0.5%</b>	<b>9.2%</b>	<b>7.6%</b>	<b>14.0%</b>	<b>8.9%</b>	<b>18.9%</b>	<b>11.3%</b>	<b>4.8%</b>	<b>18.8%</b>	<b>141.4%</b>
<b>Institution-Based Aid</b>										
Public	5.4%	3.2%	1.7%	3.2%	-0.2%	9.7%	8.3%	3.6%	31.6%	84.8%
Independent	3.4%	3.2%	0.7%	18.7%	6.3%	13.6%	10.1%	7.2%	9.8%	99.6%
<b>Total Institution-Based Aid</b>	<b>4.5%</b>	<b>2.7%</b>	<b>1.2%</b>	<b>11.2%</b>	<b>3.4%</b>	<b>9.8%</b>	<b>9.3%</b>	<b>5.5%</b>	<b>19.9%</b>	<b>89.3%</b>
<b>TOTAL Federal, State, &amp; Institution-Based Aid</b>	<b>6.7%</b>	<b>7.1%</b>	<b>4.1%</b>	<b>4.8%</b>	<b>2.5%</b>	<b>3.5%</b>	<b>8.6%</b>	<b>6.8%</b>	<b>11.5%</b>	<b>71.0%</b>

NOTES: Constant dollars are inflation-adjusted to the 2003-04 academic year. For an explanation of this conversion, see the final section of this report entitled "Notes and Sources."  
 Based on Table 2a.

**TABLE C**  
**Annual and Cumulative Percent Change**  
**In Aid Awarded to Students at Public California Institutions**  
*(Based on Constant Dollars)*

All Public Institutions										
Programs	Annual Percent Change									Cumulative % Change
	1995-96	1996-97	1997-98	1998-99	1999-00	2000-01	2001-02	2002-03	2003-04	
<b>Federally Supported Aid</b>										
Pell Grants	8.1%	10.0%	4.7%	13.1%	-3.9%	8.2%	19.8%	8.3%	2.4%	94.6%
<b>Campus-Based Aid</b>										
SEOG	2.0%	11.3%	2.9%	-2.8%	-4.7%	4.4%	11.6%	-9.2%	2.5%	17.3%
Federal Work-Study	-6.2%	10.4%	9.6%	2.9%	1.7%	-0.9%	16.0%	2.2%	-0.2%	39.3%
Perkins Loans	-0.7%	-12.0%	3.3%	3.3%	-5.4%	-1.9%	13.0%	29.6%	-17.1%	5.0%
LEAP/SLEAP	-15.2%	-52.2%	39.3%	-34.6%	-4.7%	14.2%	54.9%	-7.2%	-14.3%	-50.5%
FFELP/FDLP Loans	20.4%	9.7%	5.3%	-6.5%	-3.2%	-1.4%	5.3%	10.0%	8.3%	55.7%
Subsidized Stafford	15.7%	5.5%	1.1%	-8.4%	-8.5%	-4.4%	2.1%	7.9%	5.9%	15.3%
Unsubsidized Stafford	31.5%	20.1%	15.1%	-5.3%	7.0%	2.2%	9.4%	12.3%	6.6%	146.4%
PLUS	51.3%	23.6%	16.3%	6.8%	8.0%	7.8%	12.8%	15.7%	25.2%	341.9%
Other Grants	2.1%	-4.2%	5.6%	-3.7%	-9.2%	15.1%	13.3%	2.3%	2.5%	23.7%
Other Loans	-26.2%	-31.1%	15.7%	18.1%	-15.4%	23.0%	-1.6%	27.7%	26.0%	14.5%
<b>Total Federal Aid</b>	<b>13.8%</b>	<b>8.5%</b>	<b>5.2%</b>	<b>-0.2%</b>	<b>-3.5%</b>	<b>2.2%</b>	<b>11.2%</b>	<b>9.0%</b>	<b>5.0%</b>	<b>62.8%</b>
<b>State-Administered Aid</b>										
Cal Grant A	3.8%	5.9%	-0.2%	-5.1%	-4.7%	6.2%	-10.3%	-17.2%	27.3%	-0.5%
Cal Grant B	1.2%	4.8%	6.2%	11.6%	6.5%	20.0%	43.5%	23.5%	34.2%	282.1%
Cal Grant C	-16.3%	17.4%	25.1%	69.1%	11.0%	25.7%	15.4%	-5.8%	-6.1%	195.9%
Cal Grant T	-	-	-	-	-40.7%	-15.6%	-35.2%	5.7%	-95.1%	-
Other Grants	9.9%	4.2%	-6.6%	190.2%	-65.2%	38.5%	133.6%	135.1%	124.2%	1743.0%
State Work-Study	14.9%	-5.3%	-7.1%	57.1%	88.2%	68.0%	17.0%	1.2%	-100.0%	-100.0%
<b>Total State Aid</b>	<b>2.7%</b>	<b>5.4%</b>	<b>2.4%</b>	<b>5.5%</b>	<b>-0.7%</b>	<b>13.7%</b>	<b>18.6%</b>	<b>10.6%</b>	<b>32.6%</b>	<b>129.8%</b>
<b>Institution-Based Aid</b>										
Grants/Scholarships/Fellowships	5.5%	3.2%	1.5%	3.1%	-1.0%	7.4%	8.0%	3.2%	31.2%	77.0%
Loans	5.0%	15.1%	18.6%	-2.0%	46.1%	18.0%	28.9%	53.3%	43.0%	584.5%
Work-Study	-6.0%	-23.8%	-12.3%	62.6%	-26.9%	561.9%	-2.3%	-61.5%	1.3%	88.5%
<b>Total Institution-Based Aid</b>	<b>5.4%</b>	<b>3.2%</b>	<b>1.7%</b>	<b>3.2%</b>	<b>-0.2%</b>	<b>9.7%</b>	<b>8.3%</b>	<b>3.6%</b>	<b>31.6%</b>	<b>84.8%</b>
<b>TOTAL Federal, State, &amp; Institution-Based Aid</b>	<b>11.1%</b>	<b>7.1%</b>	<b>4.3%</b>	<b>0.8%</b>	<b>-2.6%</b>	<b>4.7%</b>	<b>11.1%</b>	<b>7.9%</b>	<b>12.9%</b>	<b>72.8%</b>

NOTES: Constant dollars are inflation-adjusted to the 2003-04 academic year. For an explanation of this conversion, see the final section of this report entitled "Notes and Sources."  
 Based on Table 3a.

<b>TABLE D</b>										
<b>Annual and Cumulative Percent Change</b>										
<b>In Aid Awarded to Students at Public California Institutions</b>										
<i>(Based on Constant Dollars)</i>										
University of California										
Programs	Annual Percent Change									Cumulative % Change
	1995-96	1996-97	1997-98	1998-99	1999-00	2000-01	2001-02	2002-03	2003-04	
<b>Federally Supported Aid</b>										
Pell Grants	6.4%	7.0%	7.9%	11.5%	-2.9%	3.0%	19.0%	12.3%	3.6%	89.8%
<b>Campus-Based Aid</b>										
SEOG	5.9%	-2.0%	5.8%	-7.1%	-6.9%	13.0%	15.9%	-21.8%	6.4%	3.3%
Federal Work-Study	0.3%	5.5%	11.7%	-0.5%	5.0%	-11.4%	24.5%	-3.2%	11.7%	47.3%
Perkins Loans	-7.1%	-14.6%	9.4%	7.4%	-10.2%	-0.2%	19.4%	43.1%	-22.0%	11.3%
LEAP/SLEAP	-15.2%	-49.3%	43.4%	-58.1%	-11.6%	1.9%	-59.7%	-60.0%	-80.9%	-99.3%
<b>FFELP/FDLP Loans</b>										
Subsidized Stafford	8.4%	1.4%	-1.5%	-5.0%	-7.4%	-4.5%	4.6%	7.1%	8.2%	10.3%
Unsubsidized Stafford	15.4%	19.5%	10.7%	-1.3%	6.1%	4.4%	7.3%	8.9%	10.9%	116.1%
PLUS	45.5%	28.5%	9.8%	5.3%	9.1%	9.0%	13.5%	14.0%	18.8%	295.5%
Other Grants	2.6%	-2.5%	5.3%	-3.8%	-9.1%	14.7%	12.8%	2.5%	1.5%	24.2%
Other Loans	-21.0%	-35.7%	14.3%	22.4%	-15.0%	26.0%	-2.6%	30.7%	25.2%	21.3%
<b>Total Federal Aid</b>	<b>9.1%</b>	<b>5.2%</b>	<b>4.4%</b>	<b>-0.6%</b>	<b>-2.5%</b>	<b>1.3%</b>	<b>10.0%</b>	<b>9.8%</b>	<b>7.3%</b>	<b>52.6%</b>
<b>State-Administered Aid</b>										
Cal Grant A	3.4%	3.5%	-1.4%	-6.6%	-6.0%	2.4%	-10.1%	-17.2%	28.4%	-9.3%
Cal Grant B	4.7%	3.8%	5.9%	13.1%	9.2%	15.9%	32.1%	22.6%	47.4%	293.1%
Cal Grant C	-	-	-	-	-	-	55.6%	-11.8%	-24.9%	-
Cal Grant T	-	-	-	-	-45.5%	0.0%	-54.4%	57.0%	-99.5%	-
Other Grants	11.0%	3.1%	-8.4%	27.6%	-12.4%	39.3%	134.1%	135.2%	124.2%	1915.4%
State Work-Study	23.3%	5.3%	-20.2%	31.2%	124.2%	53.4%	53.9%	21.5%	-100.0%	-100.0%
<b>Total State Aid</b>	<b>3.9%</b>	<b>3.6%</b>	<b>0.4%</b>	<b>0.3%</b>	<b>-1.1%</b>	<b>8.0%</b>	<b>8.4%</b>	<b>6.5%</b>	<b>42.6%</b>	<b>90.4%</b>
<b>Institution-Based Aid</b>										
Undergrad. Grants/Schols.	3.2%	0.7%	-1.9%	9.8%	4.8%	5.0%	14.3%	1.0%	27.4%	81.3%
Grad. Grants/Fellowships	15.5%	7.0%	4.2%	3.7%	3.1%	5.9%	6.3%	7.7%	14.5%	91.2%
Loans	-7.7%	8.9%	19.3%	22.5%	43.8%	5.2%	28.8%	36.0%	54.7%	502.5%
Work-Study	7.1%	-56.1%	-33.1%	-27.6%	-30.5%	-77.3%	9.4%	226.6%	962.8%	36.2%
<b>Total Institution-Based Aid</b>	<b>8.1%</b>	<b>3.4%</b>	<b>1.4%</b>	<b>7.2%</b>	<b>5.2%</b>	<b>5.4%</b>	<b>11.2%</b>	<b>5.7%</b>	<b>23.7%</b>	<b>95.7%</b>
<b>TOTAL Federal, State, &amp; Institution-Based Aid</b>	<b>8.3%</b>	<b>4.5%</b>	<b>3.1%</b>	<b>1.6%</b>	<b>-0.1%</b>	<b>3.3%</b>	<b>10.2%</b>	<b>8.1%</b>	<b>16.1%</b>	<b>69.3%</b>
NOTES: Constant dollars are inflation-adjusted to the 2003-04 academic year. For an explanation of this conversion, see the final section of this report entitled "Notes and Sources." Based on Table 3.1a.										

**TABLE E**  
**Annual and Cumulative Percent Change**  
**In Aid Awarded to Students at Public California Institutions**  
*(Based on Constant Dollars)*

California State University										
Programs	Annual Percent Change									Cumulative % Change
	1995-96	1996-97	1997-98	1998-99	1999-00	2000-01	2001-02	2002-03	2003-04	
<b>Federally Supported Aid</b>										
Pell Grants	11.0%	10.8%	11.8%	14.5%	-2.6%	5.7%	17.6%	5.1%	-0.5%	99.4%
<b>Campus-Based Aid</b>										
SEOG	-13.2%	-3.7%	11.0%	3.9%	-3.6%	-1.3%	8.4%	-15.6%	-6.3%	-21.3%
Federal Work-Study	-20.0%	3.0%	24.0%	3.3%	9.7%	-1.9%	12.5%	4.6%	-9.9%	20.5%
Perkins Loans	11.0%	-6.7%	-5.8%	-4.8%	4.2%	-6.2%	4.4%	3.4%	-2.7%	-4.7%
LEAP/SLEAP	-16.9%	-50.2%	21.3%	-33.5%	7.0%	-27.0%	-38.9%	-60.0%	-81.7%	-98.8%
<b>FFELP/FDLP Loans</b>										
Subsidized Stafford	22.4%	11.0%	2.4%	-4.2%	-9.0%	-7.4%	0.0%	8.0%	3.4%	25.4%
Unsubsidized Stafford	42.4%	23.3%	24.5%	-1.7%	8.5%	-1.1%	10.0%	11.6%	2.6%	190.0%
PLUS	73.0%	9.7%	38.8%	10.8%	5.0%	4.6%	10.4%	20.0%	41.6%	500.9%
Other Grants	-11.4%	-52.4%	23.0%	0.7%	-13.1%	36.2%	32.7%	-4.6%	42.7%	11.5%
Other Loans	-69.5%	74.4%	28.1%	-14.9%	-19.4%	-11.7%	15.0%	-14.4%	43.6%	-41.6%
<b>Total Federal Aid</b>	<b>20.6%</b>	<b>11.7%</b>	<b>9.1%</b>	<b>0.9%</b>	<b>-3.2%</b>	<b>-2.2%</b>	<b>7.6%</b>	<b>7.8%</b>	<b>3.2%</b>	<b>68.1%</b>
<b>State-Administered Aid</b>										
Cal Grant A	5.5%	16.9%	4.8%	0.5%	0.3%	18.9%	-10.6%	-17.4%	24.1%	42.1%
Cal Grant B	-3.9%	5.4%	7.3%	18.8%	9.9%	17.5%	45.1%	21.5%	36.2%	300.8%
Cal Grant C	-	-	-	-	-	-	-	-	-	-
Cal Grant T	-	-	-	-	-38.6%	-21.9%	-25.2%	-10.6%	-92.7%	-
Other Grants	-2.6%	13.4%	14.3%	1702.3%	-99.5%	-51.7%	-41.0%	-100.0%	-	-100.0%
State Work-Study	22.5%	-21.8%	4.2%	25.4%	102.4%	44.5%	-4.8%	-15.9%	-100.0%	-100.0%
<b>Total State Aid</b>	<b>0.1%</b>	<b>10.2%</b>	<b>6.2%</b>	<b>19.5%</b>	<b>0.7%</b>	<b>17.5%</b>	<b>22.0%</b>	<b>9.9%</b>	<b>31.4%</b>	<b>191.6%</b>
<b>Institution-Based Aid</b>										
State University Grants	-1.9%	2.1%	-1.3%	3.8%	-4.3%	11.3%	-4.4%	-2.9%	57.5%	60.0%
Educational Opportunity Prg.	-1.9%	-3.8%	0.4%	-3.2%	17.3%	1.0%	-3.1%	-2.5%	0.2%	2.8%
Other Grants/Scholarships	14.8%	2.1%	19.7%	8.6%	-2.2%	17.7%	18.3%	-2.0%	15.9%	135.9%
Loans	15.6%	79.1%	112.7%	40.6%	59.5%	48.2%	62.4%	112.6%	16.2%	5771.8%
Work-Study	-	-	-	-	-6.4%	-50.8%	-100.0%	-	-60.1%	-
<b>Total Institution-Based Aid</b>	<b>1.2%</b>	<b>1.7%</b>	<b>3.6%</b>	<b>4.6%</b>	<b>-1.3%</b>	<b>12.4%</b>	<b>2.8%</b>	<b>1.2%</b>	<b>38.0%</b>	<b>77.2%</b>
<b>TOTAL Federal, State, &amp; Institution-Based Aid</b>	<b>16.1%</b>	<b>10.1%</b>	<b>8.2%</b>	<b>2.2%</b>	<b>-2.7%</b>	<b>0.9%</b>	<b>7.7%</b>	<b>6.9%</b>	<b>10.2%</b>	<b>75.8%</b>

NOTES: Constant dollars are inflation-adjusted to the 2003-04 academic year. For an explanation of this conversion, see the final section of this report entitled "Notes and Sources."  
Based on Table 3.2a.

**TABLE F**  
**Annual and Cumulative Percent Change**  
**In Aid Awarded to Students at Public California Institutions**  
*(Based on Constant Dollars)*

California Community Colleges										
Programs	Annual Percent Change									Cumulative % Change
	1995-96	1996-97	1997-98	1998-99	1999-00	2000-01	2001-02	2002-03	2003-04	
<b>Federally Supported Aid</b>										
Pell Grants	6.9%	10.3%	-0.2%	12.6%	-5.1%	11.4%	21.4%	9.3%	3.9%	93.2%
<b>Campus-Based Aid</b>										
SEOG	11.1%	26.9%	-1.8%	-4.2%	-4.3%	3.9%	11.3%	-0.1%	4.7%	53.6%
Federal Work-Study	0.3%	21.1%	-1.8%	6.2%	-7.9%	11.6%	11.5%	5.6%	-2.8%	49.1%
Perkins Loans	9.4%	-17.7%	-1.8%	9.2%	-4.3%	8.5%	-8.8%	8.2%	-17.0%	-17.9%
LEAP/SLEAP	-11.3%	-71.9%	65.8%	156.9%	-3.3%	60.6%	177.0%	2.9%	-9.4%	325.5%
<b>FFELP/FDLP Loans</b>										
Subsidized Stafford	11.4%	-7.0%	2.7%	-45.3%	-10.6%	26.6%	6.5%	10.8%	13.0%	-12.1%
Unsubsidized Stafford	58.5%	9.1%	-12.4%	-48.8%	-4.3%	26.9%	20.6%	45.2%	14.3%	88.3%
PLUS	1.4%	15.2%	-17.1%	0.9%	47.2%	16.2%	23.2%	45.1%	59.3%	376.4%
Other Grants	-	-	-	-	-	-	-	-	-	-
Other Loans	-	-	-	-	-	-	-	-	-	-
<b>Total Federal Aid</b>	<b>9.9%</b>	<b>7.7%</b>	<b>-0.6%</b>	<b>-2.0%</b>	<b>-5.6%</b>	<b>13.0%</b>	<b>25.6%</b>	<b>8.7%</b>	<b>10.8%</b>	<b>86.0%</b>
<b>State-Administered Aid</b>										
Cal Grant A	-	-	-	-	-	-	-	-	-	-
Cal Grant B	2.2%	5.8%	5.3%	-0.5%	-4.2%	33.6%	63.2%	27.8%	11.6%	237.4%
Cal Grant C	-16.3%	16.3%	26.2%	69.1%	11.0%	23.6%	14.7%	-5.6%	-5.7%	191.1%
Cal Grant T	-	-	-	-	-	-	-	-	-	-
Other Grants	29.8%	94.5%	-14.0%	-	-	-	-	-	-	-
State Work-Study	-3.6%	5.7%	-1.8%	125.4%	54.7%	103.2%	3.9%	-10.6%	-100.0%	-100.0%
<b>Total State Aid</b>	<b>1.5%</b>	<b>6.2%</b>	<b>5.9%</b>	<b>3.5%</b>	<b>-1.9%</b>	<b>35.6%</b>	<b>56.7%</b>	<b>24.7%</b>	<b>8.0%</b>	<b>231.5%</b>
<b>Institution-Based Aid</b>										
Board of Gvs Fee Waiver	3.4%	2.5%	0.7%	-7.7%	-16.6%	6.5%	-0.2%	9.8%	60.3%	53.5%
Extended Opportunity Svcs	13.3%	28.4%	-1.8%	-1.7%	1.6%	32.1%	10.9%	-15.8%	25.2%	120.2%
Other Grants/Scholarships	5.7%	5.4%	-1.8%	-9.0%	7.7%	-20.3%	150.8%	25.5%	23.7%	233.5%
Loans	74.1%	24.7%	-1.8%	-97.4%	77.8%	946.0%	-66.2%	27.6%	87.6%	-16.2%
Work-Study	-19.7%	21.2%	-1.8%	89.7%	-26.8%	657.9%	-2.2%	-65.1%	-32.0%	133.6%
<b>Total Institution-Based Aid</b>	<b>4.5%</b>	<b>4.7%</b>	<b>0.3%</b>	<b>-8.1%</b>	<b>-13.9%</b>	<b>20.5%</b>	<b>8.0%</b>	<b>0.9%</b>	<b>48.3%</b>	<b>69.0%</b>
<b>TOTAL Federal, State, &amp; Institution-Based Aid</b>	<b>8.4%</b>	<b>7.0%</b>	<b>-0.2%</b>	<b>-3.1%</b>	<b>-7.1%</b>	<b>15.2%</b>	<b>18.8%</b>	<b>9.3%</b>	<b>12.0%</b>	<b>74.5%</b>

NOTES: Constant dollars are inflation-adjusted to the 2003-04 academic year. For an explanation of this conversion, see the final section of this report entitled "Notes and Sources."  
 Based on Table 3.3a.

**TABLE G**  
**Annual and Cumulative Percent Change**  
**In Aid Awarded to Students at Private California Institutions**  
*(Based on Constant Dollars)*

Independent Nonprofit Institutions										
Programs	Annual Percent Change									Cumulative % Change
	1995-96	1996-97	1997-98	1998-99	1999-00	2000-01	2001-02	2002-03	2003-04	
<b>Federally Supported Aid</b>										
Pell Grants	5.2%	3.2%	4.0%	15.4%	-3.4%	4.0%	16.7%	4.2%	1.9%	62.1%
<b>Campus-Based Aid</b>										
SEOG	-13.5%	-0.8%	0.0%	32.3%	-1.5%	-9.0%	14.8%	-2.9%	3.0%	16.9%
Federal Work-Study	-11.6%	-0.8%	0.1%	113.4%	27.7%	-14.2%	10.7%	-6.8%	-1.8%	108.2%
Perkins Loans	-11.3%	-0.8%	-1.3%	5.5%	-25.4%	-14.1%	-1.4%	-25.7%	2.0%	-56.2%
LEAP/SLEAP	-18.2%	-49.2%	73.0%	-48.1%	-36.0%	144.4%	13.3%	8.8%	20.0%	-13.7%
<b>FFELP/FDLP Loans</b>										
Subsidized Stafford	0.3%	5.0%	-0.1%	-1.5%	1.4%	-6.3%	1.5%	6.6%	2.6%	9.4%
Unsubsidized Stafford	6.5%	14.9%	8.3%	5.7%	7.3%	-3.0%	4.5%	9.1%	4.2%	73.0%
PLUS	16.0%	9.6%	6.8%	2.1%	15.6%	3.7%	9.1%	8.9%	30.7%	157.9%
Other Grants	-19.1%	-24.5%	-1.3%	20.8%	-0.3%	2.6%	-	-	-	-
Other Loans	-	-	-	-	-	-	-	-	-	-
<b>Total Federal Aid</b>	<b>3.2%</b>	<b>8.6%</b>	<b>4.0%</b>	<b>3.8%</b>	<b>4.9%</b>	<b>-3.7%</b>	<b>4.5%</b>	<b>7.3%</b>	<b>5.7%</b>	<b>44.7%</b>
<b>State-Administered Aid</b>										
Cal Grant A	-1.1%	17.2%	13.4%	28.5%	20.4%	21.1%	-0.1%	-12.9%	-6.6%	100.1%
Cal Grant B	-16.9%	-12.8%	12.6%	30.5%	20.4%	5.9%	78.1%	59.7%	25.4%	384.2%
Cal Grant C	-4.6%	87.6%	-25.3%	20.7%	71.7%	79.8%	22.1%	-23.8%	-23.2%	256.5%
Cal Grant T	-	-	-	-	11.1%	-11.5%	9.3%	-27.4%	-87.9%	-
Graduate Fellowships	-13.7%	10.5%	-1.2%	-36.0%	-52.7%	-88.7%	-100.0%	-	-	-100.0%
State Work-Study	-10.0%	-2.8%	-1.8%	4.4%	49.4%	118.0%	-100.0%	-	-	-100.0%
<b>Total State Aid</b>	<b>-3.2%</b>	<b>14.6%</b>	<b>12.5%</b>	<b>32.6%</b>	<b>19.2%</b>	<b>18.7%</b>	<b>4.8%</b>	<b>-6.2%</b>	<b>-3.3%</b>	<b>122.9%</b>
<b>Institution-Based Aid</b>	<b>3.5%</b>	<b>2.1%</b>	<b>0.6%</b>	<b>20.2%</b>	<b>6.8%</b>	<b>9.8%</b>	<b>10.1%</b>	<b>7.2%</b>	<b>9.8%</b>	<b>94.3%</b>
<b>TOTAL Federal, State, &amp; Institution-Based Aid</b>	<b>3.0%</b>	<b>7.2%</b>	<b>3.5%</b>	<b>8.9%</b>	<b>6.2%</b>	<b>1.2%</b>	<b>6.1%</b>	<b>6.3%</b>	<b>6.3%</b>	<b>60.4%</b>

NOTES: Constant dollars are inflation-adjusted to the 2003-04 academic year. For an explanation of this conversion, see the final section of this report entitled "Notes and Sources."  
 Based on Table 4a.

**TABLE H**  
**Annual and Cumulative Percent Change**  
**In Aid Awarded to Students at Private California Institutions**  
*(Based on Constant Dollars)*

Proprietary and Specialty Institutions										
Programs	Annual Percent Change									Cumulative % Change
	1995-96	1996-97	1997-98	1998-99	1999-00	2000-01	2001-02	2002-03	2003-04	
<b>Federally Supported Aid</b>										
Pell Grants	-14.6%	-2.8%	-3.4%	8.8%	8.9%	9.9%	22.4%	4.0%	15.2%	53.0%
<b>Campus-Based Aid</b>										
SEOG	-10.2%	-22.2%	-5.6%	7.7%	-1.0%	-25.2%	22.9%	38.4%	10.6%	-0.7%
Federal Work-Study	-13.3%	-22.2%	86.1%	-2.7%	-3.2%	-16.8%	40.8%	-13.3%	7.6%	29.4%
Perkins Loans	13.0%	-52.1%	166.1%	-56.8%	-27.2%	-16.9%	-5.3%	583.1%	9.1%	165.6%
LEAP/SLEAP	-20.4%	-41.1%	39.3%	-55.3%	-14.8%	551.4%	96.2%	113.1%	20.9%	719.7%
<b>FFELP/FDLP Loans</b>										
Subsidized Stafford	2.9%	5.0%	1.5%	7.5%	6.5%	1.3%	2.5%	-1.4%	18.6%	52.6%
Unsubsidized Stafford	17.5%	14.3%	7.5%	6.8%	11.5%	1.7%	0.8%	1.8%	18.2%	112.1%
PLUS	7.9%	11.8%	19.1%	20.3%	20.2%	22.1%	14.4%	12.2%	46.1%	375.8%
Other Grants	-	-	-	-	-	-	-	-	-	-
Other Loans	-100.0%	-	-	-	-	-	-	-	-	-
<b>Total Federal Aid</b>	<b>1.9%</b>	<b>6.0%</b>	<b>4.7%</b>	<b>8.5%</b>	<b>9.9%</b>	<b>5.1%</b>	<b>7.6%</b>	<b>3.6%</b>	<b>22.2%</b>	<b>93.0%</b>
<b>State-Administered Aid</b>										
Cal Grant A	-11.3%	35.7%	66.1%	-11.3%	48.1%	75.2%	-32.3%	-7.0%	16.0%	236.0%
Cal Grant B	15.7%	5.9%	74.3%	17.9%	31.2%	30.0%	183.7%	86.9%	30.0%	2862.0%
Cal Grant C	-12.9%	136.8%	12.8%	4.2%	37.3%	78.4%	26.8%	-17.7%	0.7%	523.9%
Cal Grant T	-	-	-	-	-	-	-	-	-	-
Other Grants	-	-	-	-	-	-	-	-	-	-
State Work-Study	-30.8%	40.4%	10.8%	-55.3%	11.7%	168.3%	27.8%	-92.3%	-100.0%	-100.0%
<b>Total State Aid</b>	<b>-8.2%</b>	<b>40.9%</b>	<b>58.1%</b>	<b>-5.8%</b>	<b>43.9%</b>	<b>68.9%</b>	<b>0.3%</b>	<b>22.2%</b>	<b>20.6%</b>	<b>592.3%</b>
<b>Institution-Based Aid</b>	<b>N/A</b>	<b>N/A</b>	<b>N/A</b>	<b>N/A</b>	<b>N/A</b>	<b>N/A</b>	<b>N/A</b>	<b>N/A</b>	<b>N/A</b>	<b>N/A</b>
<b>TOTAL Federal, State, &amp; Institution-Based Aid</b>	<b>1.8%</b>	<b>6.4%</b>	<b>5.5%</b>	<b>8.2%</b>	<b>10.6%</b>	<b>6.8%</b>	<b>7.3%</b>	<b>4.3%</b>	<b>22.1%</b>	<b>99.5%</b>

NOTES: Constant dollars are inflation-adjusted to the 2003-04 academic year. For an explanation of this conversion, see the final section of this report entitled "Notes and Sources."  
Based on Table 4.1a.

**TABLE I**  
**Annual and Cumulative Percent Change in Constant-Dollar Volume**  
**For the Largest Generally Available Aid Programs by Sector**

Program & Sector	Annual Percent Change									Cumulative % Change
	1995-96	1996-97	1997-98	1998-99	1999-00	2000-01	2001-02	2002-03	2003-04	
<b>TOTAL AID</b>										
Public Institutions: UC	8.3%	4.5%	3.1%	1.6%	-0.1%	3.3%	10.2%	8.1%	16.1%	69.3%
CSU	16.1%	10.1%	8.2%	2.2%	-2.7%	0.9%	7.7%	6.9%	10.2%	75.8%
CCC	8.4%	7.0%	-0.2%	-3.1%	-7.1%	15.2%	18.8%	9.3%	12.0%	74.5%
Total Public Institutions	11.1%	7.1%	4.3%	0.8%	-2.6%	4.7%	11.1%	7.9%	12.9%	72.8%
Independent Institutions	3.0%	7.2%	3.5%	8.9%	6.2%	1.2%	6.1%	6.3%	6.3%	60.4%
Proprietary Institutions	1.8%	6.4%	5.5%	8.2%	10.6%	6.8%	7.3%	4.3%	22.1%	99.5%
<b>Total</b>	<b>6.7%</b>	<b>7.1%</b>	<b>4.1%</b>	<b>4.8%</b>	<b>2.5%</b>	<b>3.5%</b>	<b>8.6%</b>	<b>6.8%</b>	<b>11.5%</b>	<b>71.0%</b>
<b>Pell Grant</b>										
Public Institutions: UC	6.4%	7.0%	7.9%	11.5%	-2.9%	3.0%	19.0%	12.3%	3.6%	89.8%
CSU	11.0%	10.8%	11.8%	14.5%	-2.6%	5.7%	17.6%	5.1%	-0.5%	99.4%
CCC	6.9%	10.3%	-0.2%	12.6%	-5.1%	11.4%	21.4%	9.3%	3.9%	93.2%
Total Public Institutions	8.1%	10.0%	4.7%	13.1%	-3.9%	8.2%	19.8%	8.3%	2.4%	94.6%
Independent Institutions	5.2%	3.2%	4.0%	15.4%	-3.4%	4.0%	16.7%	4.2%	1.9%	62.1%
Proprietary Institutions	-14.6%	-2.8%	-3.4%	8.8%	8.9%	9.9%	22.4%	4.0%	15.2%	53.0%
<b>Total</b>	<b>3.3%</b>	<b>7.2%</b>	<b>3.5%</b>	<b>12.7%</b>	<b>-2.2%</b>	<b>8.0%</b>	<b>19.9%</b>	<b>7.3%</b>	<b>4.3%</b>	<b>83.1%</b>
<b>Stafford Subsidized Loan</b>										
Public Institutions: UC	8.4%	1.4%	-1.5%	-5.0%	-7.4%	-4.5%	4.6%	7.1%	8.2%	10.3%
CSU	22.4%	11.0%	2.4%	-4.2%	-9.0%	-7.4%	0.0%	8.0%	3.4%	25.4%
CCC	11.4%	-7.0%	2.7%	-45.3%	-10.6%	26.6%	6.5%	10.8%	13.0%	-12.1%
Total Public Institutions	15.7%	5.5%	1.1%	-8.4%	-8.5%	-4.4%	2.1%	7.9%	5.9%	15.3%
Independent Institutions	0.3%	5.0%	-0.1%	-1.5%	1.4%	-6.3%	1.5%	6.6%	2.6%	9.4%
Proprietary Institutions	2.9%	5.0%	1.5%	7.5%	6.5%	1.3%	2.5%	-1.4%	18.6%	52.6%
<b>Total</b>	<b>7.4%</b>	<b>5.3%</b>	<b>0.7%</b>	<b>-3.7%</b>	<b>-2.3%</b>	<b>-4.3%</b>	<b>2.0%</b>	<b>5.8%</b>	<b>6.5%</b>	<b>17.7%</b>
<b>Stafford Unsubsidized Loan</b>										
Public Institutions: UC	15.4%	19.5%	10.7%	-1.3%	6.1%	4.4%	7.3%	8.9%	10.9%	116.1%
CSU	42.4%	23.3%	24.5%	-1.7%	8.5%	-1.1%	10.0%	11.6%	2.6%	190.0%
CCC	58.5%	9.1%	-12.4%	-48.8%	-4.3%	26.9%	20.6%	45.2%	14.3%	88.3%
Total Public Institutions	31.5%	20.1%	15.1%	-5.3%	7.0%	2.2%	9.4%	12.3%	6.6%	146.4%
Independent Institutions	6.5%	14.9%	8.3%	5.7%	7.3%	-3.0%	4.5%	9.1%	4.2%	73.0%
Proprietary Institutions	17.5%	14.3%	7.5%	6.8%	11.5%	1.7%	0.8%	1.8%	18.2%	112.1%
<b>Total</b>	<b>13.9%</b>	<b>16.1%</b>	<b>9.9%</b>	<b>2.9%</b>	<b>8.0%</b>	<b>-0.8%</b>	<b>5.0%</b>	<b>8.5%</b>	<b>7.3%</b>	<b>95.9%</b>
<b>Campus-Based Programs</b>										
Public Institutions: UC	-3.0%	-6.6%	9.5%	2.2%	-4.8%	-2.1%	20.4%	16.3%	-9.3%	20.0%
CSU	-6.6%	-3.0%	8.0%	0.5%	4.0%	-3.3%	8.6%	-1.2%	-6.6%	-0.8%
CCC	6.2%	21.4%	-1.8%	0.8%	-5.9%	7.4%	10.4%	2.8%	0.3%	46.9%
Total Public Institutions	-1.8%	2.2%	5.4%	1.2%	-2.5%	0.3%	13.7%	7.2%	-5.8%	20.2%
Independent Institutions	-12.2%	-0.8%	-0.3%	58.6%	10.6%	-12.7%	10.7%	-7.2%	0.0%	36.7%
Proprietary Institutions	-9.2%	-24.8%	23.6%	-3.3%	-3.1%	-22.1%	27.9%	35.9%	9.7%	17.4%
<b>Total</b>	<b>-4.6%</b>	<b>-0.8%</b>	<b>5.6%</b>	<b>10.8%</b>	<b>0.7%</b>	<b>-4.7%</b>	<b>13.8%</b>	<b>5.5%</b>	<b>-3.3%</b>	<b>23.2%</b>
<b>Cal Grants A/B/C/T</b>										
Public Institutions: UC	3.8%	3.6%	0.6%	0.0%	-1.4%	7.3%	6.2%	2.3%	39.1%	72.8%
CSU	0.0%	10.4%	6.2%	15.1%	4.2%	17.1%	22.4%	10.2%	32.7%	194.4%
CCC	1.5%	6.1%	6.0%	2.2%	-3.3%	32.9%	59.9%	26.1%	11.0%	235.8%
Total Public Institutions	2.6%	5.5%	2.5%	4.0%	0.0%	12.9%	17.7%	8.8%	31.6%	119.5%
Independent Institutions	-2.8%	14.8%	13.0%	34.7%	20.2%	19.2%	5.1%	-6.2%	-3.3%	132.0%
Proprietary Institutions	-8.1%	40.9%	58.3%	-5.6%	43.9%	68.8%	0.2%	22.5%	20.6%	596.3%
<b>Total</b>	<b>0.6%</b>	<b>9.2%</b>	<b>7.8%</b>	<b>13.6%</b>	<b>9.8%</b>	<b>18.7%</b>	<b>10.9%</b>	<b>3.7%</b>	<b>17.8%</b>	<b>137.7%</b>

NOTES: Constant dollars are inflation-adjusted to the 2003-04 academic year. For an explanation of this conversion, see the final section of this report entitled "Notes and Sources." Based on Table 5a.

**TABLE J**  
**Annual and Cumulative Percent Change**  
**In Constant-Dollar State General Fund and Student Fee Revenue Expenditures**  
**On Student Aid and All Higher Education by Sector**

Expenditures on Student Aid										
Sector & Category	Annual Percent Change									Cumulative % Change
	1995-96	1996-97	1997-98	1998-99	1999-00	2000-01	2001-02	2002-03	2003-04	
<b>University of California</b>										
State General Fund	13.5%	-3.4%	-4.9%	13.1%	20.0%	-3.4%	-20.5%	-26.2%	-2.1%	-21.5%
Student Fee Revenue	-6.4%	9.7%	0.4%	3.4%	-4.1%	1.6%	26.1%	21.0%	26.1%	99.7%
<b>Total UC</b>	<b>-0.3%</b>	<b>5.2%</b>	<b>-1.3%</b>	<b>6.4%</b>	<b>3.8%</b>	<b>-0.3%</b>	<b>9.0%</b>	<b>8.4%</b>	<b>21.0%</b>	<b>62.8%</b>
<b>California State University</b>										
State General Fund:										
State University Grants	-2.6%	-2.8%	-1.8%	16.7%	17.2%	-3.4%	-1.7%	-31.9%	-2.1%	-19.4%
Educational Opportunity Prg	-1.9%	-3.8%	0.4%	-3.2%	17.3%	1.0%	-3.1%	-2.5%	0.2%	2.8%
Graduate Equity Fellowship	8.5%	-0.4%	-3.0%	2.2%	-6.4%	-5.7%	-5.2%	-4.9%	3.9%	-11.3%
Total State General Fund	-2.3%	-3.0%	-1.2%	10.7%	16.9%	-2.3%	-2.1%	-23.9%	-1.3%	-12.9%
Student Fee Revenue	-1.4%	5.5%	-0.4%	-4.0%	-17.3%	13.1%	4.1%	14.1%	129.3%	153.5%
<b>Total CSU</b>	<b>-1.8%</b>	<b>1.8%</b>	<b>-0.7%</b>	<b>2.2%</b>	<b>-1.8%</b>	<b>4.8%</b>	<b>1.0%</b>	<b>-4.4%</b>	<b>78.7%</b>	<b>80.0%</b>
<b>Calif. Community Colleges</b>										
State General Fund:										
Board of Govs Fee Waiver	21.4%	2.0%	3.0%	-8.7%	-16.6%	6.5%	0.1%	9.4%	60.2%	81.7%
Extended Opportunity Svcs	13.3%	28.4%	-1.8%	-1.7%	1.6%	31.9%	570.9%	2.8%	-3.3%	1154.1%
Total State General Fund	20.9%	3.7%	2.6%	-8.1%	-15.2%	8.9%	65.6%	6.3%	31.7%	153.0%
Student Fee Revenue	-	-	-	-	-	-	2.9%	0.9%	40.9%	-
<b>Total CCC</b>	<b>20.9%</b>	<b>3.7%</b>	<b>2.6%</b>	<b>-8.1%</b>	<b>-15.2%</b>	<b>179.8%</b>	<b>27.3%</b>	<b>3.7%</b>	<b>36.1%</b>	<b>403.7%</b>
<b>Student Aid Commission</b>										
State General Fund	2.0%	8.7%	9.6%	14.5%	9.0%	22.2%	9.7%	2.3%	15.6%	140.3%
Total Expenditures on All Higher Education										
Category & Sector	Annual Percent Change									Cumulative % Change
	1995-96	1996-97	1997-98	1998-99	1999-00	2000-01	2001-02	2002-03	2003-04	
<b>State General Fund</b>										
University of California	2.3%	4.5%	4.0%	13.6%	4.8%	13.6%	2.3%	-7.3%	-10.9%	27.0%
California State University	0.5%	8.8%	0.8%	10.3%	0.7%	7.9%	8.5%	-1.6%	-4.7%	34.5%
Calif. Community Colleges	16.0%	13.8%	10.6%	5.5%	9.8%	5.8%	0.0%	-1.1%	-18.2%	44.8%
<b>Student Fee Revenue</b>										
University of California	-2.3%	3.0%	-1.9%	2.3%	-6.3%	0.5%	8.4%	5.5%	37.5%	49.5%
California State University	-0.6%	-0.9%	1.9%	-8.1%	-5.0%	4.9%	8.8%	7.6%	31.3%	41.3%
Calif. Community Colleges	-7.1%	-4.7%	0.0%	-5.3%	-5.9%	-2.4%	2.9%	0.9%	40.9%	12.6%
NOTES: Constant dollars are inflation-adjusted to the 2003-04 academic year. For an explanation of this conversion, see the final section of this report entitled "Notes and Sources." Based on Table 8a.										

## APPENDIX B. FEDERAL LOAN LIMITS

<b>Federal Loan Limits After Amendments To the Higher Education Act of 1992<sup>1</sup></b>		
<b>Educational Level</b>	<b>Independent Students</b>	<b>Dependent Students</b>
<b>Subsidized Stafford Loans</b>		
First Year	\$2,625	\$2,625
Second Year	\$3,500	\$3,500
Third or More	\$5,500	\$5,500
Graduate	\$8,500	N/A <sup>2</sup>
<b>Combined Subsidized and SLS/Unsubsidized Stafford Loans</b>		
First Year	\$6,625	\$2,625
Second Year	\$7,500	\$3,500
Third or More	\$10,500	\$5,500
Graduate	\$18,500	N/A
PLUS	N/A	No Limits <sup>3</sup>
<b>Aggregate Maximums</b>		
Undergraduate	\$46,000	\$23,000
Graduate <sup>4</sup>	\$138,500 <sup>5</sup>	N/A
PLUS	N/A	No Limits <sup>6</sup>
<p><sup>1</sup>Perkins Loans are not included in this chart. Aggregate Perkins limits, which are separate from Stafford Loan limits under federal statute, are \$8,000 for any student who has not completed the first two years of undergraduate study, \$20,000 for an undergraduate who has completed at least two years but does not have a BA/BS, and \$40,000 for graduate students. Annual Perkins Loan limits are \$4,000 for undergraduates and \$6,000 for graduate students.</p> <p><sup>2</sup>Under the 1992 amendments to the Higher Education Act, all graduate students are defined as independent for purposes of Title IV aid eligibility.</p> <p><sup>3</sup>A PLUS loan cannot exceed the cost of attendance.</p> <p><sup>4</sup>Including amounts borrowed as undergraduate.</p> <p><sup>5</sup>Some students in the health professions can borrow up to \$189,125.</p> <p><sup>6</sup>Subject to the sum of the annual cost of attendance limitations.</p>		

## NOTES AND SOURCES

### Acronyms/Abbreviations

AY	Academic Year
CCC	California Community Colleges
CSAC	California Student Aid Commission
CSU	California State University
FDLP	William D. Ford Federal Direct Loan Program
FFELP	Federal Family Education Loan Program
FWS	Federal Work-Study
ICU	Independent Colleges and Universities (Private Nonprofit)
LEAP	Leveraging Educational Assistance Partnership Program
PLUS	Parent Loans to Undergraduate Students
SEOG	Federal Supplemental Educational Opportunity Grant
SLEAP	Special Leveraging Educational Assistance Partnership Program
UC	University of California

### General Notes

- Aid is reported by the academic year in which it is awarded. The academic year is defined as July 1 to June 30. When necessary, federal fiscal year data are converted to the academic year equivalents by reassigning the July through September expenditures.
- Detailed figures may not add to totals due to rounding.

### California Terminology

- Traditionally, the term “fees” has been used in the California public sectors rather than tuition because the 1960 Master Plan for Higher Education stipulated that students in California were not to be charged tuition, but rather only fees covering administrative and auxiliary services. This convention is reflected in this report.

**Constant Dollar Conversion**

- The Consumer Price Index for all urban dwellers (the CPI-U) is used to adjust for inflation. Updated CPI data are available from the Bureau of Labor Statistics website (<http://www.bls.gov/cpi/>).
- An academic base-year calculation was used in most cases, and was calculated using CPI data for the months inclusive of July 2003 to June 2004.

***Formula for Constant Dollar Conversion***

$$= \text{Current Year Dollars} \times \frac{\text{CPI for the base year}}{\text{CPI for the current year}} \text{ Constant Dollars (Base Year)}$$

- The table below provides academic year CPI data. The factor column provides the user with a multiplication factor equal to that of CPI (base year) divided by CPI (current year), as illustrated in the right-hand side of the above equation. A simple multiplication of a current year figure by the associated factor will yield a constant-dollar result.

**Consumer Price Indexes  
(1982–84=100)  
Academic Year**

<b>Year</b>	<b>CPI</b>	<b>Factor</b>
1994-95	150.4	1.2372
1995-96	154.5	1.2045
1996-97	158.9	1.1711
1997-98	161.7	1.1505
1998-99	164.4	1.1322
1999-00	169.2	1.0997
2000-01	175.1	1.0627
2001-02	178.2	1.0443
2002-03	182.2	1.0216
2003-04	186.1	1.0000

## Primary Sources

Unless otherwise noted, the sources for aid awarded, for student charges, and for student fee revenue are as follows:

- University of California: Student Financial Support, Office of the President
- California State University: Academic Affairs, Access and Retention, Office of the Chancellor
- California Community Colleges: Student Financial Assistance Programs, Office of the Chancellor
- Independent Nonprofit Institutions: Association of Independent California Colleges and Universities (AICCU) and California Student Aid Commission
- Proprietary and Specialty Institutions: California Student Aid Commission

## Additional Sources

- Loan Data for Independent Nonprofit and Proprietary Institutions: U.S. Department of Education, National Student Loan Data System
- Disposable Personal Income: Bureau of Economic Analysis, U.S. Department of Commerce
- Median Household Income: Housing and Household Economics Statistics Division, Income Statistics Branch, Bureau of the Census
- State General Fund and Student Fee Revenue Expenditures: California State Department of Finance
- Consumer Price Index: Bureau of Labor Statistics, U.S. Department of Labor

## Acknowledgments

Many people assisted with the preparation of this report by providing data, reviewing drafts and offering comments. CSAC, EDfUND and the Educational Policy Institute wish to thank:

- David Alcocer, University of California;
- Mary Robinson, California State University;
- Tim Bonnel, California Community Colleges;
- Beth Benedetti, Association of Independent California Colleges and Universities;
- Michael Barbour, California Student Aid Commission;
- Sara Swan, California State Department of Finance; and
- Maria Rojtman, Mary Miller and Steve Carter of the U.S. Department of Education.







CALIFORNIA  
STUDENT AID  
COMMISSION

P.O. Box 419026  
Rancho Cordova  
CA 95741-9026

916.526.7590  
Toll free 888.CA.GRANT  
(888.224.7268)

[www.csac.ca.gov](http://www.csac.ca.gov)



P.O. Box 419045  
Rancho Cordova  
CA 95741-9045

916.526.7900  
Toll free 888.223.3357

[www.edfund.org](http://www.edfund.org)